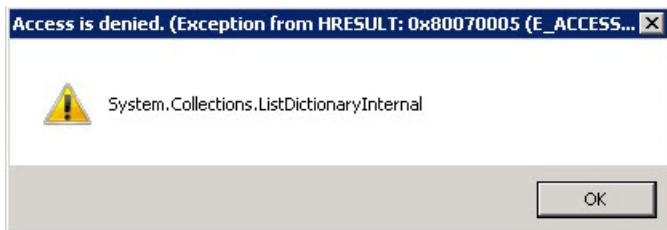


0x80070005 Access Denied

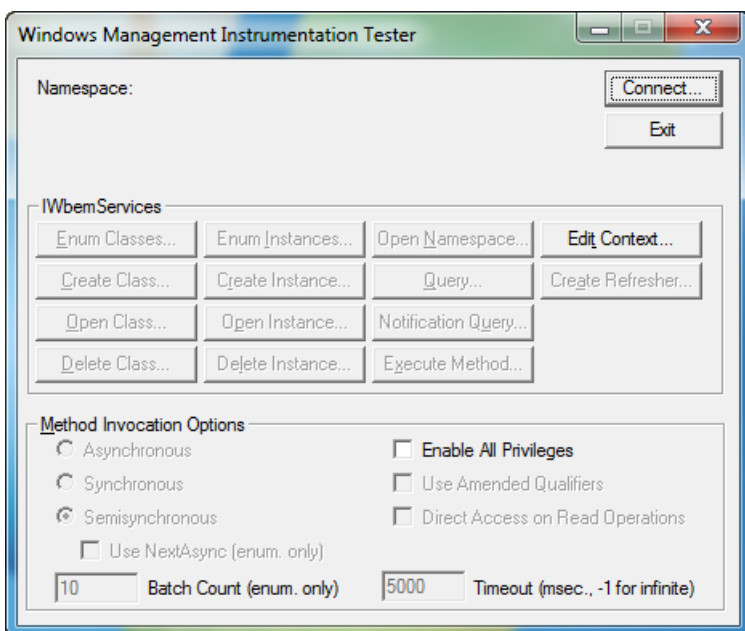
Last Modified on 04.16.26

Setup Commander is using both WMI and the SMS Provider to create applications in CM2012. When creating applications, if you do not have sufficient rights to create applications you can run into this exception message:



More information is available in this [0x80070005 Access Denied](#) forum discussion on the TechNet forums.

You can use WBEMTest to troubleshoot issues.



The [Windows Management Instrumentation Tester \(WBEMTest\)](#) is an embedded Windows utility which you can use to troubleshoot WMI issues. To start it, click Start, then Run, and then type `wbemtest.exe`. Based on the results, you can verify firewall settings and WMI rights, and change your system accordingly.
