

## System requirements

Last Modified on 04.16.26

### Connectors

#### Microsoft Configuration Manager

Microsoft Configuration Manager 2012R2 and higher are supported.

#### Microsoft Deployment Toolkit

Microsoft Deployment Toolkit (MDT) 2012, 2013 and higher are supported.

Microsoft MDT has a few requirements:

- For all deployment situations, the Windows ADK for Windows 10, version 1809 or later, is necessary. You cannot create a deployment share without it.
- User-driven installation (UDI) and zero-touch installation (ZTI) scenarios require Configuration Manager version 1810 or later.

#### Ivanti Endpoint Manager

Ivanti Endpoint Manager 2017.3 Service Update 3 and higher are supported.

#### Micro Focus ZENworks Configuration Management

ZENworks 11.4.x and higher are supported.

### Operating System

Setup Commander is supported on the following Windows operating systems:

- Microsoft Windows 10 x86 or x64
- Microsoft Windows 11 x86 or x64
- Microsoft Windows Server 2008 (R2)
- Microsoft Windows Server 2012
- Microsoft Windows Server 2016
- Microsoft Windows Server 2019
- Microsoft Windows Server 2022



You need Administrative privileges to run Setup Commander.

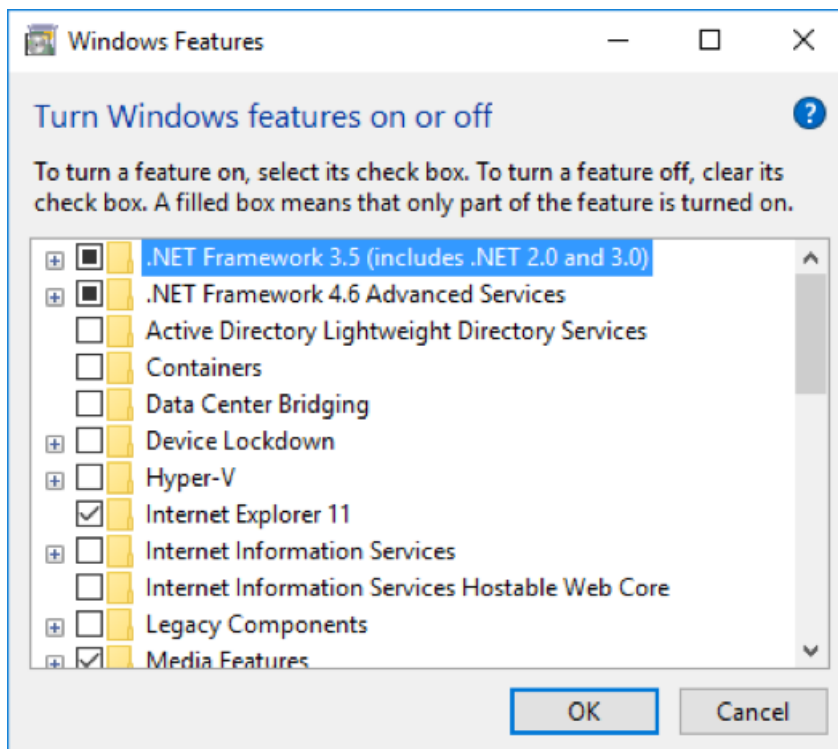
#### Microsoft .NET Framework

For Windows XP, Windows 7, Windows 8 and Windows Server 2008 both Microsoft .NET Framework 3.5 (or higher) and Microsoft .NET Framework 4 Extended should be installed.

For Windows 10 and Windows 11, Windows Server 2012 up to 2022, you must enable the .NET Framework 3.5 (includes .NET 2.0 and 3.0) Windows feature.

# Recast

.NET Framework 4.6 Advanced Services is enabled by default. For more information, see [Microsoft documentation](#).



The Setup Commander setup will verify whether you've installed/enabled the aforementioned .NET Framework.

---