

Installation

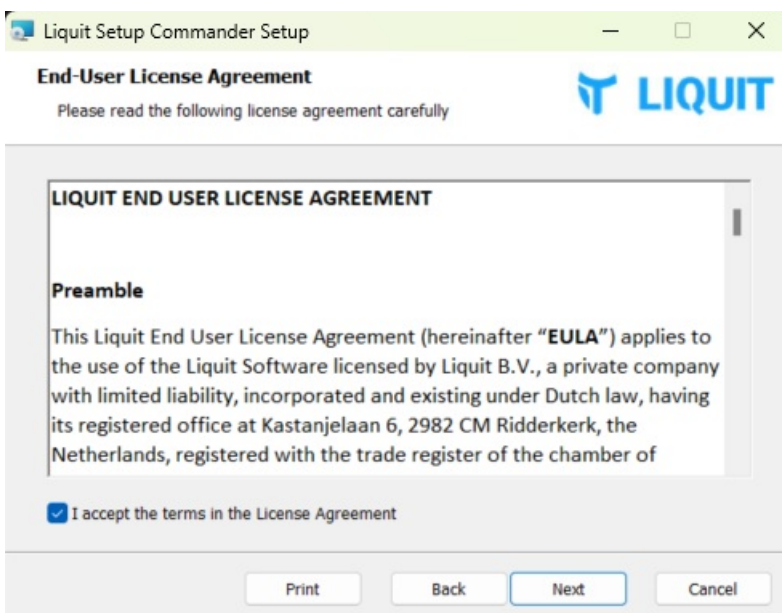
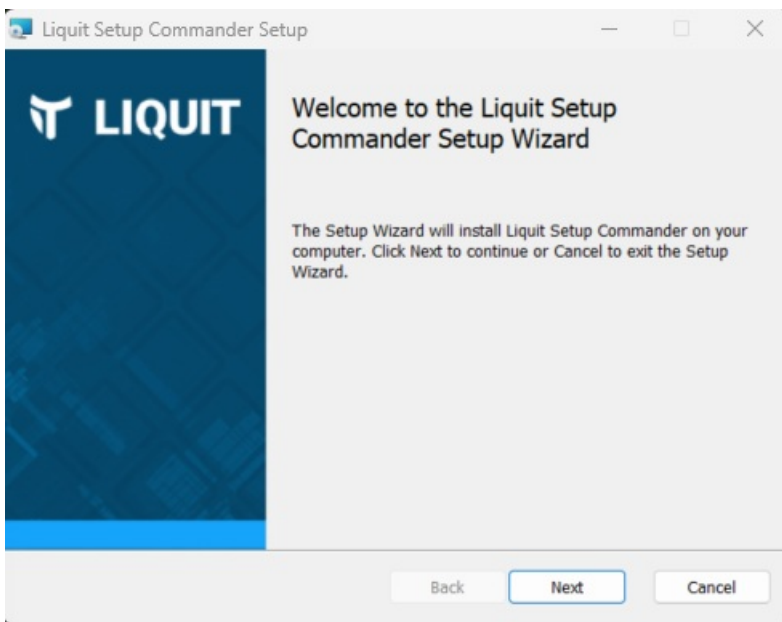
Last Modified on 04.16.26

Setup Commander is distributed as a Microsoft Installer (MSI) and this section describes a few steps required to install it.

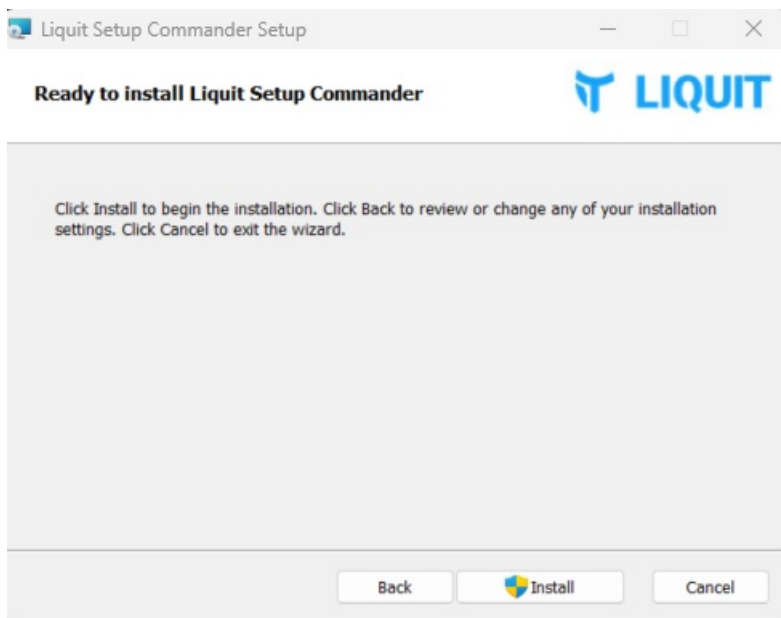
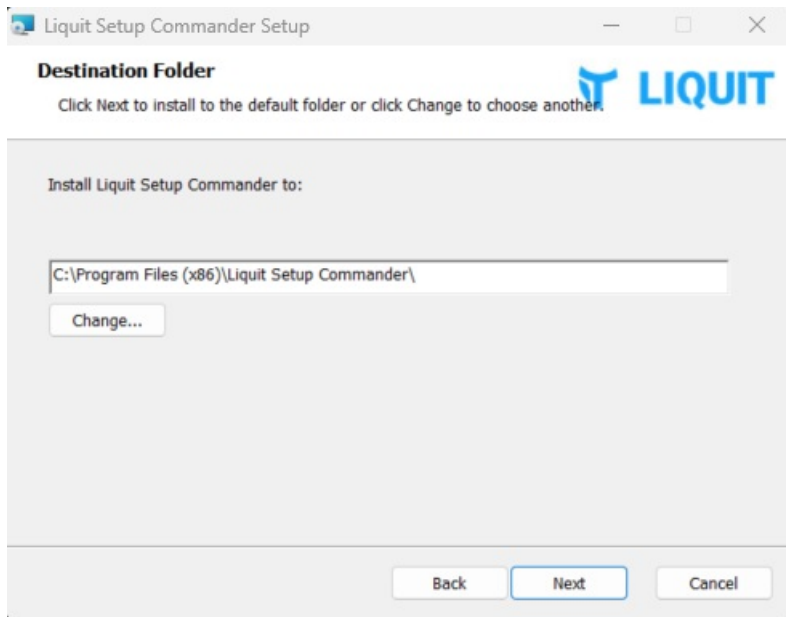
You can install the Setup Commander on multiple Windows Administrator machines in your network if needed.

How to install Setup Commander

1. Run the wizard and click Next in all windows.

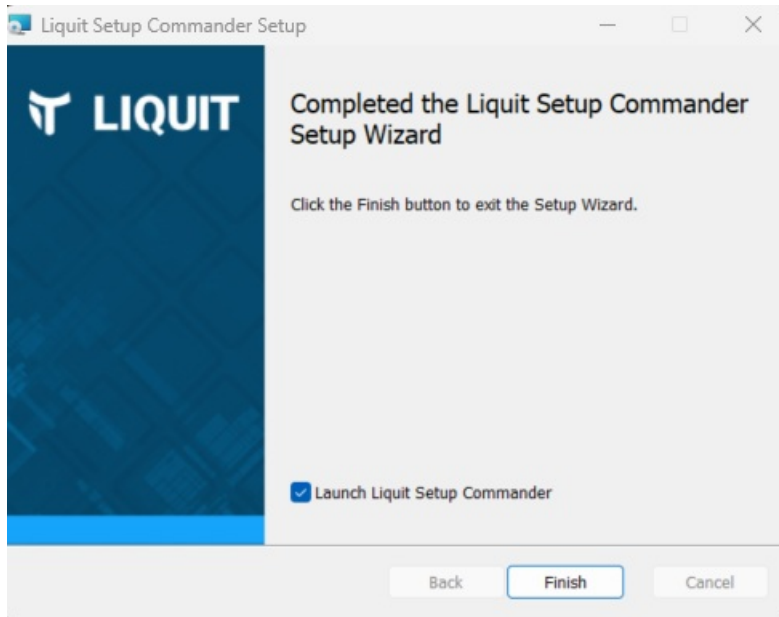


Recast



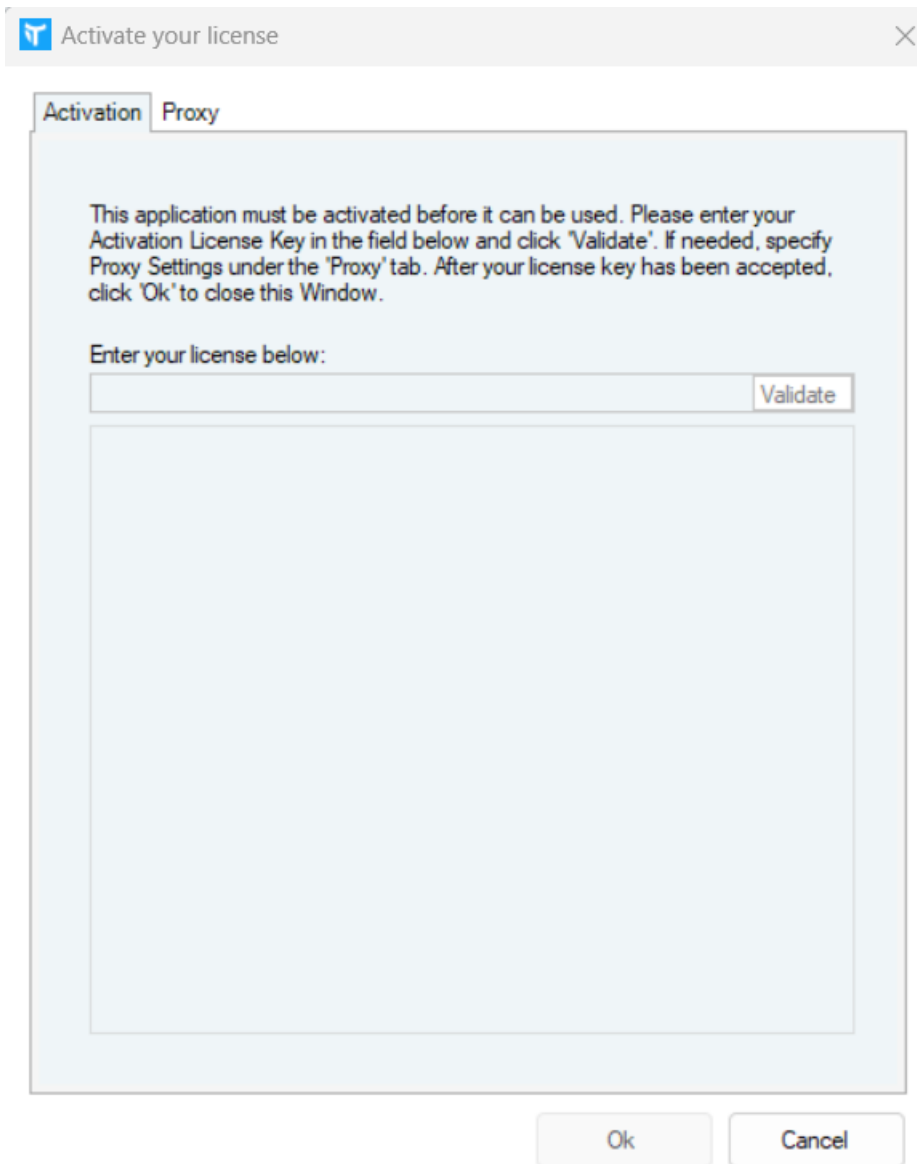
2. After the installation, Select the **Launch Setup Commander** check box and click **Finish**.

Recast

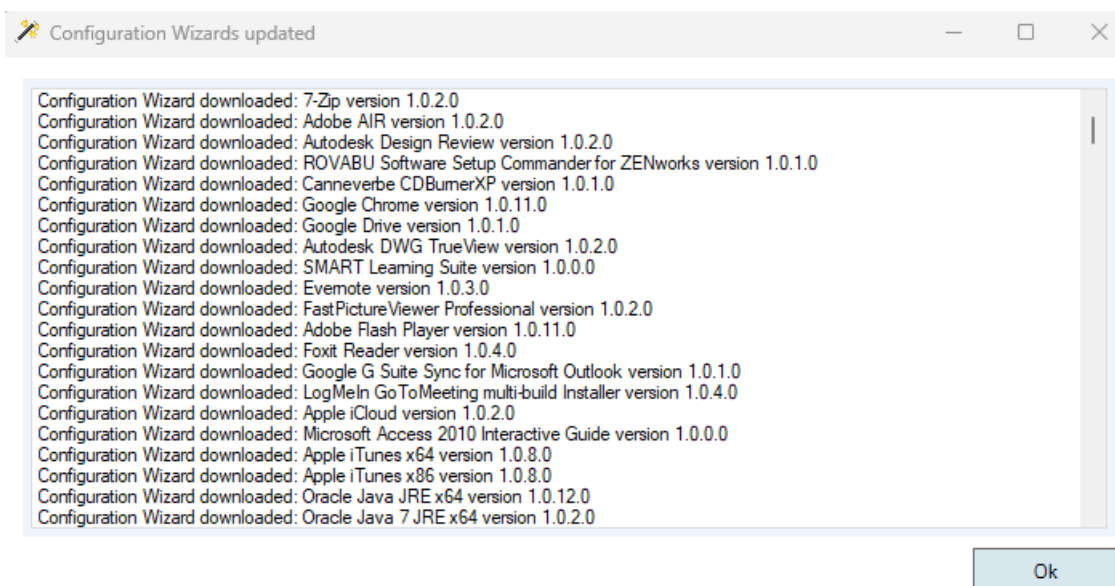


3. You will be next prompted to insert the license key.

Recast



4. A window with all the configuration wizards that have been updated will also be displayed.



Recast
