

## Configuration Wizards

Last Modified on 04.16.26

### Overview

Setup Commander supports MSIs of any vendor. By using our 'as a service' infrastructure we either provide you an already available configuration wizard for vendors like Adobe, Apple, Autodesk, Google, Microsoft, Oracle, RES and VMware or Setup Commander will auto-generate a Configuration Wizard for you instantaneously.

Our Configuration Wizards provide you with options like:

- Remove all Desktop and/or Start Menu shortcuts
- Suppress Reboots
- Disable auto-update mechanisms
- Include Licensing Information
- Include Database Settings

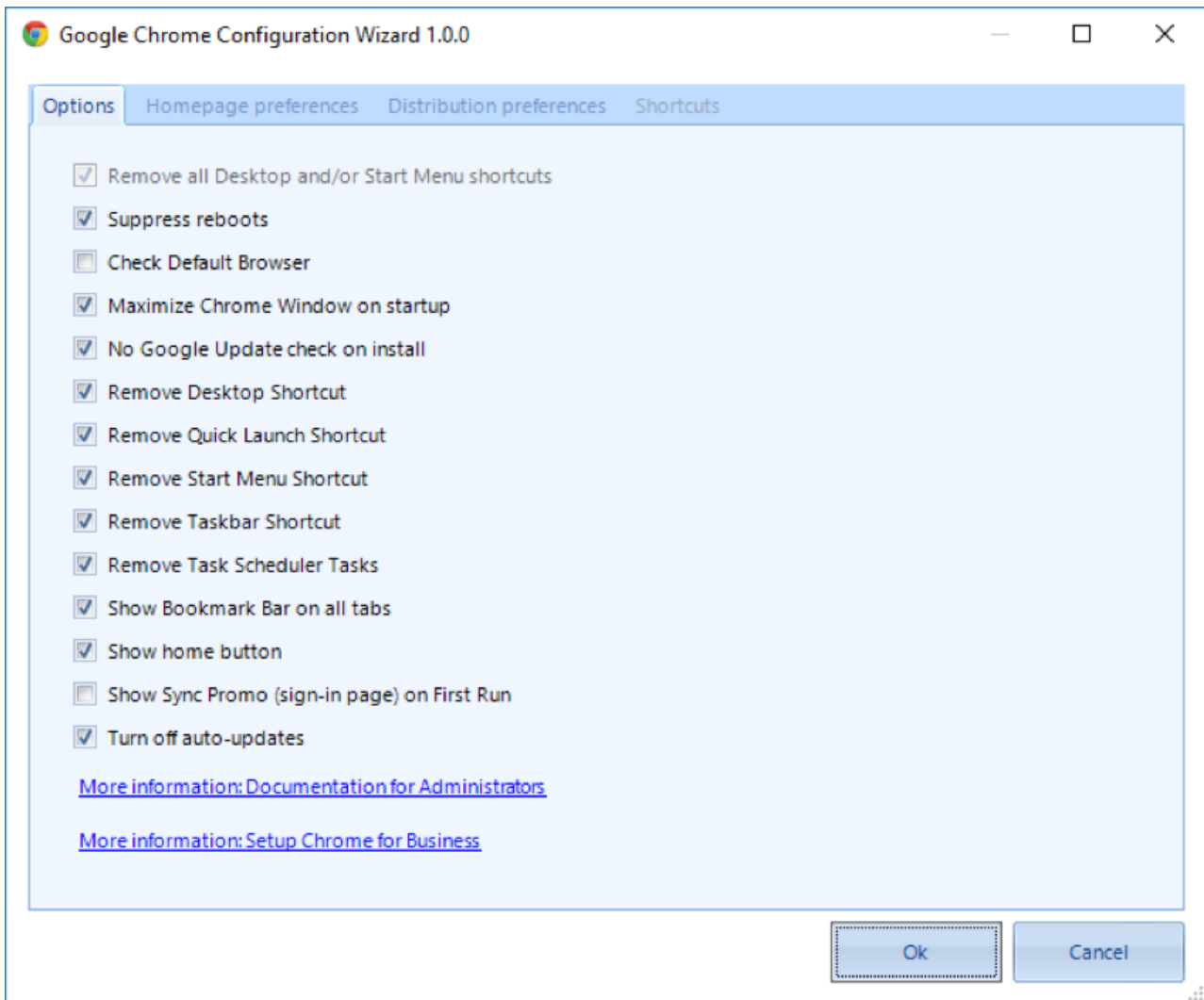
And many other typical deployment options. These options are stored in a transform file (MST) for the selected MSI.

A configuration wizard can be accessed by right-clicking on an MSI and selecting the **Generate Transform** option from the context menu.

### Example of already available configuration wizard

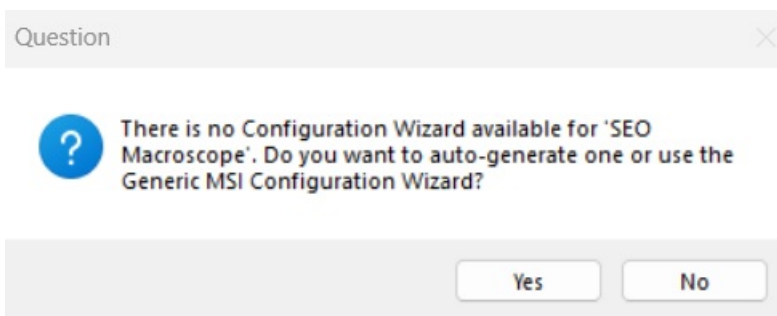
One example is our Google Chrome Configuration Wizard with which you can configure the default configuration options for Google Chrome:

# Recast



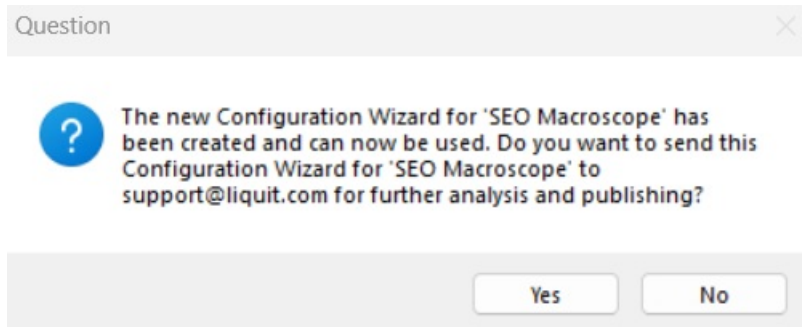
## Example of auto-generated configuration wizard

For those MSIs for which we don't have a configuration wizard, Setup Commander will auto-generate one for you instantaneously:

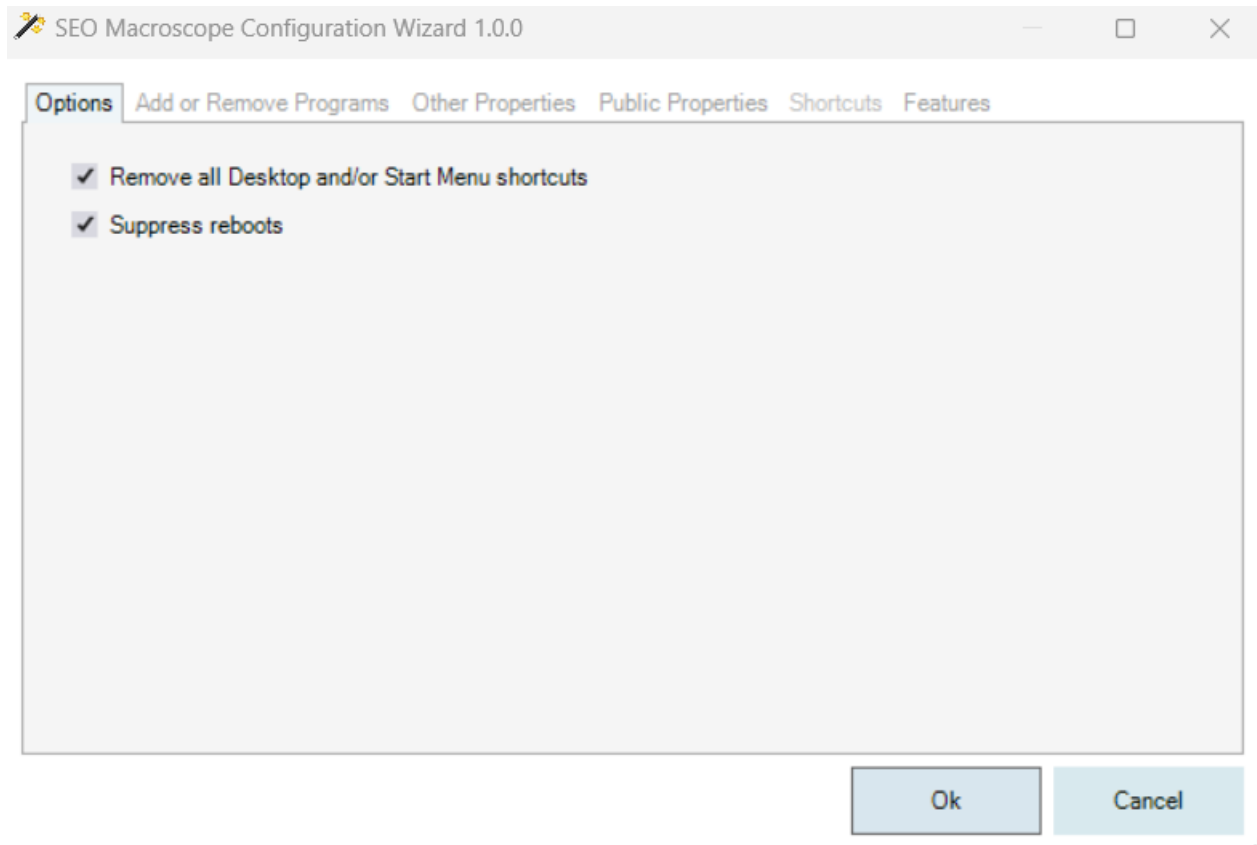


An auto-generated configuration wizard is based on best practices and can optionally be sent to our support team for further analysis, to be enhanced and for publishing purposes:

# Recast



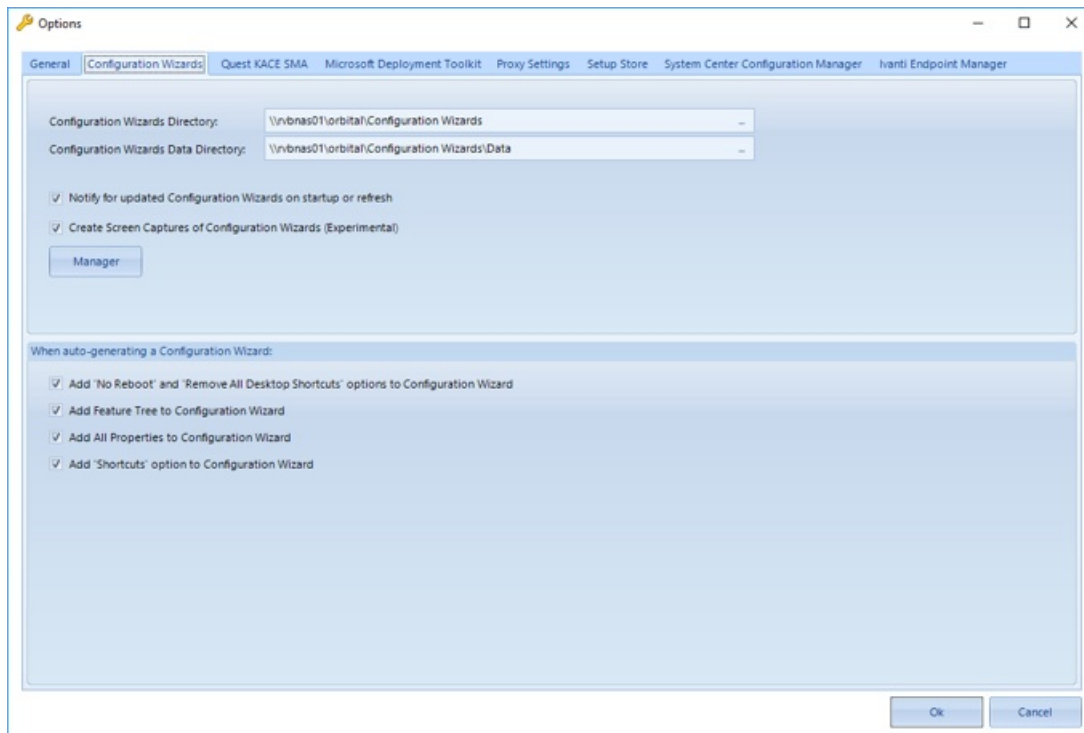
After a configuration wizard has been auto-generated, it's available immediately to transform the selected MSI:



## Configuration Wizards general settings

The general settings of configuration wizards can be accessed in Home ribbon > Configuration group > Options.

# Recast



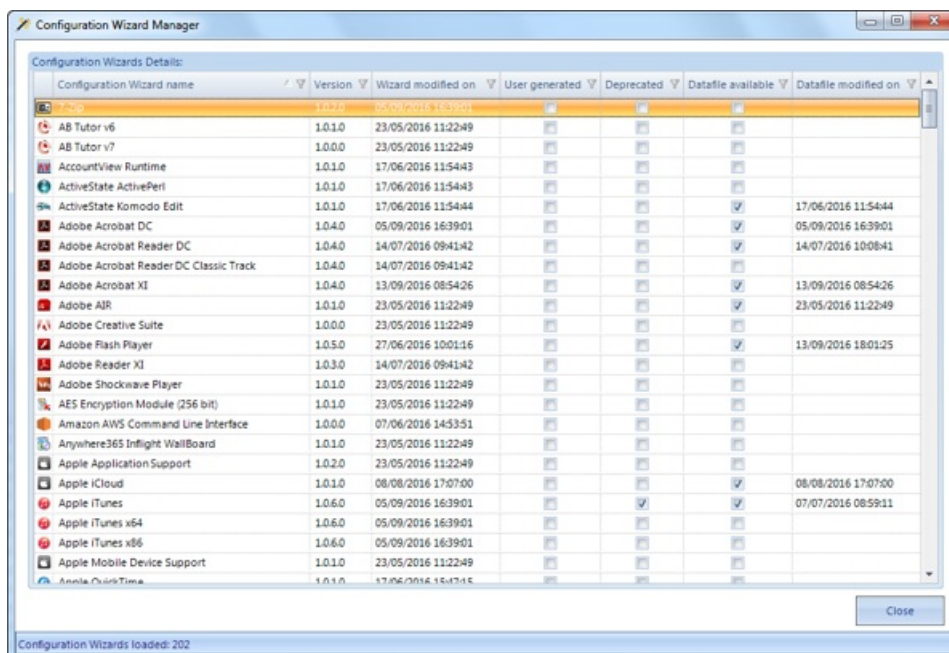
**Configuration Wizards Directory** – Represent the directory in which the .XML files of the wizards are stored.

**Configuration Wizards Data Directory** – Represent the directory in which the settings of the wizards are stored.

**Notify for updated Configuration Wizards on startup or refresh** – If enabled, a pop-up window will notify you if any configuration wizards were updated:

- on startup of Setup Commander
- whenever you use the Refresh Configuration Wizards option from the context menu of the File System (Left panel).

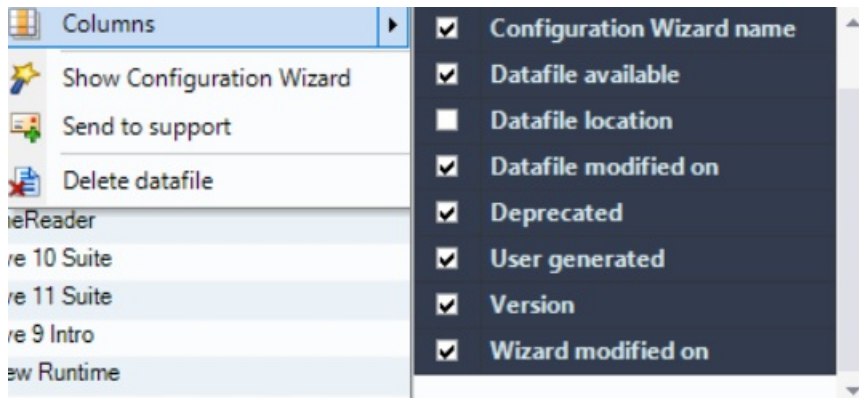
**Manager** – opens the Configuration Wizard Manager which shows all available wizards:



Double-clicking any wizard opens it, and you can configure it and save your settings.

If you right-click on a wizard, a few options are displayed like configuration of displayed columns or **Delete datafile**.

# Recast



## When auto-generating a Configuration Wizard section

The options in this section are for debugging purposes only.

---