

## VMWare Workstation Pro

Last Modified on 04.16.26

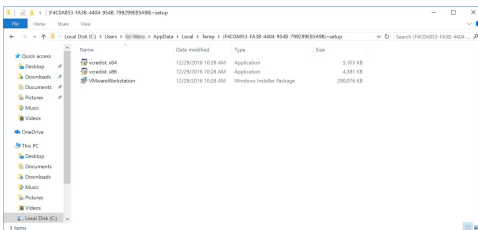
### Manual extraction of the MSI

VMware Workstation Pro is an MSI bootstrapper. We recommend you extract the MSI manually, following the steps described below:

1. On a test machine, start the VMware Workstation Pro installation.



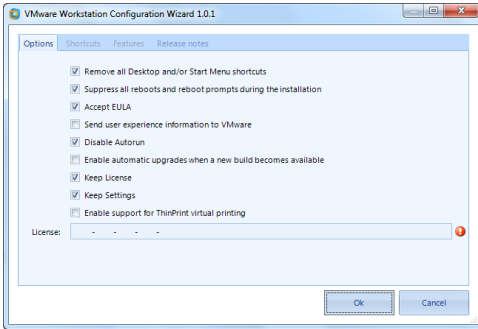
2. When the installation dialogue appears, leave it open and go to your explorer.
3. Browse to `C:\Users\[username]\AppData\Local\Temp` . Make sure you have 'show hidden files' set to on in your explorer, otherwise you won't see the AppData folder.
4. Here you will find a folder with the timestamp when you started the installation. From this folder copy the `VMwareWorkstation.msi` file to a permanent location on your filesystem.



5. Cancel the VMware Pro installation.

### Creating the application in Setup Commander

1. Open the Setup Commander and navigate to the MSI.
2. Right-click it and select **Create package**.
3. The VMware Workstation Configuration Wizard will start and you can set your options and fill in your license key.



## Application Workspace Setup Store Configuration Wizard

