

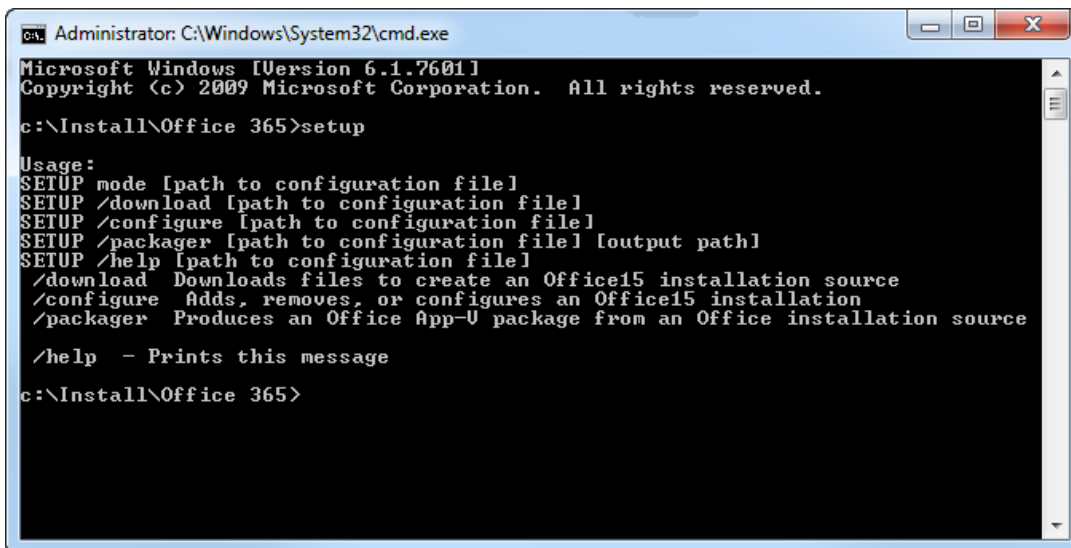
# Recast

## Microsoft Office 365

Last Modified on 04.16.26

To deploy Office 365 or Office 2016 you need the Office Deployment Tool which is available for download in the Setup Store.

The Office Deployment Tool allows the administrator to customize and manage Office 365 or Office 2016 Click-to-Run deployments. This tool will help administrators manage installation sources, product/language combinations, and deployment configuration options for Office Click-to-Run.



```
Administrator: C:\Windows\System32\cmd.exe
Microsoft Windows [Version 6.1.7601]
Copyright (c) 2009 Microsoft Corporation. All rights reserved.

c:\Install\Office 365>setup

Usage:
SETUP mode [path to configuration file]
SETUP /download [path to configuration file]
SETUP /configure [path to configuration file]
SETUP /packager [path to configuration file] [output path]
SETUP /help [path to configuration file]
/download Downloads files to create an Office15 installation source
/configure Adds, removes, or configures an Office15 installation
/packager Produces an Office App-V package from an Office installation source

/help - Prints this message

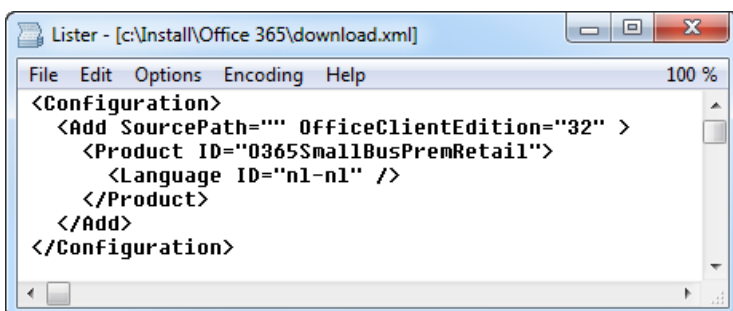
c:\Install\Office 365>
```

## Switches

The setup supports two switches which are important for deployment purposes:

- /download
- /configure

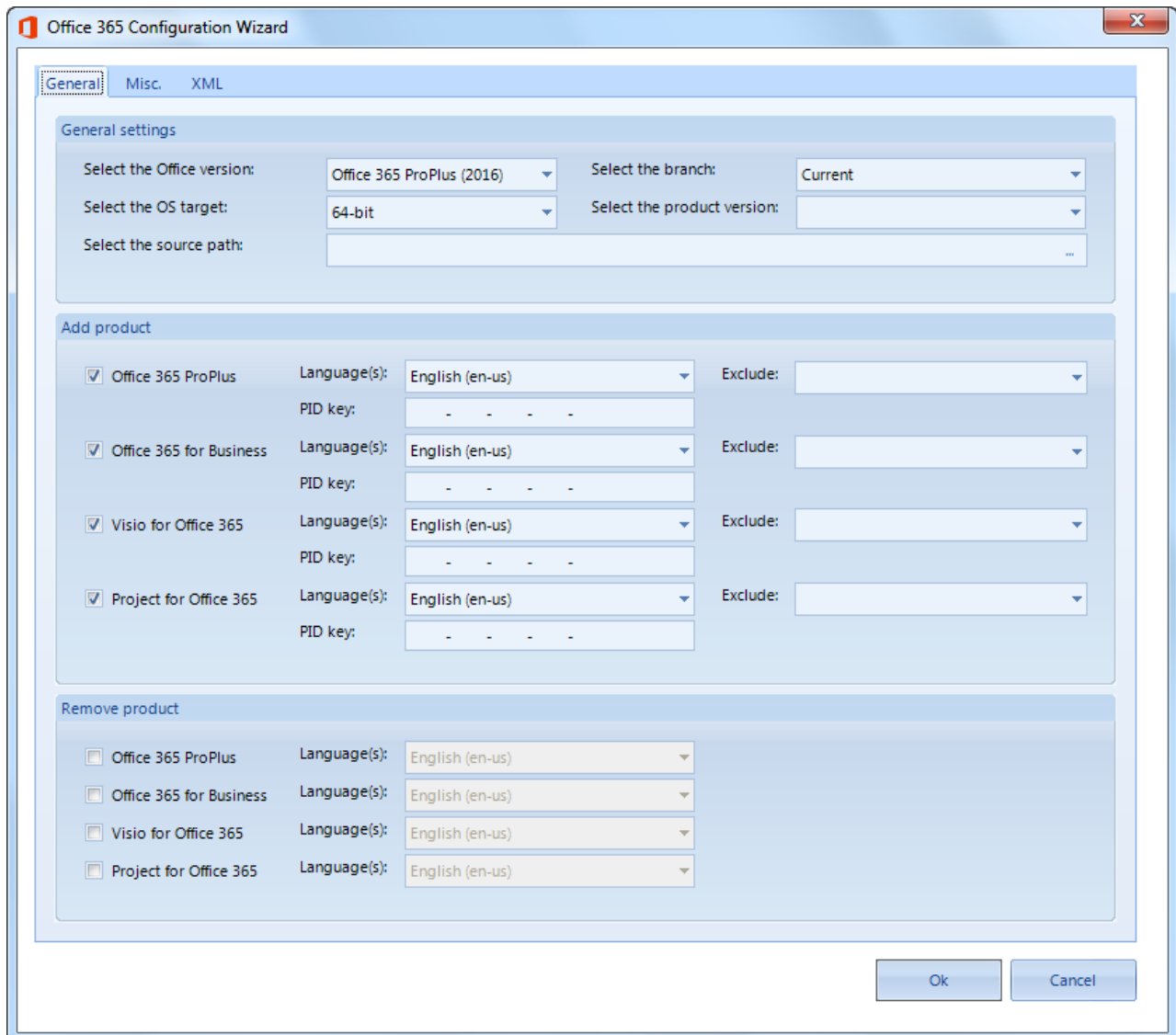
running 'setup.exe /download' requires a [path to configuration file] option as well. If you create a 'download.xml' file this could look like this:



```
Listner - [c:\Install\Office 365\download.xml]
File Edit Options Encoding Help 100 %
<Configuration>
  <Add SourcePath="" OfficeClientEdition="32" >
    <Product ID="0365SmallBusPremRetail">
      <Language ID="nl-nl" />
    </Product>
  </Add>
</Configuration>
```

## Configuration Wizard

The download and configuration xml can be the same file. We've created a Configuration Wizard to fill the XML with your required options.



**SourcePath** – If you don't provide a value, the setup files will be downloaded in an 'Office' subdirectory in the directory from which `setup.exe` has been launched.

Office 365 Configuration Wizard

General Misc. XML

**Updates**

Enable updates

Select the update path:

Select the target version:  Select the branch:

Select the deadline: 11/17/2015

**Display**

Accept EULA

Select the display level:

**Logging**

Select the logging level:

Select the logging path:

**Properties**

Auto Activate

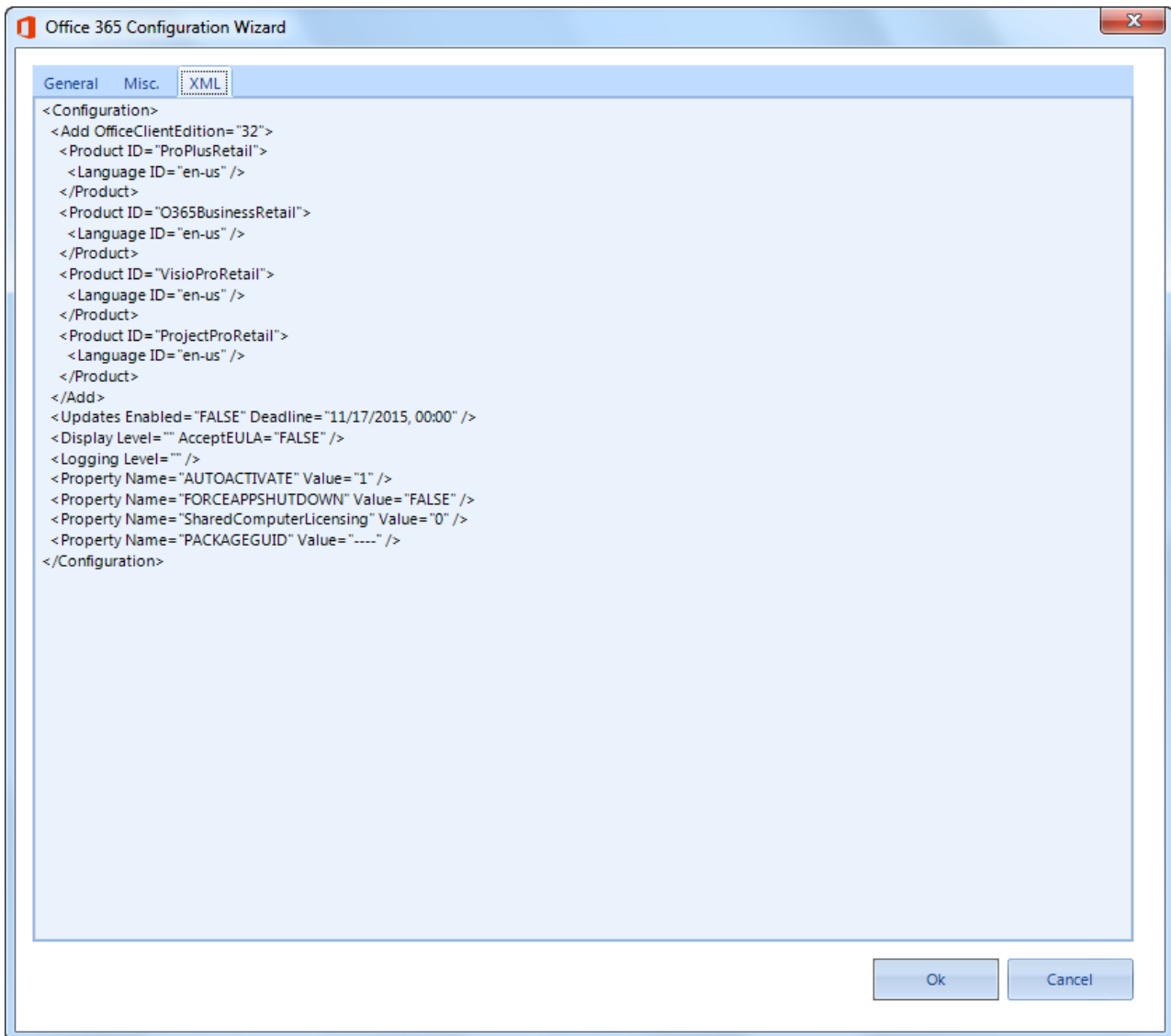
Force App Shutdown

Shared Computer Licensing

Select the Package GUID:

Ok Cancel

# Recast

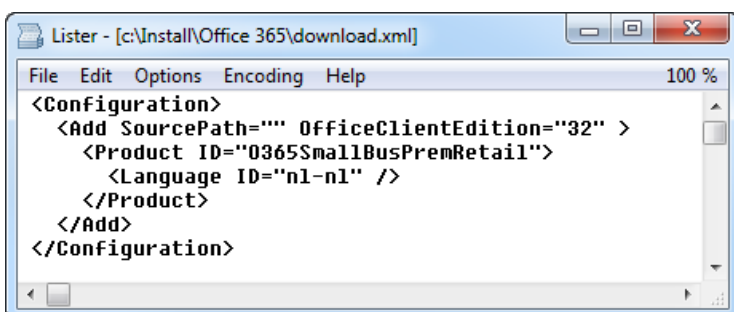


**OfficeClientEdition** – This value defines whether you want to download the setup files for an x86 (32) or x64 (64) platform. In our 'download.xml' example the 32-bit version of Office 365 is selected.

**Product ID** – The following Microsoft Office 365 product IDs are supported by the Office Deployment Tool for Click-to-Run in Office 365 deployments:

- O365ProPlusRetail
- VisioProRetail
- ProjectProRetail
- SPDRetail (SharePoint Designer)

**Language ID** – See [Microsoft documentation](#) for a list of office Language IDs available in Office 2013. In our 'download.xml' example, the Dutch language is selected.



# Recast

---