

Autodesk AutoCAD 2016

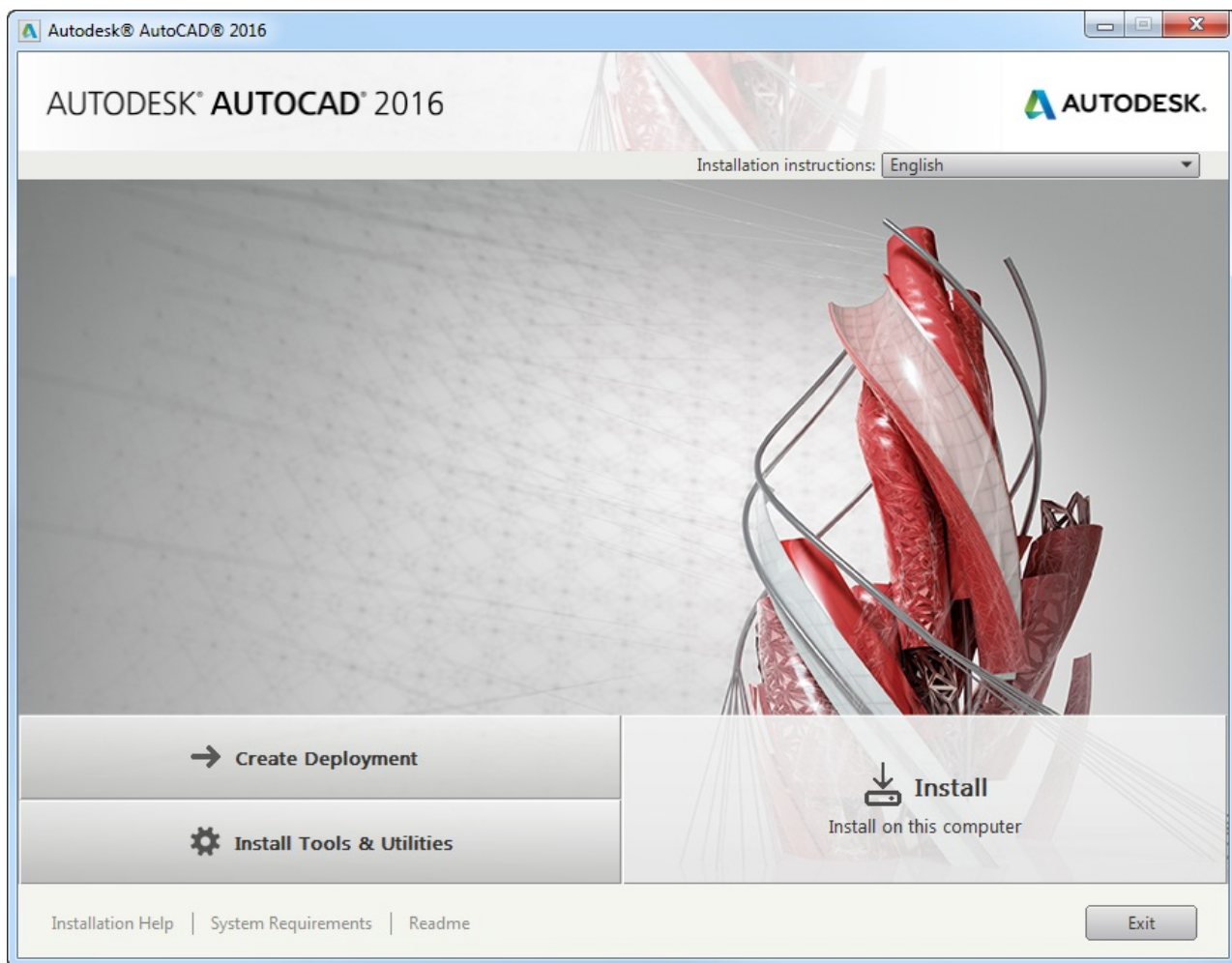
Last Modified on 04.16.26

If you want to deploy AutoCAD 2016, there are two ways to do this.

Silent installation via deployment

If you want to deploy all components of the install at once, you first have to make a deployment install.

Start the setup and follow these steps to create an administrative image.



Autodesk® AutoCAD® 2016

AUTODESK® AUTOCAD® 2016

CREATE DEPLOYMENT > CONFIGURE

Administrative Image

Deployment configuration name:

Administrative image path:

Target platform:
 32-bit 64-bit

Include only products required by this deployment configuration

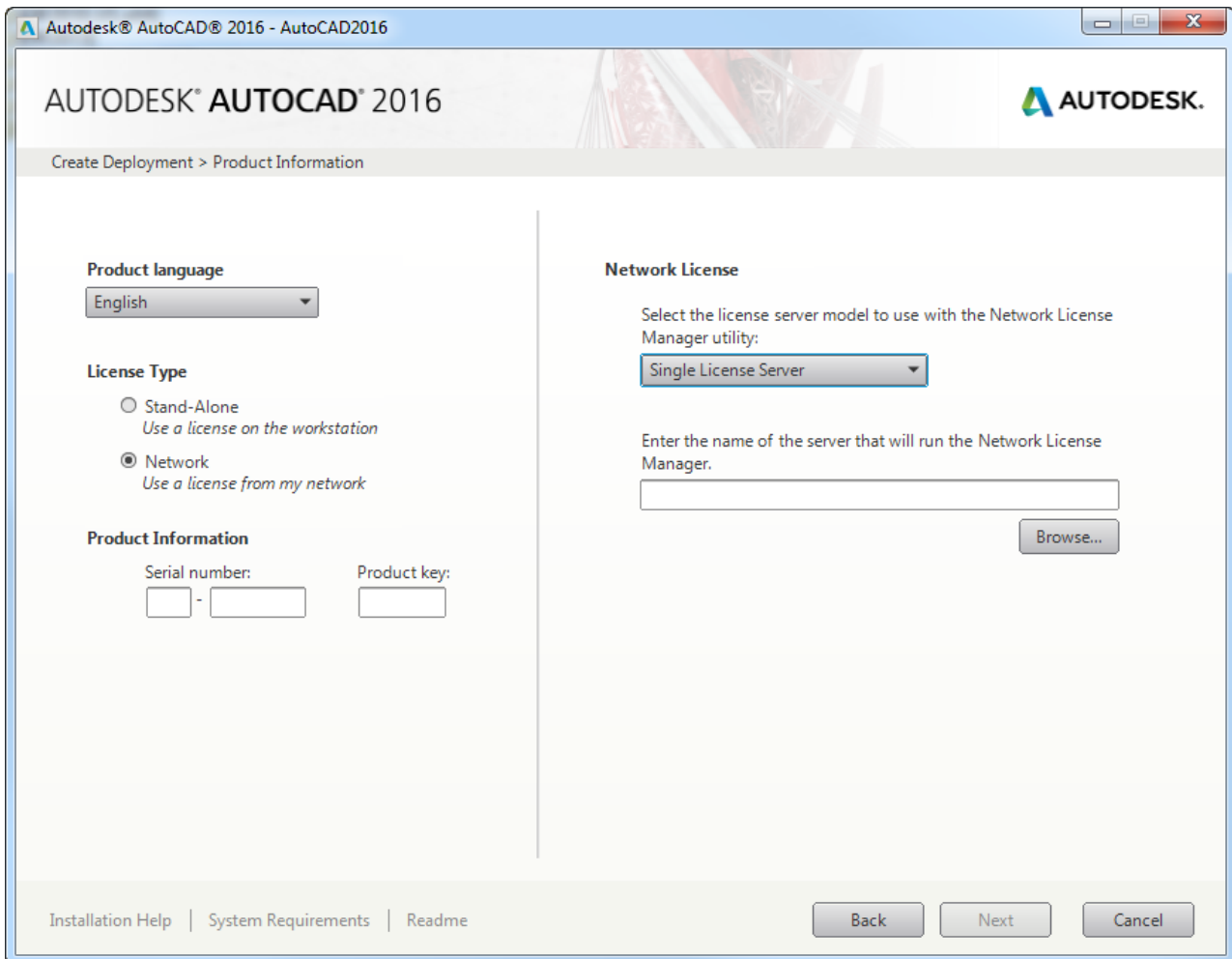
Installation Settings

Run installations in silent mode

Create a log file in each workstation's temp folder

Create a network log file:

[Installation Help](#) | [System Requirements](#) | [Readme](#)



Then you can install AutoCAD with using the following commandline:

```
.\Img\Setup.exe /W /q /I Img\AutoCAD.ini /language en-us
```

Silent installation of all prerequisites

If you want to install all the prerequisites and components separately, you have to install the following components:

.NET Framework Runtime 4.5

```
Img\3rdParty\NET\45\wcu\dotNetFramework\dotNetFx45_Full_x86_x64.exe /q /norestart
```

Microsoft Visual C++ 2008 SP1 Redistributable (x86)

```
Img\3rdParty\x86\VCRedist\2008SP1\vc redistrib_x86.exe /q
```

Microsoft Visual C++ 2010 SP1 Redistributable (x86)

```
Img\3rdParty\x86\VCRedist\2010SP1\vc redistrib_x86.exe /q /norestart /I C:\Users\  
{username}\AppData\Local\Temp\vc redistrib_x86_2010.log
```

Microsoft Visual C++ 2012 Redistributable (x86) Update 4

```
Img\3rdParty\x86\VCRedist\2012UPD4\vc_redist_x86.exe /install /quiet /norestart /log C:\Users\{username}\AppData\Local\Temp\vc_redist_x86_2012_UPD4.log
```

DirectX Runtime

```
Img\3rdParty\DirectX\DXSETUP.exe /silent
```

MSXML 6.0 Parser

```
Img\3rdParty\x86\msxml6\msxml6.msi ADSK_EULA_STATUS=#1 MUILANG=en-us SETUP_PACKAGENAME="Autodesk® AutoCAD® 2016" SETUP_PACKAGECODE={95CB8CCB-26D5-4C61-8F34-C6D922AB0D3C} SETUP_UNINSTALLKEYS=1 SETUP_ISLANGUAGEPACK=0 SETUP_PRODUCTDEPENDENCIES=";;;;" PACKAGEUPI={7CC8FA8F-4D5C-44DD-B1BF-2FB2BC3AEAAC} ADSK_SOURCE_ROOT="Img\" FILESINUSETEXT="" REBOOT=ReallySuppress ADSK_SETUP_EXE=1 /q
```

Autodesk products

Autodesk Material Library 2016

```
Img\Content\ADSKMaterials\2016\CM\MaterialLibrary2016.msi ADSK_EULA_STATUS=#1 MUILANG=en-us SETUP_PACKAGENAME="Autodesk® AutoCAD® 2016" SETUP_PACKAGECODE={95CB8CCB-26D5-4C61-8F34-C6D922AB0D3C} SETUP_UNINSTALLKEYS=1 SETUP_ISLANGUAGEPACK=0 SETUP_PRODUCTDEPENDENCIES=";;;;" PACKAGEUPI={7CC8FA8F-4D5C-44DD-B1BF-2FB2BC3AEAAC} ADSK_SOURCE_ROOT="Img\" FILESINUSETEXT="" REBOOT=ReallySuppress ADSK_SETUP_EXE=1 /q
```

Autodesk Material Library Base Resolution Image Library 2016

```
Img\Content\ADSKMaterials\2016\ILB\BaseImageLibrary2016.msi ADSK_EULA_STATUS=#1 MUILANG=en-us SETUP_PACKAGENAME="Autodesk® AutoCAD® 2016" SETUP_PACKAGECODE={95CB8CCB-26D5-4C61-8F34-C6D922AB0D3C} SETUP_UNINSTALLKEYS=1 SETUP_ISLANGUAGEPACK=0 SETUP_PRODUCTDEPENDENCIES=";;;;" PACKAGEUPI={7CC8FA8F-4D5C-44DD-B1BF-2FB2BC3AEAAC} ADSK_SOURCE_ROOT="Img\" FILESINUSETEXT="" REBOOT=ReallySuppress ADSK_SETUP_EXE=1 /q
```

Autodesk Advanced Material Library Image Library 2016

```
Img\Content\ADSKMaterials\2016\AIL\AdvancedImageLibrary2016.msi ADSK_EULA_STATUS=#1 MUILANG=en-us SETUP_PACKAGENAME="Autodesk® AutoCAD® 2016" SETUP_PACKAGECODE={95CB8CCB-26D5-4C61-8F34-C6D922AB0D3C} SETUP_UNINSTALLKEYS=1 SETUP_ISLANGUAGEPACK=0 SETUP_PRODUCTDEPENDENCIES="{29A7D6EC-63C2-42FD-8143-5812ABD2923F},;;;;" PACKAGEUPI={7CC8FA8F-4D5C-44DD-B1BF-2FB2BC3AEAAC} ADSK_SOURCE_ROOT="Img\" FILESINUSETEXT="" REBOOT=ReallySuppress ADSK_SETUP_EXE=1 /q
```

Autodesk Content Service

Recast

```
Img\x86\Tools\snap\ContentService.msi INSTALLMODE=PRIVATE AUTOSTART=0 TRANSFORMS="Img\x86\en-us\Tools\snap\ContentService.mst;" ADSK_EULA_STATUS=#1 MUILANG=en-us SETUP_PACKAGENAME="Autodesk® AutoCAD® 2016" SETUP_PACKAGECODE={95CB8CCB-26D5-4C61-8F34-C6D922AB0D3C} SETUP_UNINSTALLKEYS=1 SETUP_ISLANGUAGEPACK=0 SETUP_PRODUCTDEPENDENCIES=".NET Framework Runtime 4.5,Microsoft Visual C++ 2008 SP1 Redistributable (x86),Microsoft Visual C++ 2010 SP1 Redistributable (x86),;;;" PACKAGEUPI={7CC8FA8F-4D5C-44DD-B1BF-2FB2BC3AEAAC} ADSK_SOURCE_ROOT="Img\" FILESINUSETEXT="" REBOOT=ReallySuppress ADSK_SETUP_EXE=1 /q
```

Autodesk Content Service Language Pack

```
Img\x86\en-us\Tools\snap\ContentServiceLP.msi ADSK_EULA_STATUS=#1 MUILANG=en-us SETUP_PACKAGENAME="Autodesk® AutoCAD® 2016" SETUP_PACKAGECODE={95CB8CCB-26D5-4C61-8F34-C6D922AB0D3C} SETUP_UNINSTALLKEYS=0 SETUP_ISLANGUAGEPACK=1 SETUP_PRODUCTDEPENDENCIES=";;;" PACKAGEUPI={7CC8FA8F-4D5C-44DD-B1BF-2FB2BC3AEAAC} ADSK_SOURCE_ROOT="Img\" FILESINUSETEXT="" REBOOT=ReallySuppress ADSK_SETUP_EXE=1 /q
```

AutoCAD 2016

```
Img\x86\acad\acad.msi TRANSFORMS="Img\x86\acad\acad-AutoCAD.mst" ADSK_EULA_STATUS=#1 ADSK_SOURCE_ROOT="Img\" INSTALLDIR="C:\Program Files\Autodesk\AutoCAD 2016\" FILESINUSETEXT="" REBOOT=ReallySuppress ADSK_SETUP_EXE=1 /q
```

AutoCAD 2016 Language Pack – English

```
Img\x86\en-us\acad\AcadLP\AcadLP.msi TRANSFORMS="Img\x86\en-us\acad\AcadLP\AcadLP-AutoCAD.mst" ADSK_EULA_STATUS=#1 ADSK_SOURCE_ROOT="Img\" INSTALLDIR="C:\Program Files\Autodesk\AutoCAD 2016\" FILESINUSETEXT="" REBOOT=ReallySuppress ADSK_SETUP_EXE=1 /q
```

ACA & MEP 2016 Object Enabler

```
Img\x86\ACAOE\AcaOE.msi TRANSFORMS="Img\x86\ACAOE\AcaOE-AutoCAD.mst" ADSK_EULA_STATUS=#1 ADSK_SOURCE_ROOT="Img\" INSTALLDIR="C:\Program Files\Autodesk\AutoCAD 2016\" FILESINUSETEXT="" REBOOT=ReallySuppress ADSK_SETUP_EXE=1 /q
```

ACAD Private

```
Img\x86\ACADPRIVATE\AcadPrivate.msi TRANSFORMS="Img\x86\ACADPRIVATE\AcadPrivate-AutoCAD.mst" ADSK_EULA_STATUS=#1 ADSK_SOURCE_ROOT="Img\" INSTALLDIR="C:\Program Files\Autodesk\AutoCAD 2016\" FILESINUSETEXT="" REBOOT=ReallySuppress ADSK_SETUP_EXE=1 /q
```

AutoCAD 2016 – English

```
Img\x86\en-us\acad\AcadPS\AcadPS.msi TRANSFORMS="Img\x86\en-us\acad\AcadPS\AcadPS-AutoCAD.mst" ADSK_EULA_STATUS=#1 ADSK_SOURCE_ROOT="Img\" INSTALLDIR="C:\Program Files\Autodesk\AutoCAD 2016\" FILESINUSETEXT="" REBOOT=ReallySuppress ADSK_SETUP_EXE=1 /q
```

SketchUp Import 2016

Recast

```
Img\x86\ACADExtApps\AutodeskImportSkp.msi ADLANGUAGE=en-us ADSK_EULA_STATUS=#1 MUILANG=en-us SETUP_PACKAGENAME="Autodesk® AutoCAD® 2016" SETUP_PACKAGECODE={95CB8CCB-26D5-4C61-8F34-C6D922AB0D3C} SETUP_UNINSTALLKEYS=1 SETUP_ISLANGUAGEPACK=0 SETUP_PRODUCTDEPENDENCIES=";;;;" PACKAGEUPI={7C8FA8F-4D5C-44DD-B1BF-2FB2BC3AEAAAC} ADSK_SOURCE_ROOT="Img\" FILESINUSETEXT="" REBOOT=ReallySuppress ADSK_SETUP_EXE=1 /q
```

Further reading

[Deploying AutoCAD 2020 using Liquit Workspace \(Liquit Blog\)](#)

[Tips and tricks to further customize the deployment using the AutoCAD2020.ini file \(Liquit Blog\)](#)

[Starting AutoCAD with different profiles \(Liquit Blog\)](#)

[AutoCAD support](#)

[AutoCAD Installation for administrators webpage](#)

[Autodesk Product Documentation](#)
