

## Adobe Creative Cloud Packager

Last Modified on 04.16.26

### How to create an Adobe app using Adobe Creative Cloud Packager and Setup Commander for versions prior to 2019

Adobe apps and updates for versions of Adobe Creative Cloud earlier than 2019 are deployed via [Creative Cloud Packager](#).

With the Creative Cloud Packager, you create Windows and/or Mac OS packages (MSI or PKG files) and then with MDT you deploy them to client machines in your organization.

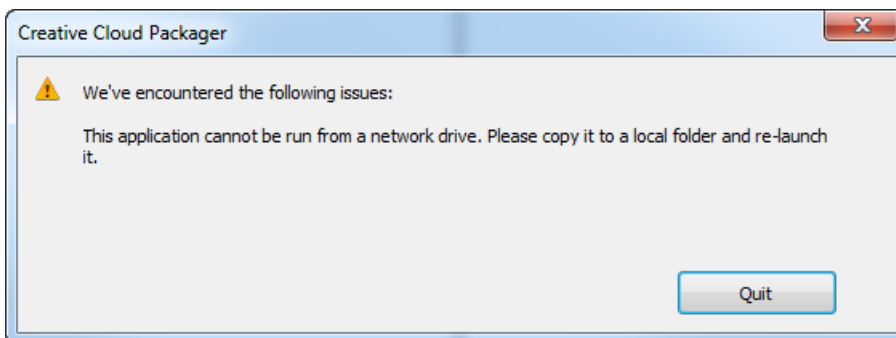
### Creative Cloud Packager Download

If you are a Creative Cloud for Teams customer, download the Adobe Creative Cloud Packager from the Team Admin Portal in Adobe Creative Cloud.

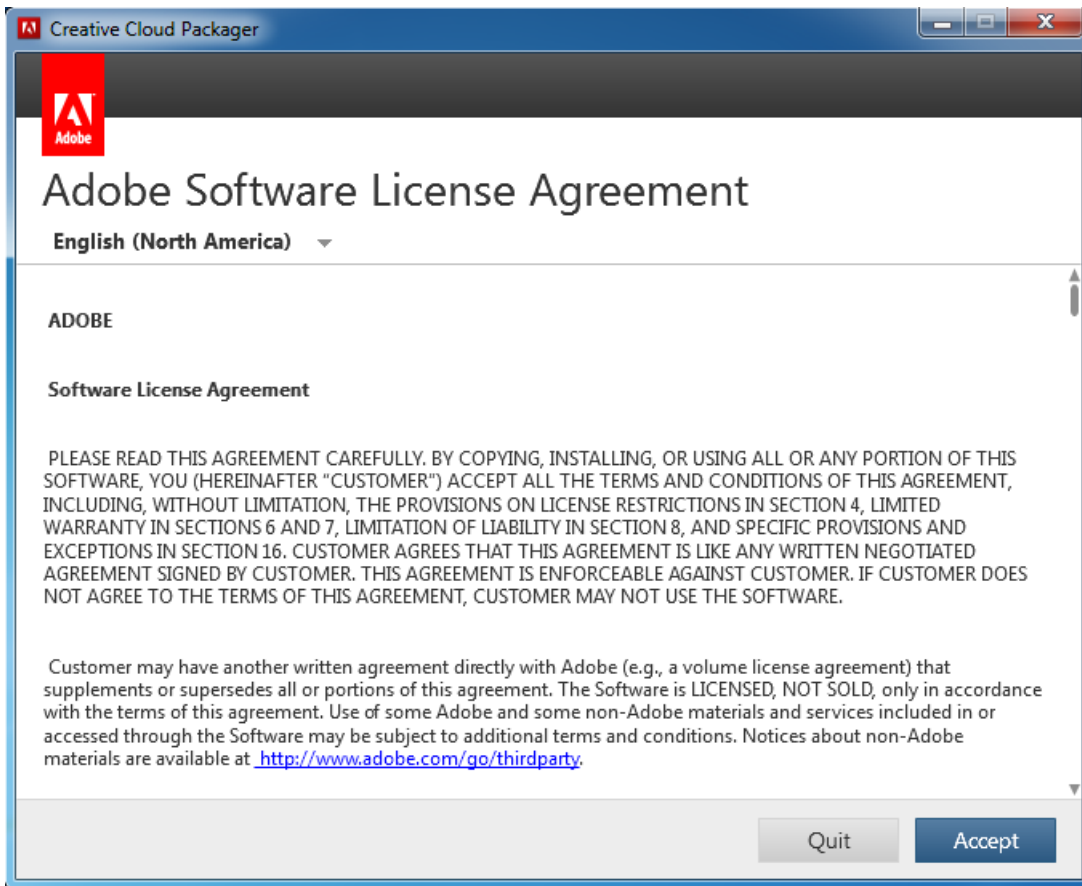
If you are a Creative Cloud for Enterprise customer, download the Adobe Creative Cloud Packager from the Adobe Licensing Website (LWS) or Enterprise Dashboard. You also get your enterprise license key from the LWS.

### Creative Cloud Packager Installation

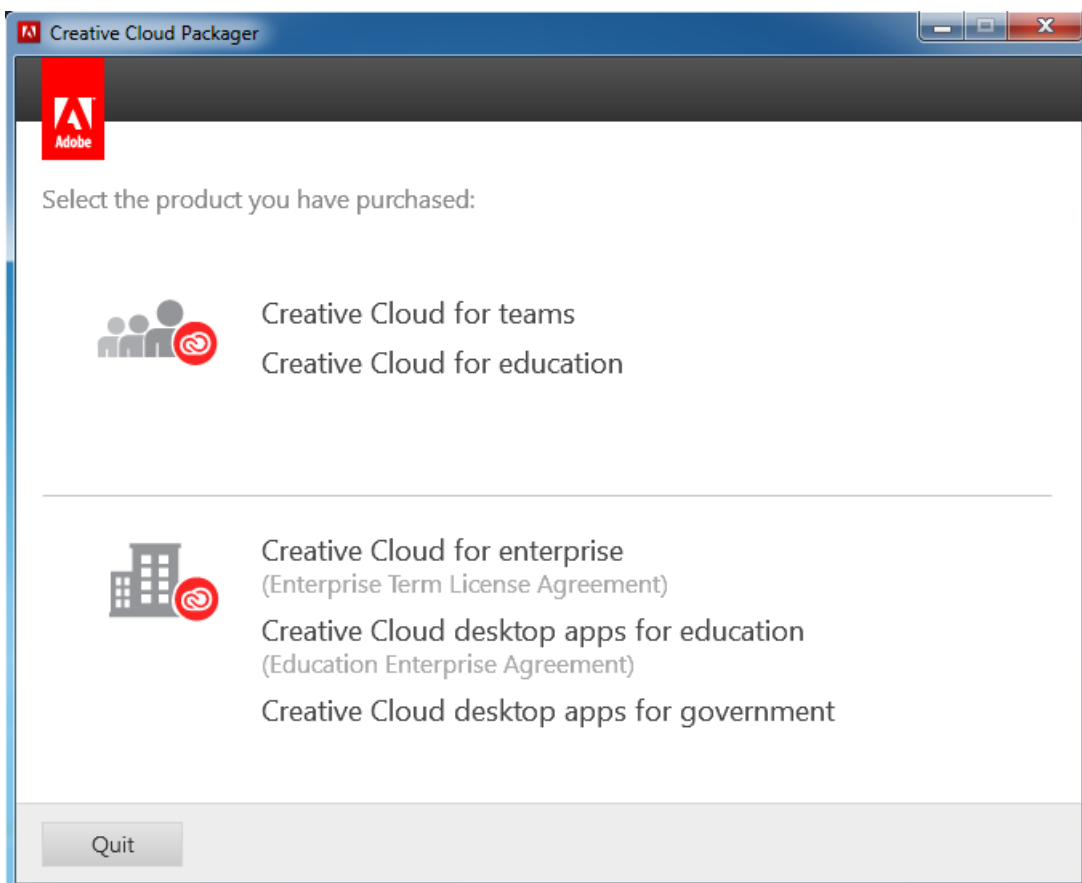
1. Start the Creative Cloud Packager (as Administrator) from a local drive, since it can't be run from a network drive.



2. Accept the EULA.

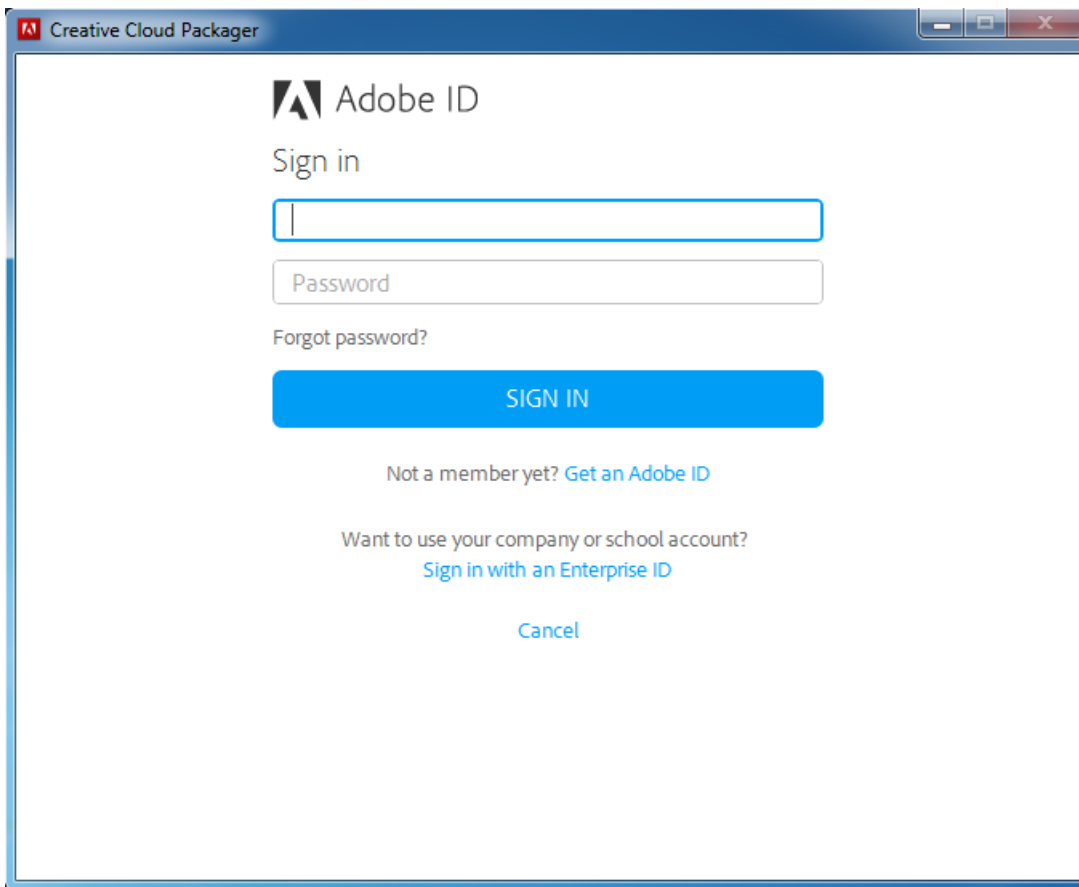


3. Select which product you've purchased. Dutch SLBdiensten customers who've purchased an Adobe Fixed Price contract must select Creative Cloud desktop apps for education.



# Recast

4. Login with your Adobe ID and click **Next**.

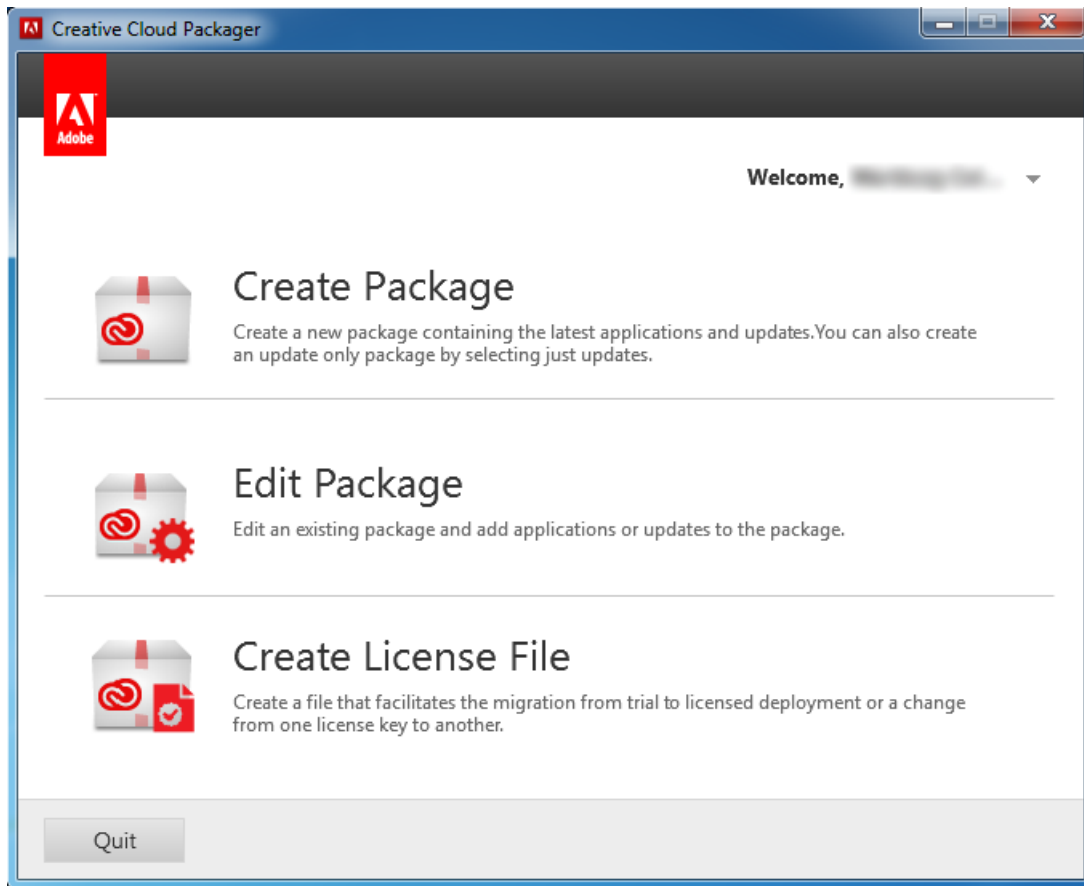


The screenshot shows a window titled "Creative Cloud Packager" with the Adobe ID sign-in interface. The window has a blue header bar with the Adobe logo and the text "Creative Cloud Packager". The main content area is white and contains the following elements:

- The Adobe logo and the text "Adobe ID".
- The text "Sign in" above a text input field.
- A "Password" label above a password input field.
- The text "Forgot password?" below the password field.
- A large blue button labeled "SIGN IN".
- The text "Not a member yet? [Get an Adobe ID](#)".
- The text "Want to use your company or school account?" above the text "[Sign in with an Enterprise ID](#)".
- The text "Cancel" at the bottom.

5. Select **Create Package** and click **Next**.

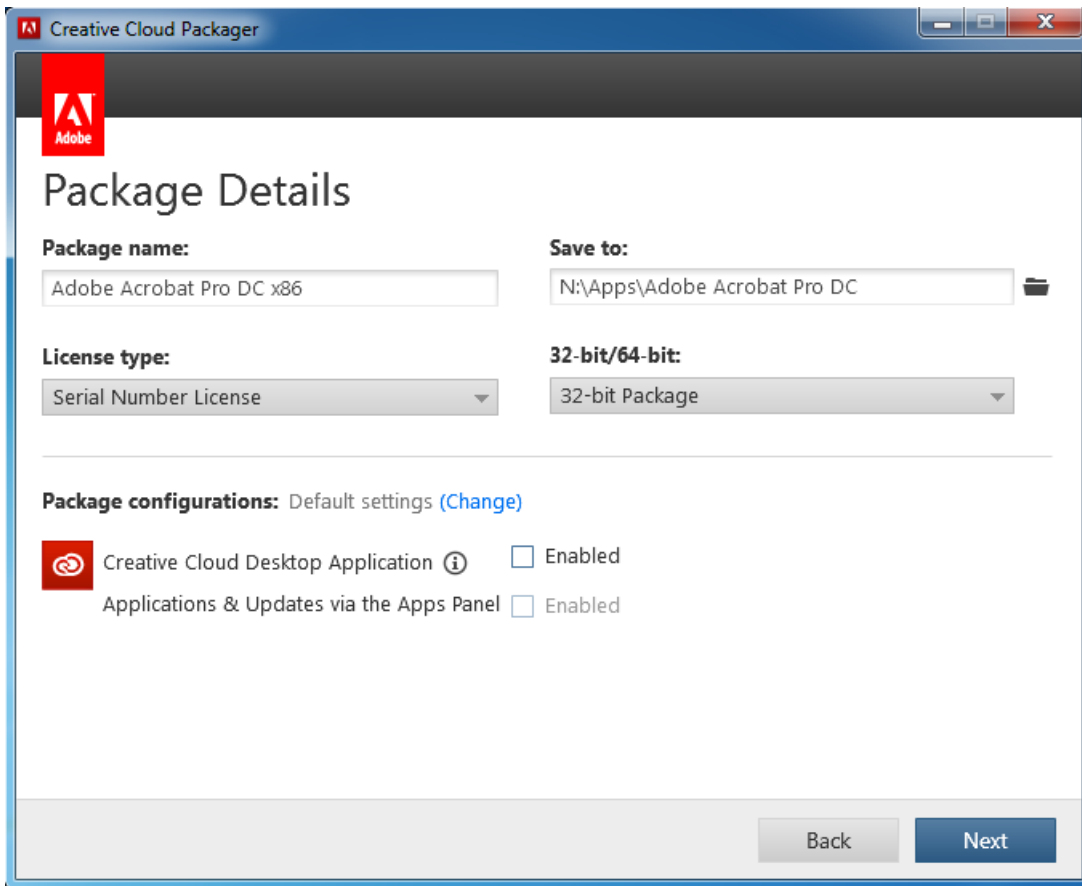
# Recast



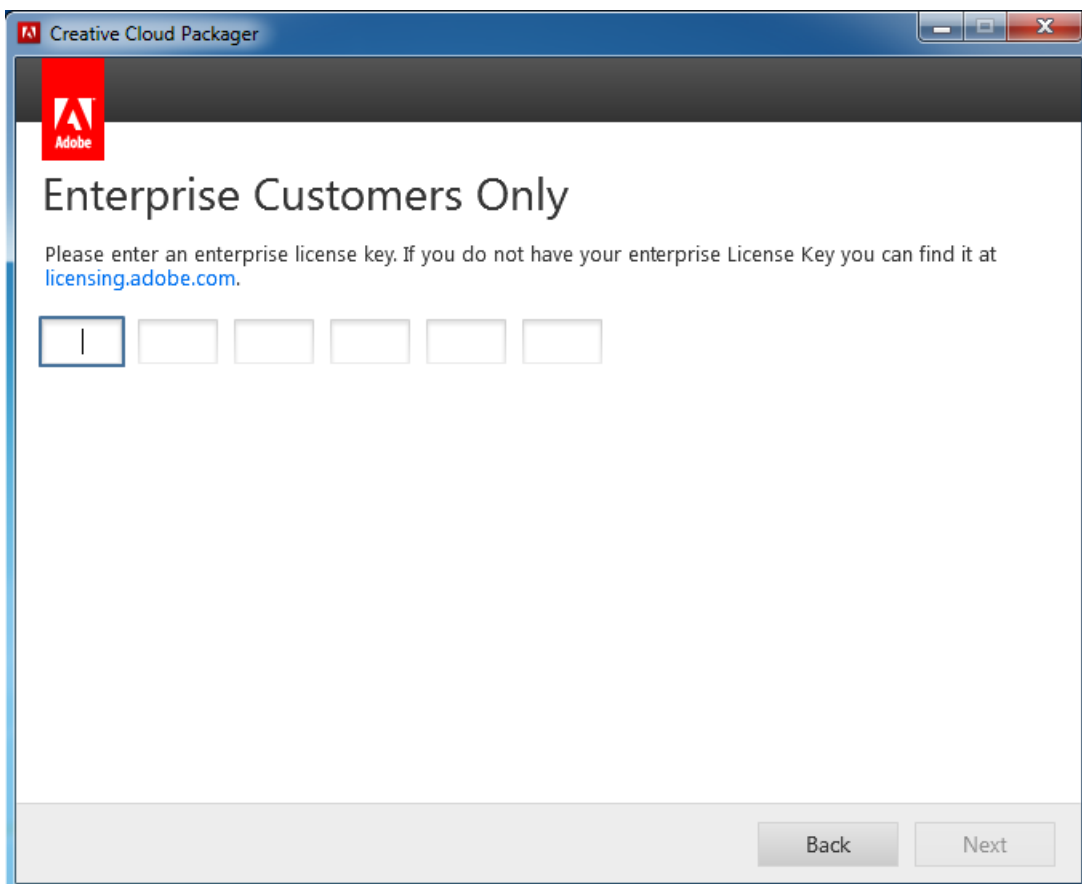
6. In the **Package Details** screen:

- Provide a valid package name and a save path.
- In **License type**, enterprise customers have to select *Serial Number License*
- Disable the **Creative Cloud Desktop Application** and **Applications & Updates via the Apps Panel** options.
- Click **Next**.

# Recast

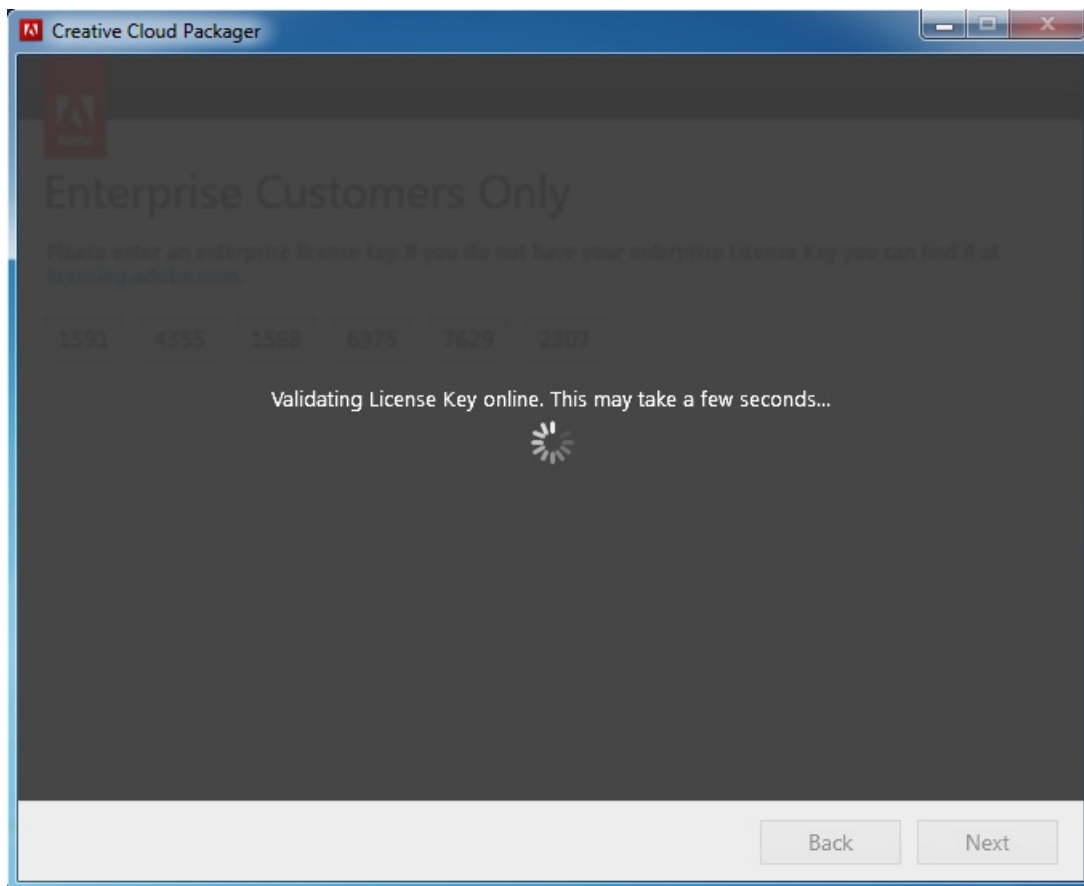


7. In the next window that opens, provide your enterprise license key and click **Next**.



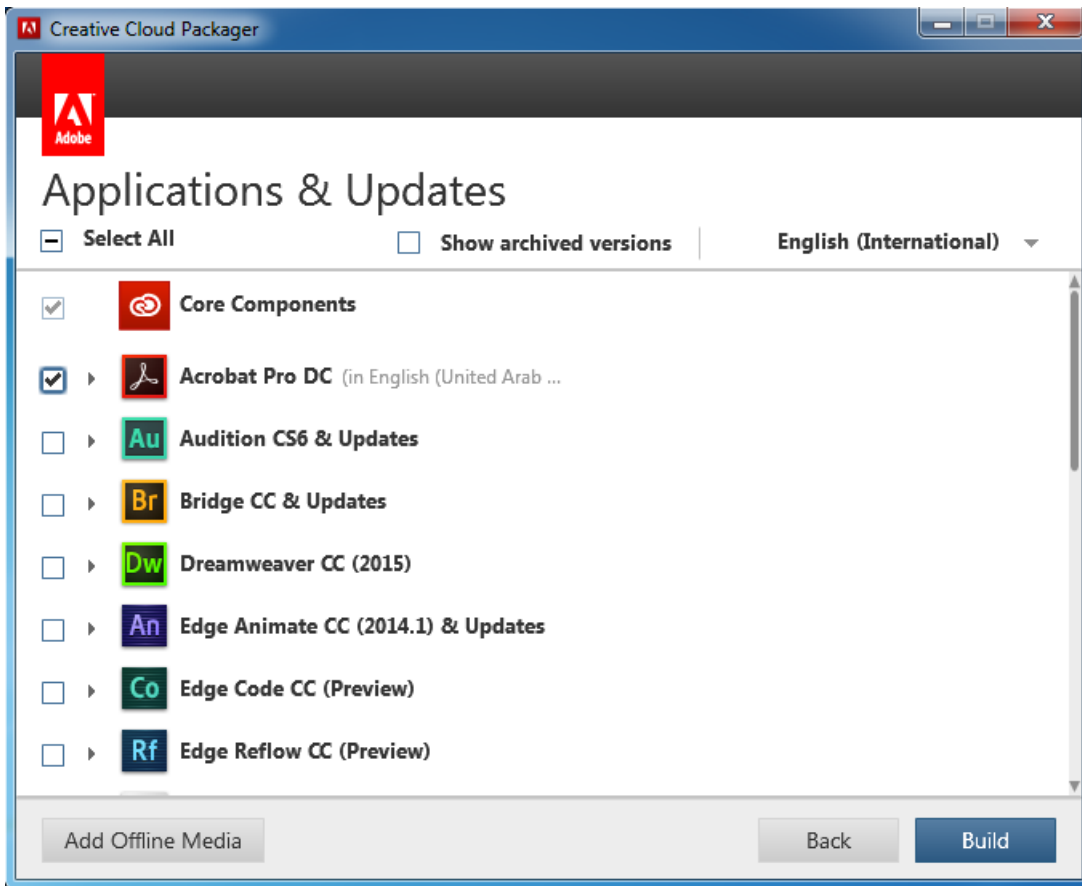
# Recast

Your enterprise license key will be validated:

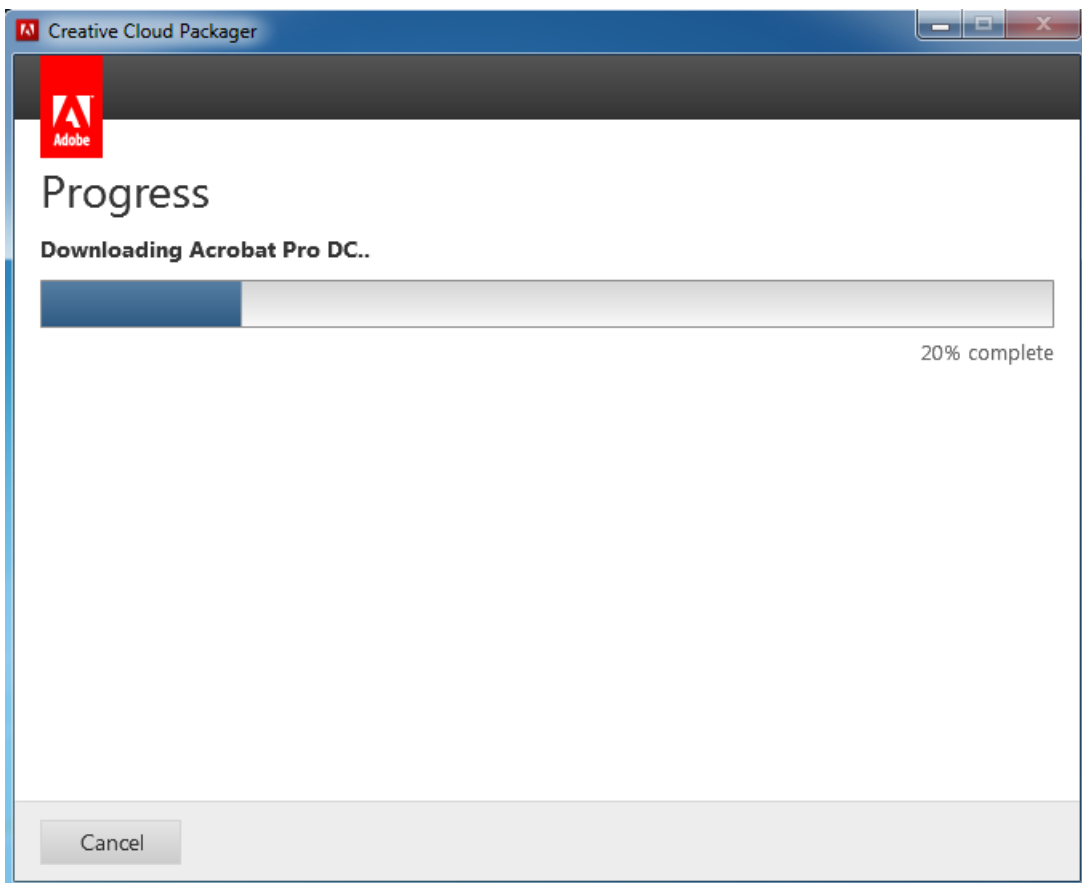


8. Select your language and the components and applications you like to include in your package. In this example, we choose **Adobe Acrobat DC** only. After you finish your selection, click **Build**.

# Recast

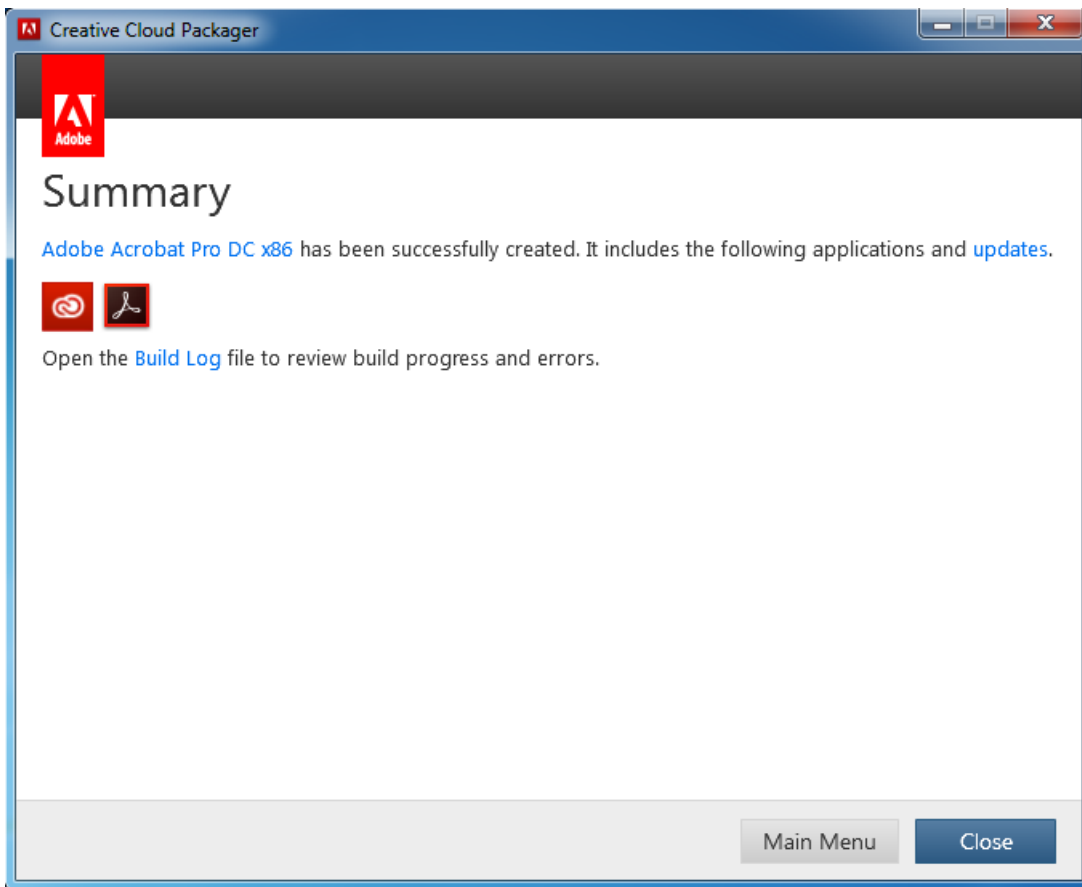


The Creative Cloud Packager will download the selected components and applications from the Adobe website and create the package.



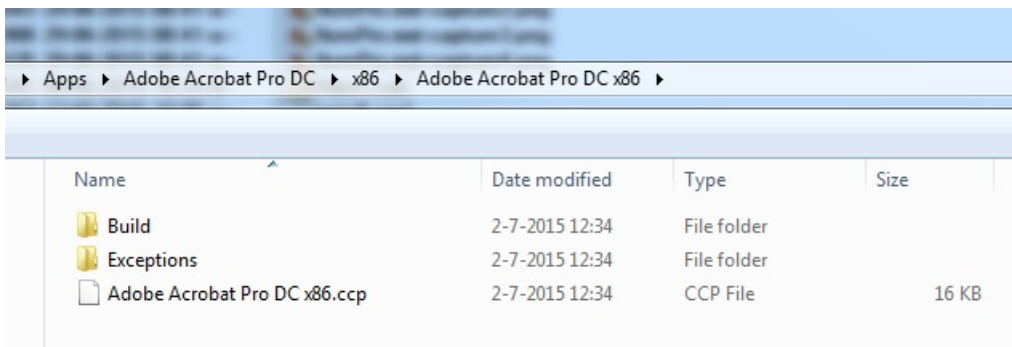
# Recast

9. In the Summary screen, click Close.



## Create an application using Setup Commander

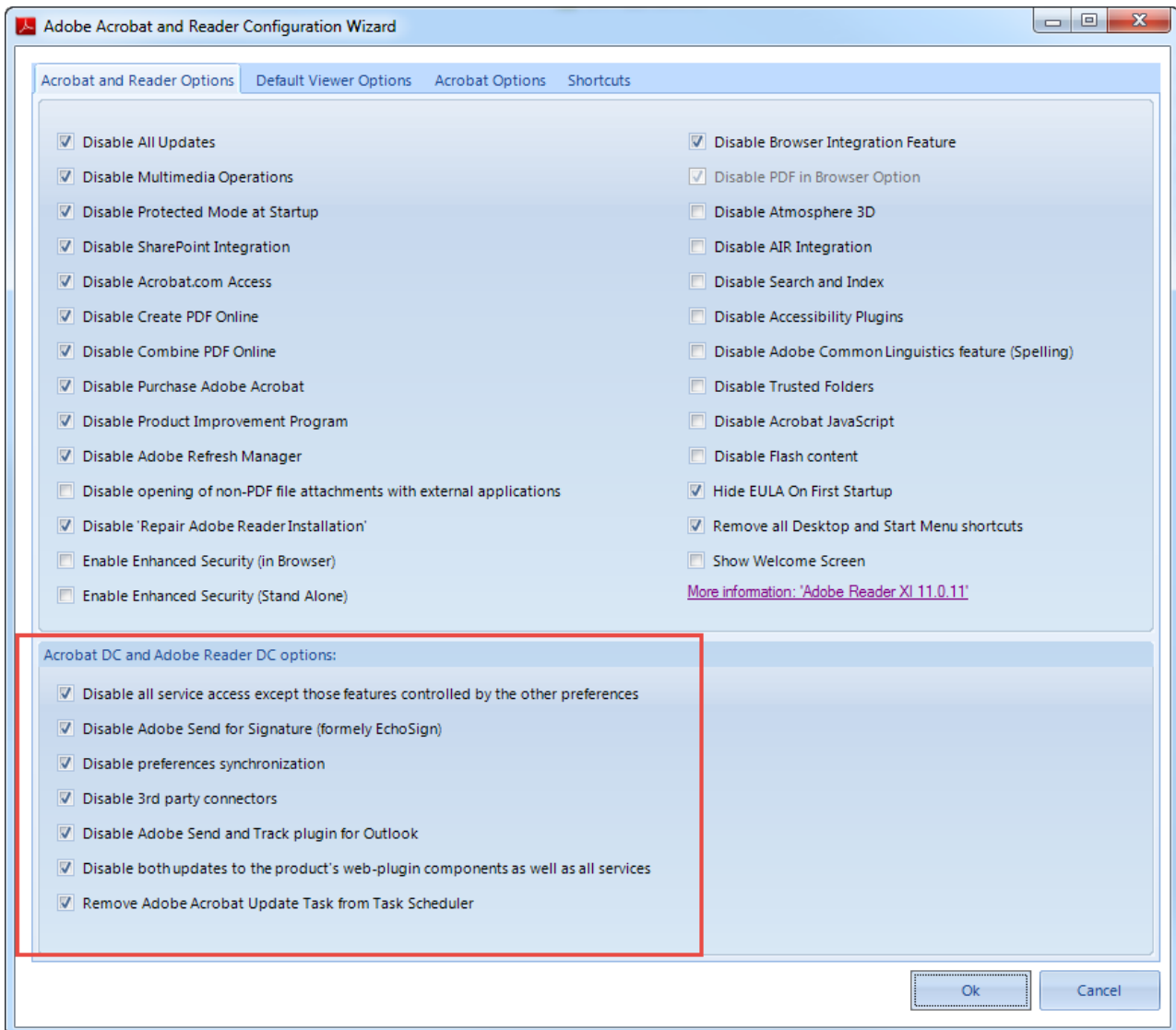
The files available in the folder where you downloaded them are:



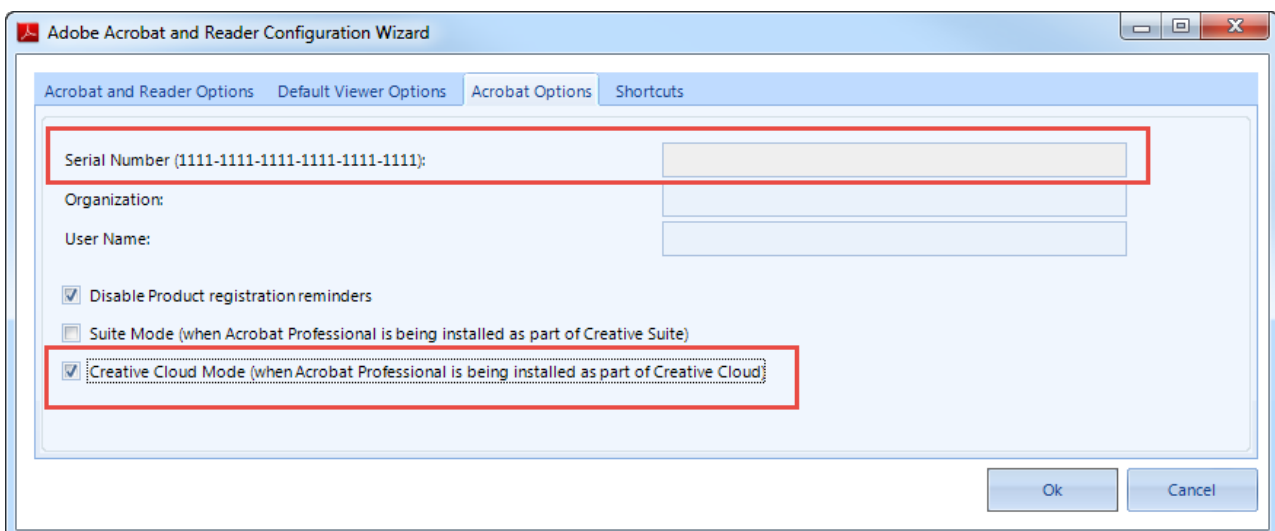
| Name                         | Date modified  | Type        | Size  |
|------------------------------|----------------|-------------|-------|
| Build                        | 2-7-2015 12:34 | File folder |       |
| Exceptions                   | 2-7-2015 12:34 | File folder |       |
| Adobe Acrobat Pro DC x86.ccp | 2-7-2015 12:34 | CCP File    | 16 KB |

The main MSI setup is in `..\Exceptions\APRO15.0nl_NL\Adobe Acrobat\AcroPro.msi`

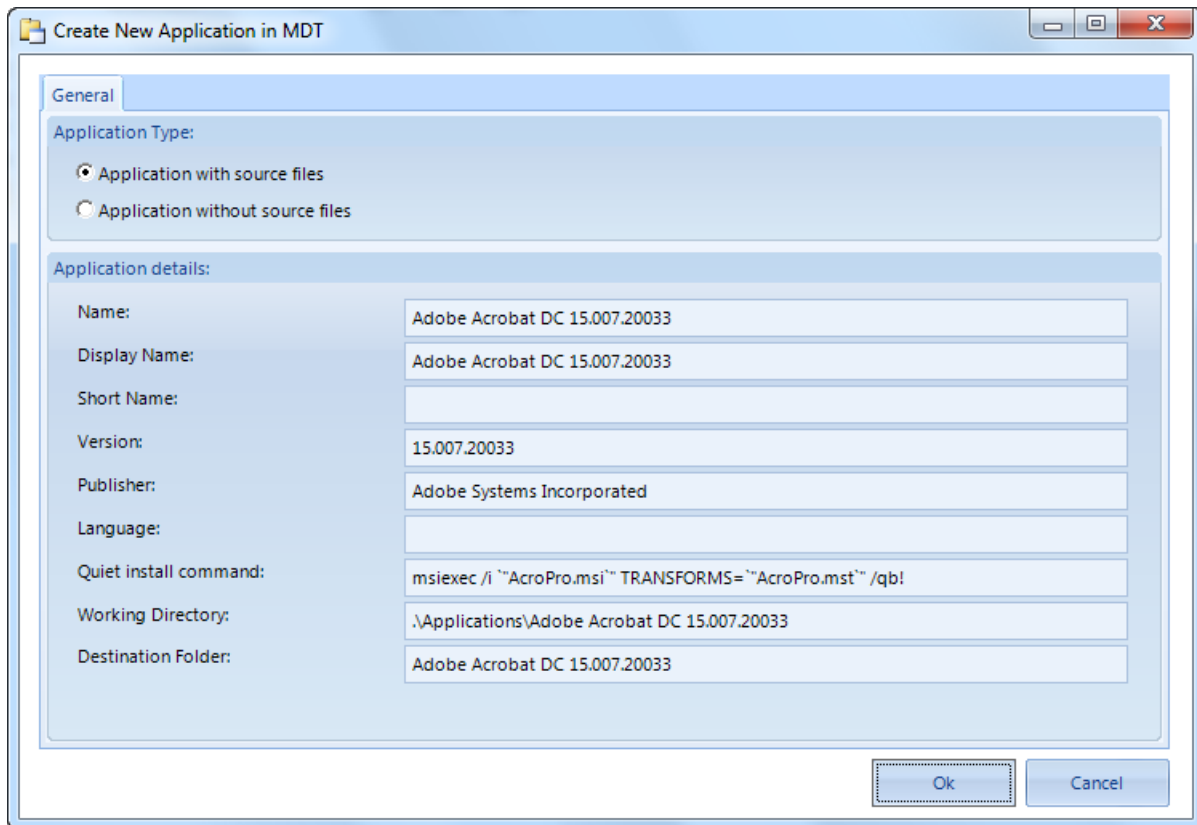
1. Open the Setup Commander and select this .MSI to create and configure a transform file using the 'Adobe Customization Wizard'.



2. Since Adobe Acrobat Pro DC is installed as part of Creative Cloud, select the **Creative Cloud Mode** checkbox. This will disable the 'Serial Number' textbox, as a serial number license is not needed since the 'Enterprise license' has been included in the 'Package'. Then click OK.



3. Create an application:

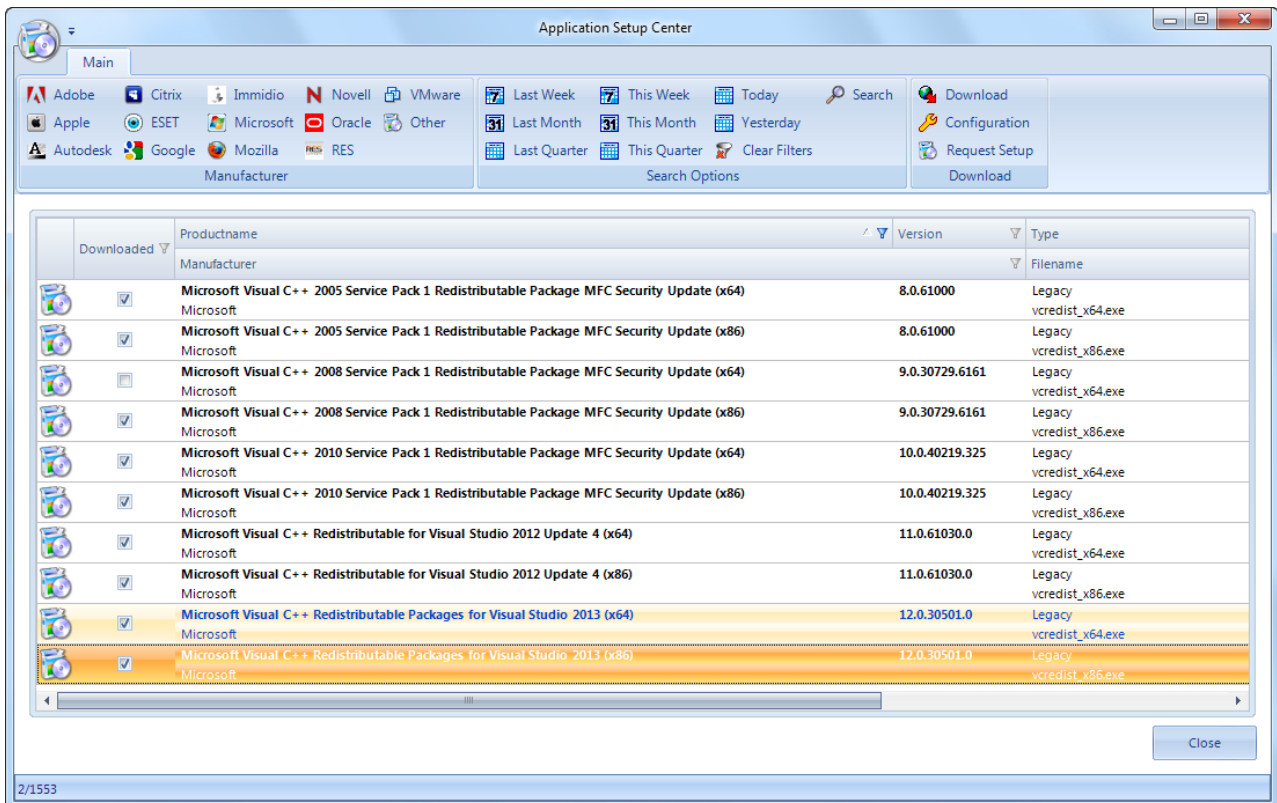


## Install Microsoft Visual C++ 2013 stand-alone

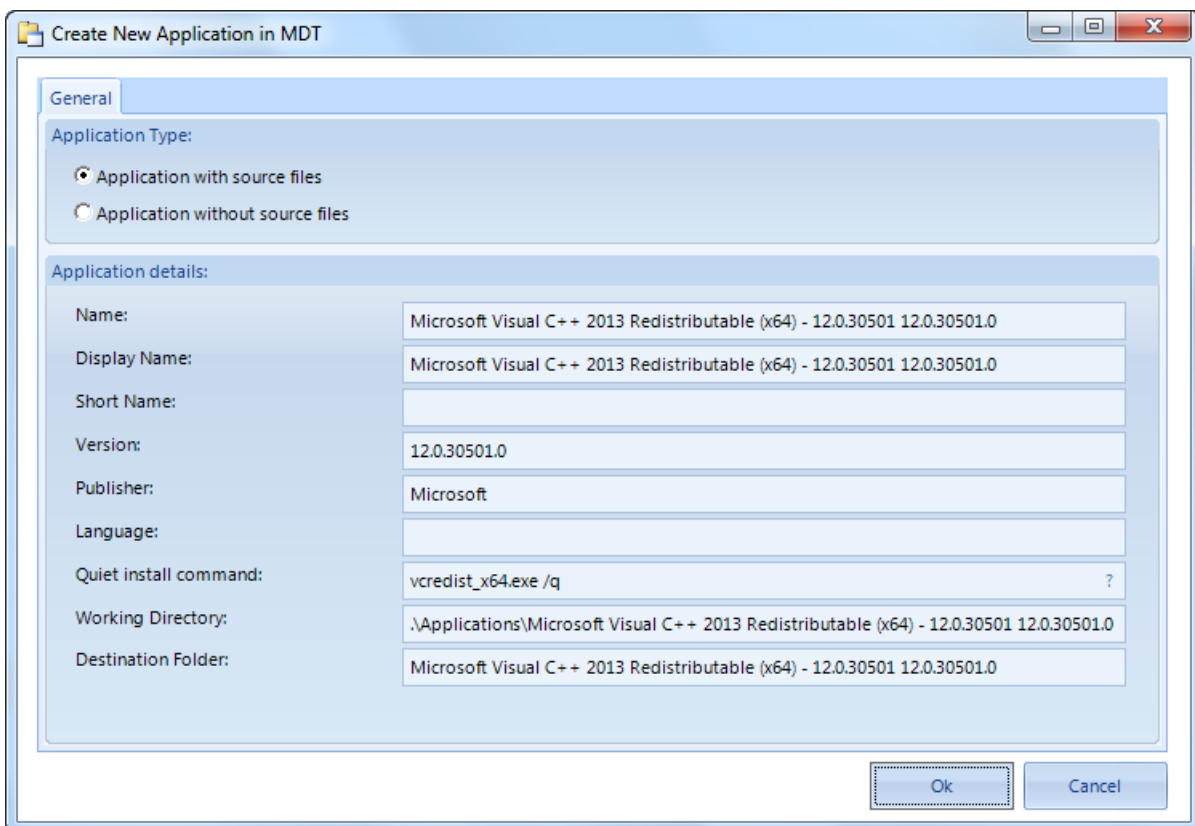
To deploy 'AcroPro.msi', you need to have 'Microsoft Visual C++ 2013' installed first. Although the 'Exceptions' folder contains a 'vc\_runtimeMinimum\_x64.msi' which can be used to install this prerequisite, it needs some tweaking to be installed stand-alone.

1. Download the latest VC++ Runtimes for the x86 and x64 platforms from Application Workspace Setup Store and use those:

# Recast



2. Then create an Application for this setup:



3. Create an application for `..\Adobe Pro DC\Build\Adobe Pro DC.msi` and make sure you select the **Application with source files** option.

# Recast

Create New Application in MDT

General

Application Type:

- Application with source files
- Application without source files

Application details:

|                        |  |
|------------------------|--|
| Name:                  | Adobe Acrobat Pro DC x86 1.0.0   |
| Display Name:          | Adobe Acrobat Pro DC x86 1.0.0   |
| Short Name:            |  |
| Version:               | 1.0.0  |
| Publisher:             | Adobe Systems Incorporated   |
| Language:              |  |
| Quiet install command: | msiexec /i ""Adobe Acrobat Pro DC x86.msi"" TRANSFORMS=""Adobe Acrobat Pro DC x8 |
| Working Directory:     | .\Applications\Adobe Acrobat Pro DC x86 1.0.0                                    |
| Destination Folder:    | Adobe Acrobat Pro DC x86 1.0.0   |

Ok Cancel

In MDT you can create an Application bundle with the 3 MSIs, using the following order:

- Microsoft Visual C++ 2013
- AcroPro.msi
- Adobe Pro DC.msi

# Recast

