

## Immersed

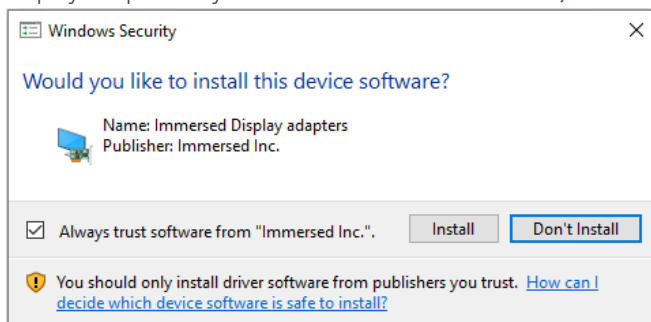
Last Modified on 04.16.26

### Unattended installation

If you want to install Immersed silently, there are some extra steps you have to take.

### Prerequisites

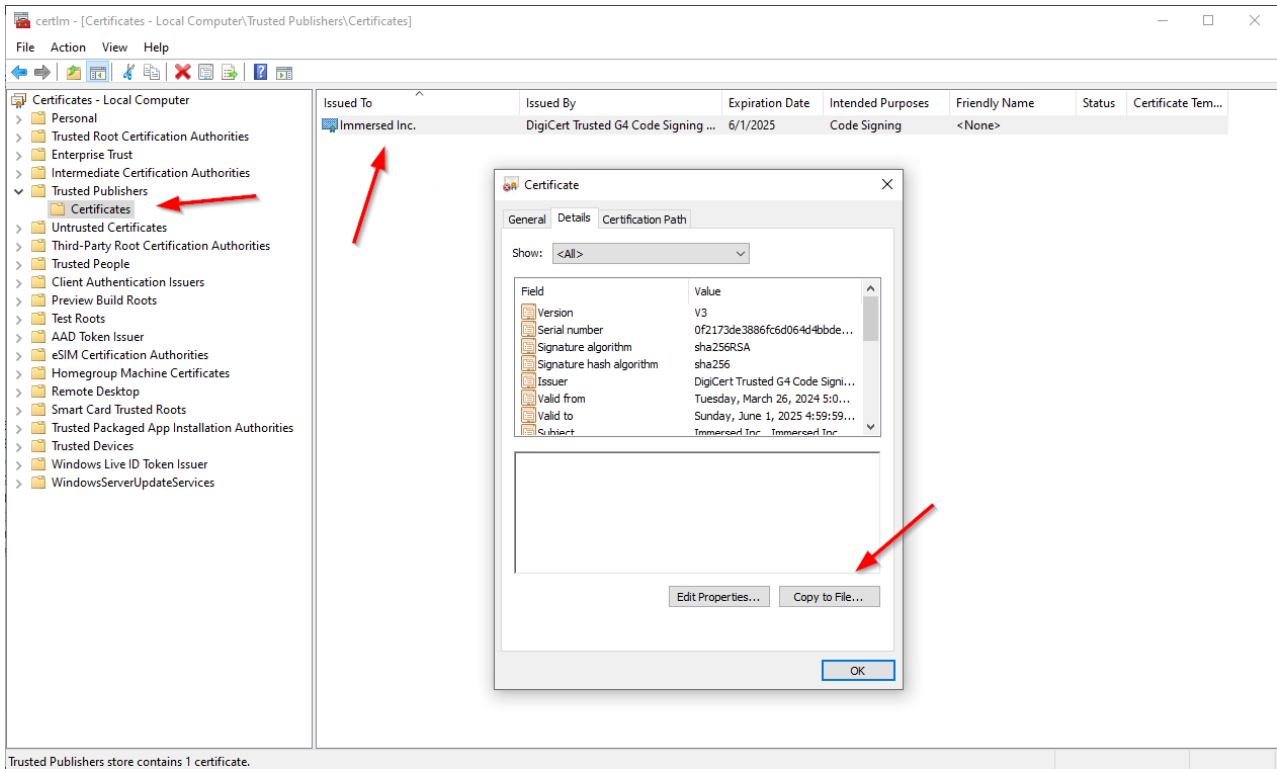
- Immersed – Normally when you install Immersed, you get an extra popup to allow the installation of Immersed Display adapters. If you don't install this device driver, the unattended installation will fail.



- Immersed Certificate – You have to install or inject this certificate. You can obtain this certificate on a machine where Immersed is installed.

### Exporting the Immersed Certificate:

1. Install Immersed on a test machine or VM.
2. Start `certmgr.msc` .
3. Locate the Immersed certificate in the **Trusted Publishers > Certificates** section.
4. Double-click the Immersed certificate.
5. Click the **Details** tab.
6. Click **Copy to file**.
7. Accept the wizard defaults and choose a location and filename for the certificate.
8. Copy the `.cer` file to a save place outside the test-machine.



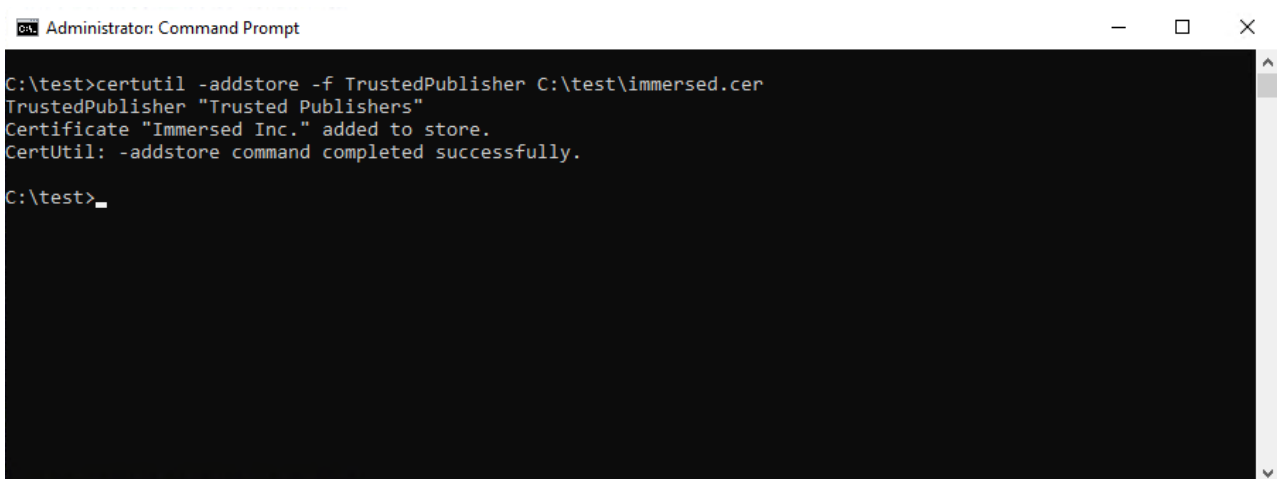
## Importing the Immersed Certificate:

On the machine or image where you want the certificate installed, open an elevated command prompt and type:

```
certutil -addstore TrustedPublisher [drive][path][certificate]
```

Example: `certutil -addstore TrustedPublisher c:\test\immersed.cer`

When the certificate is successfully installed, the following message will be displayed:



You can now do a silent install of Immersed.

## Further reading

[Immersed support webpage](#)

# Recast

---