

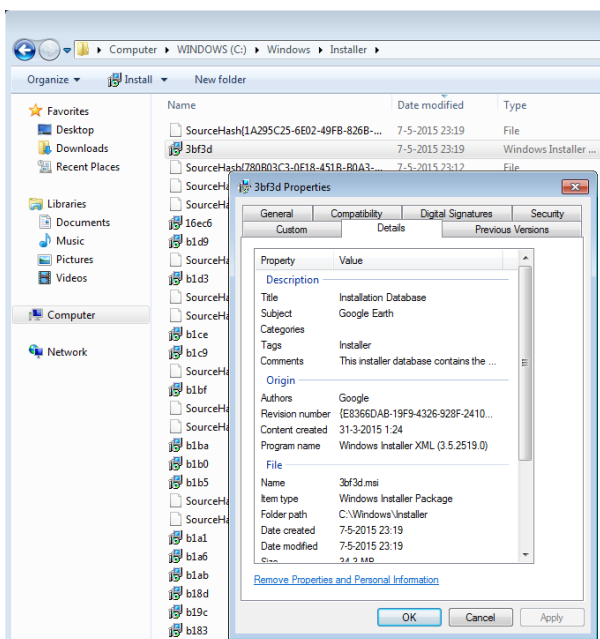
Google Earth

Last Modified on 2026-05-21

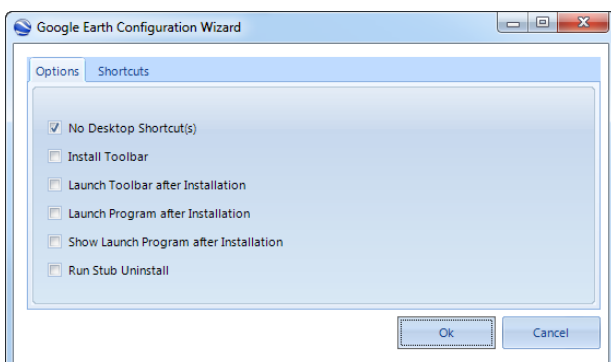
Google Earth can be downloaded from the Setup Store.

Because Application Workspace doesn't extract the embedded MSI automatically, we recommend the following workaround:

1. On a clean test machine, install Google Earth, with the downloaded installer.
2. After the installation, locate the MSI in the `C:\Windows\Installer` directory. It's a hidden system directory, so be sure you're able to see it. It will have a strange name, e.g. '3bf3d.msi'. You can check the properties to make sure you have the right MSI.

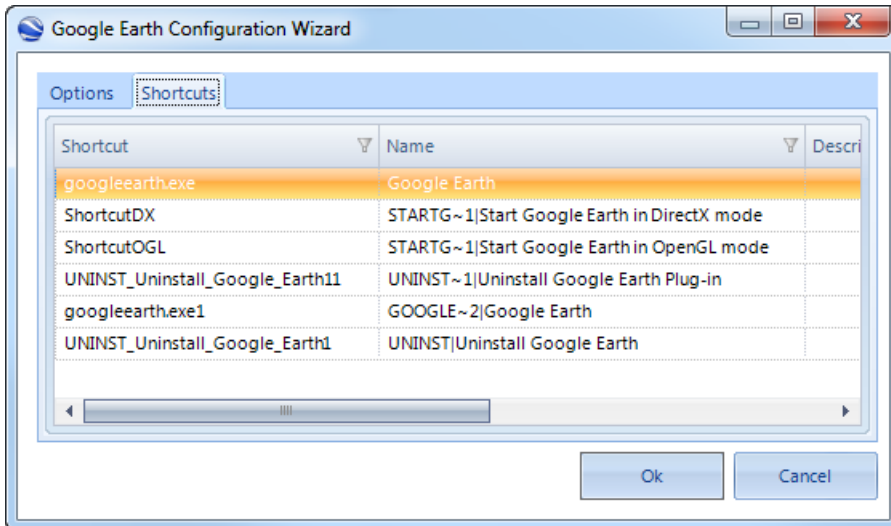


3. Copy this MSI back into your setup repository, and select it in Setup Commander. The following configuration wizard will open:



4. If you uncheck 'No Desktop Shortcut(s)' you can access the 'Shortcuts' tab. Here you can choose which shortcuts you want to delete by right-clicking on the shortcut.

Recast



Further reading

[Google Earth Help](#)
