

Brady Workstation

Last Modified on 04.16.26

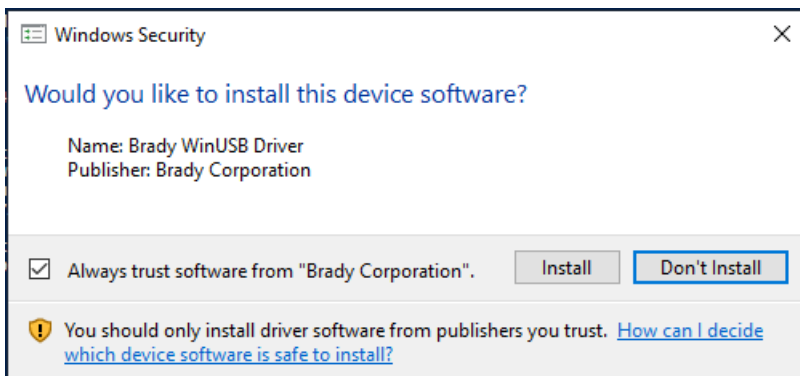
Unattended installation

The Setup Store wizard is prefilled with the command line `/install /quiet /norestart`.

Below are described some extra steps you have to take to silently install Brady Workstation.

Prerequisites

- Brady WinUSB Drive – Normally when you install Brady Workstation, you get an extra popup to allow the installation of Brady WinUSB Drive. If you don't install this device software, the unattended installation will fail.



- Brady Corporation Certificate – You have to install or inject this certificate. You can get this certificate from a machine where Brady Workstation is installed.

Exporting the Brady Corporation Certificate:

1. Install Brady Workstation on a test machine or VM.
2. Start `certmgr.msc`
3. Locate the certificate in the **Trusted Publishers > Certificates** section.
4. Double-click the certificate.
5. Click the **Details** tab.
6. Click **Copy to file**.
7. Accept the wizard defaults and choose a location and filename for the certificate.
8. Copy the `.cer` file to a place outside the test-machine.

Importing the Brady Corporation Certificate:

On the machine or image where you want the certificate installed, open an elevated command prompt and type:

```
certutil -addstore TrustedPublisher [drive][path][certificate]
```

Example: `certutil -addstore TrustedPublisher c:\test\bradycorp.cer`

Recast

A message will be displayed once the certificate is successfully installed.

You can now do a silent install of Brady Workstation.

Further reading

[Brady Workstation Apps support webpage](#)
