

HTTPS (Webserver certificates)

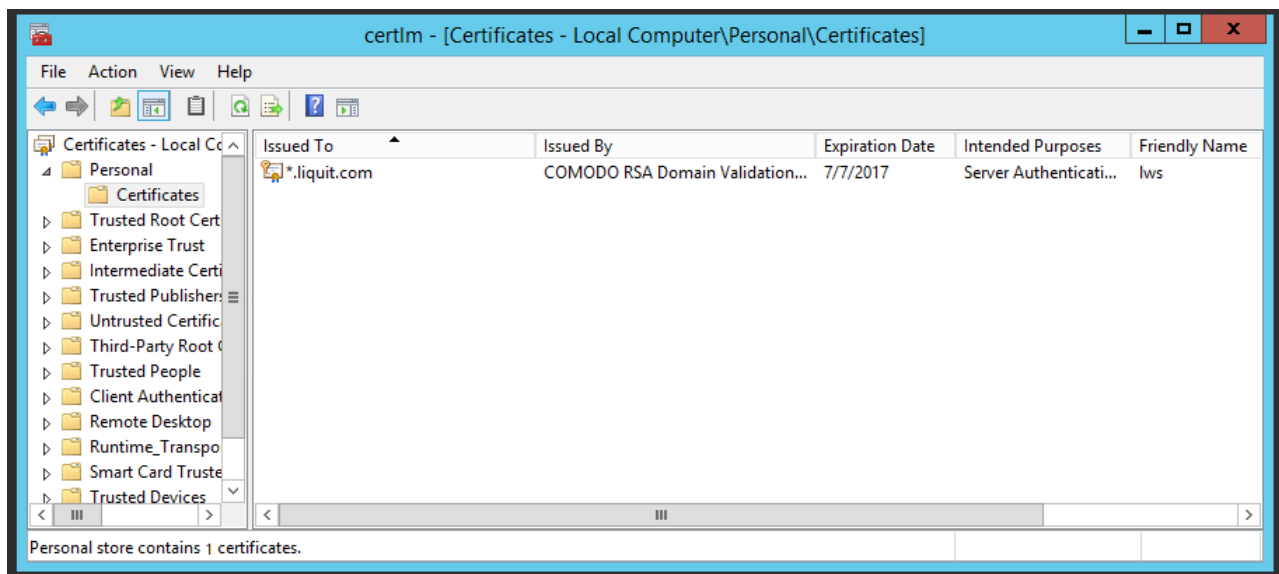
Last Modified on 04.16.26

To ensure the correct operation of Application Workspace' web version and Launcher, it is essential to have your own certificate on the local machine.

This article describes the steps of adding this certificate to your [primary zone](#). For non-primary zones and domains, the corresponding certificates can be added via [Application Workspace, in Domains](#).

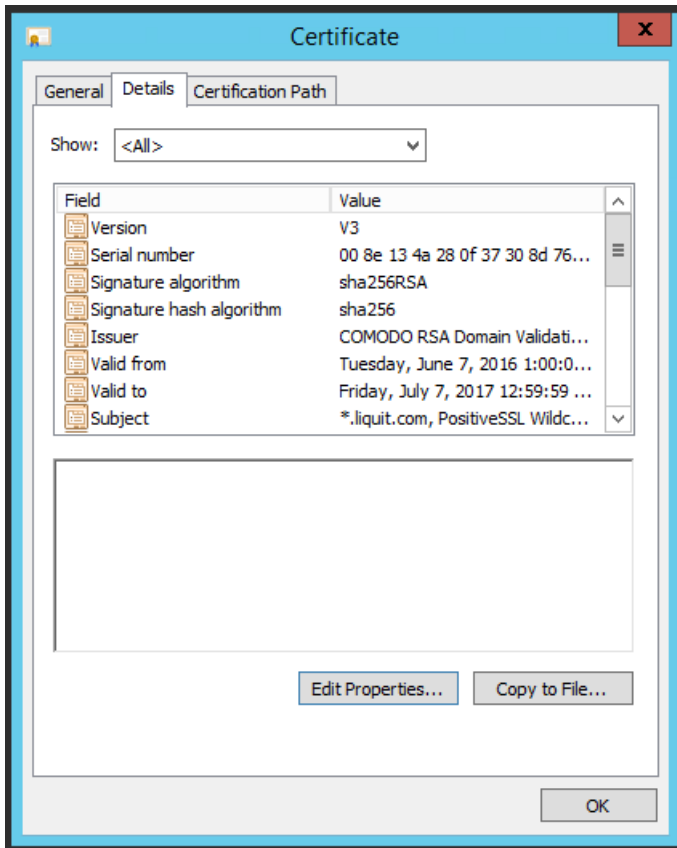
For the purpose of this example, we will use a `*.liquit.com` certificate.

1. Import the certificate in the personal folder of the local machine on Windows (certlm.msc).



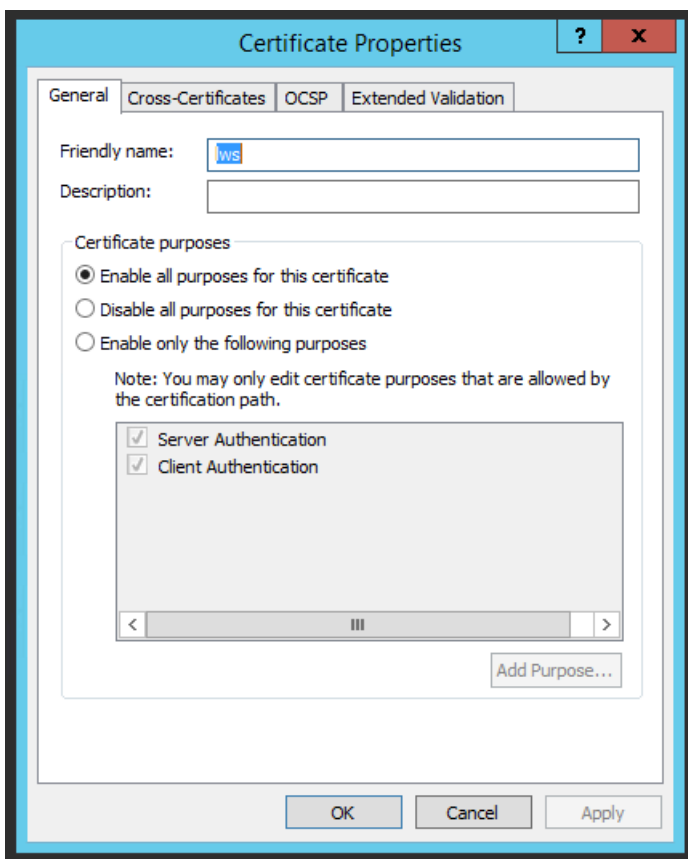
2. Open the certificate and navigate to the **Details** tab.

Recast



3. Click Edit Properties.

4. In the **General** tab, edit the value of the **Friendly name** field to "lws". This way Application Workspace can automatically select it on startup of the Application Workspace Server service and activate SSL support.



Recast

5. Restart the Application Workspace Server service to apply the SSL certificate.
-