

Manually update Application Workspace Server

Last Modified on 04.16.26

To manually update the Application Workspace Server, follow the steps described below:

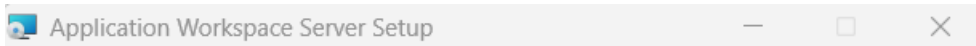
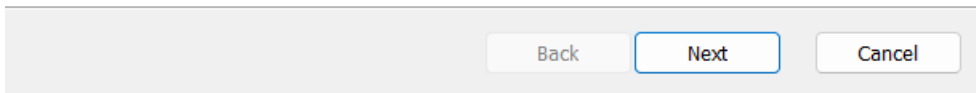
1. When you run the wizard, click Next in the first three windows.



Welcome to the Application Workspace Server Setup Wizard

The Setup Wizard will install Application Workspace Server on your computer. Click Next to continue or Cancel to exit the Setup Wizard.

Recast



End-User License Agreement

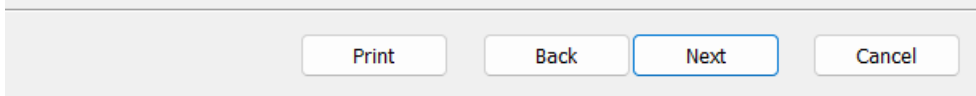
Please read the following license agreement carefully

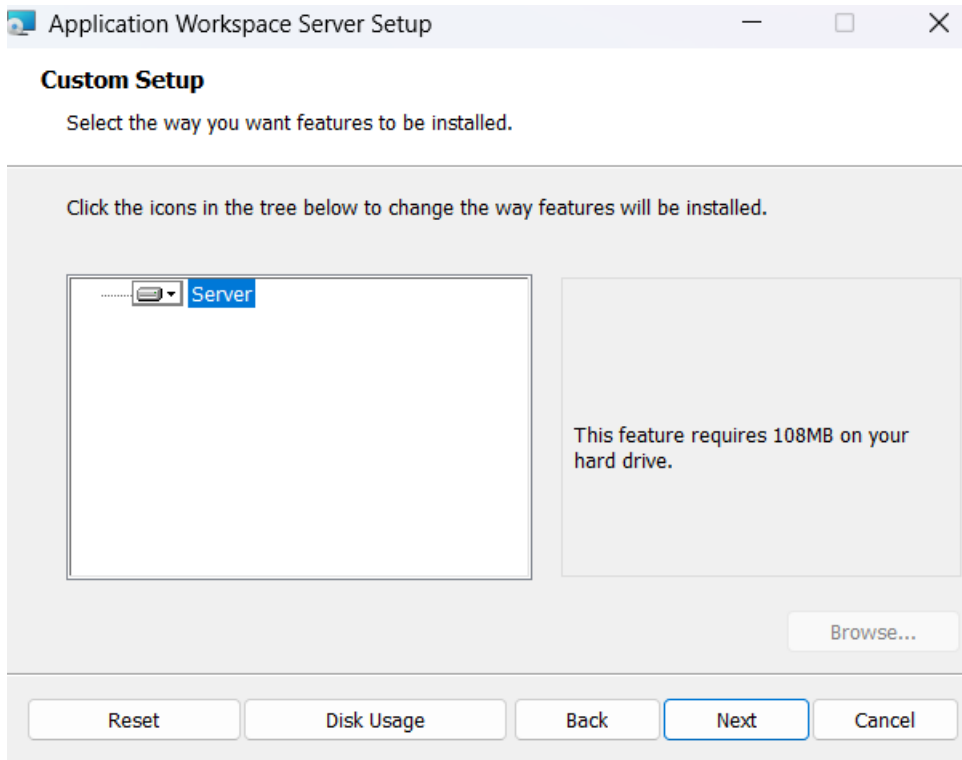
LIQUIT END USER LICENSE AGREEMENT

Preamble

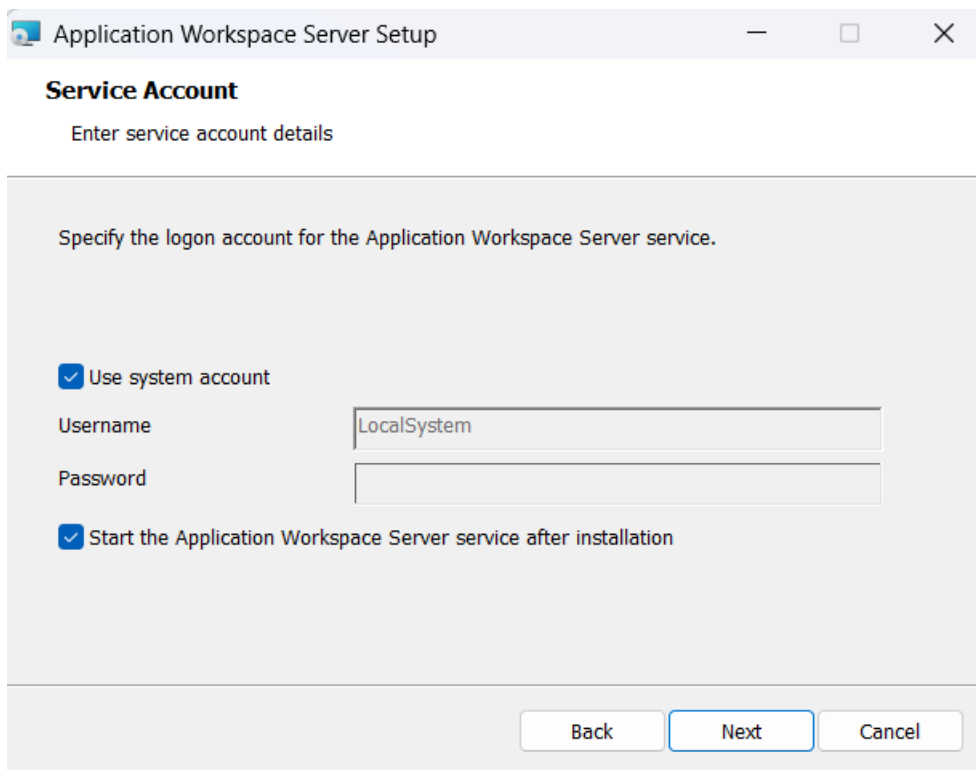
This Liquit End User License Agreement together with its addenda ("EULA") is between the customer (hereinafter "**Customer**", or "**you**") and either **Liquit B.V.**, a private company with limited liability, incorporated and existing under Dutch law, having its registered office at Kastanjelaan 6, 2982 CM Ridderkerk, the Netherlands, registered with

I accept the terms in the License Agreement





2. In the **Service Account** window, provide the logon account for the Application Workspace Server Service, this account will be used for database connectivity when "Use Windows Authentication" option will be configured for database access and/or for securing access to the Content Store.



3. Click **Next**.

4. In the **Setup Database** window, enter the database connectivity information which will be used by the Application Workspace Server service.

The screenshot shows the 'Setup Database' window. The title bar reads 'Application Workspace Server Setup'. The main heading is 'Setup Database' with the subtitle 'Specify database connectivity information.' Below this, a message states: 'Specify database connectivity information. Please make sure the database exists before continuing.' The form contains the following fields: 'Server' with the value 'MYPC\SQLEXPRESS', 'Database' with the value 'ApplicationWorkspaceDB', 'Authentication' set to 'Windows Authentication', and empty fields for 'Username' and 'Password'. At the bottom right, there are three buttons: 'Back', 'Next', and 'Cancel'.

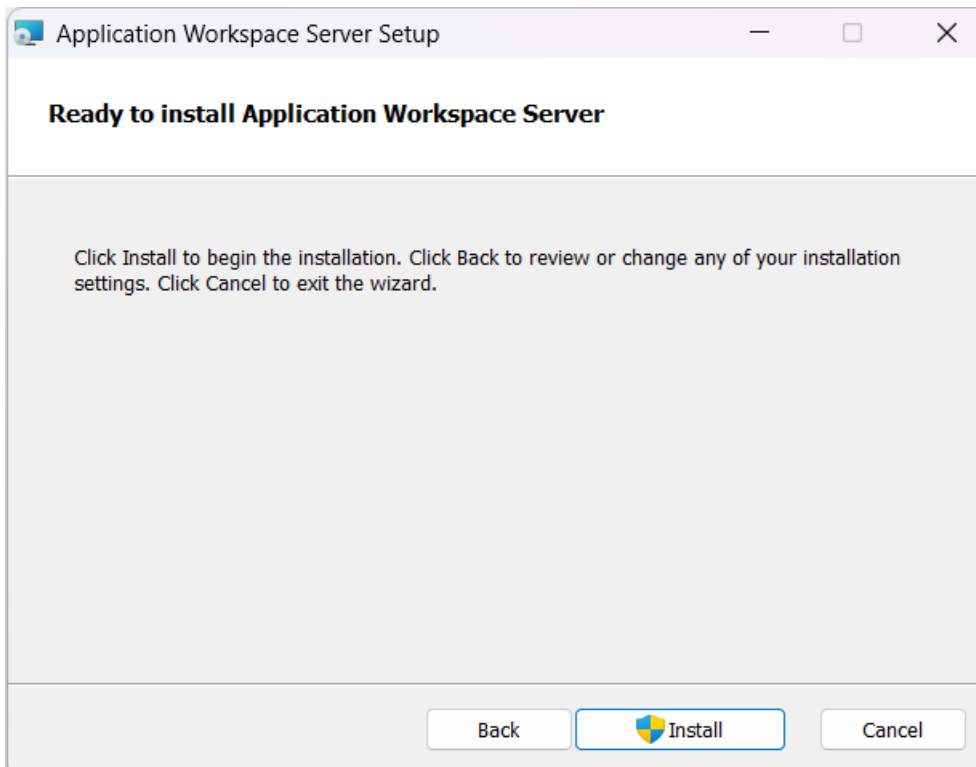
5. Click Next.

6. In the SQL Database Schema window select the checkbox and click Next.

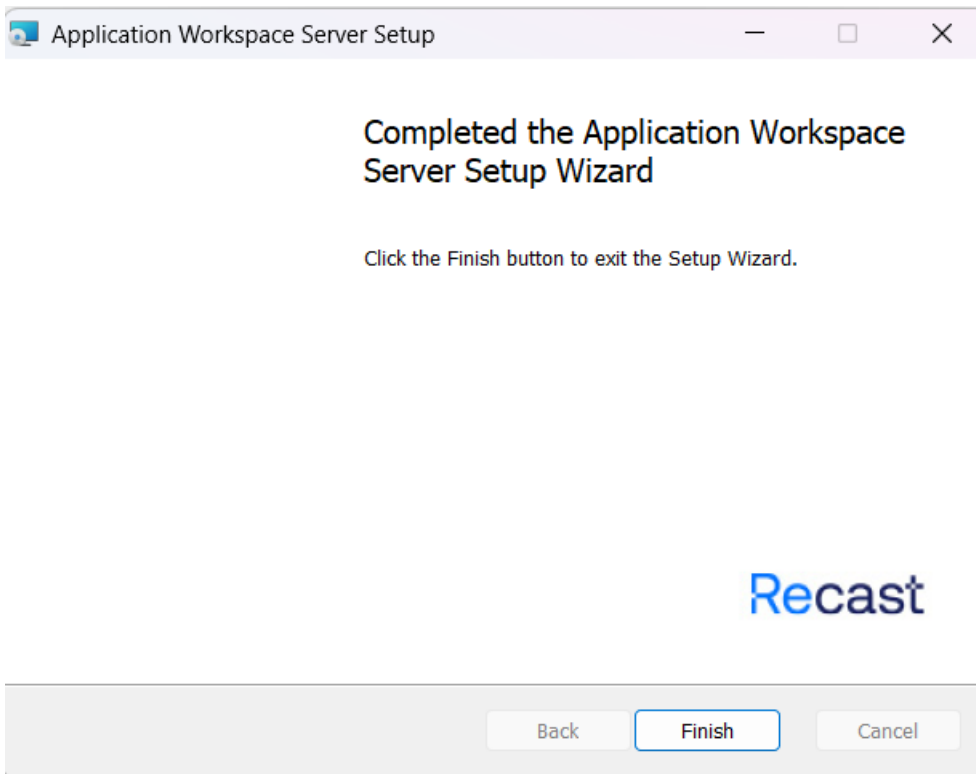
The screenshot shows the 'SQL Database Schema' window. The title bar reads 'Application Workspace Server Setup'. The main heading is 'SQL Database Schema' with the subtitle 'Database schema upgrade'. A warning icon is followed by the text: 'Application Workspace Server Setup has detected that the below database(s) require a database schema upgrade.' Below this, a message box contains the text: 'Upgrade required: ApplicationWorkspaceDB on MYPC\SQLEXPRESS to schema 4036'. At the bottom, there is a checked checkbox with the text: 'I have taken a backup of the existing Application Workspace Server database(s)'. At the bottom right, there are three buttons: 'Back', 'Next', and 'Cancel'.

7. In the Ready to install Application Workspace Server window click Install.

Recast



8. After the installation is successfully completed, click Finish.



Recast



Automated updates
For automated updates, see System Updates.

Recast
