

## ConfigMgr Setup for Patching

Last Modified on 12.01.25

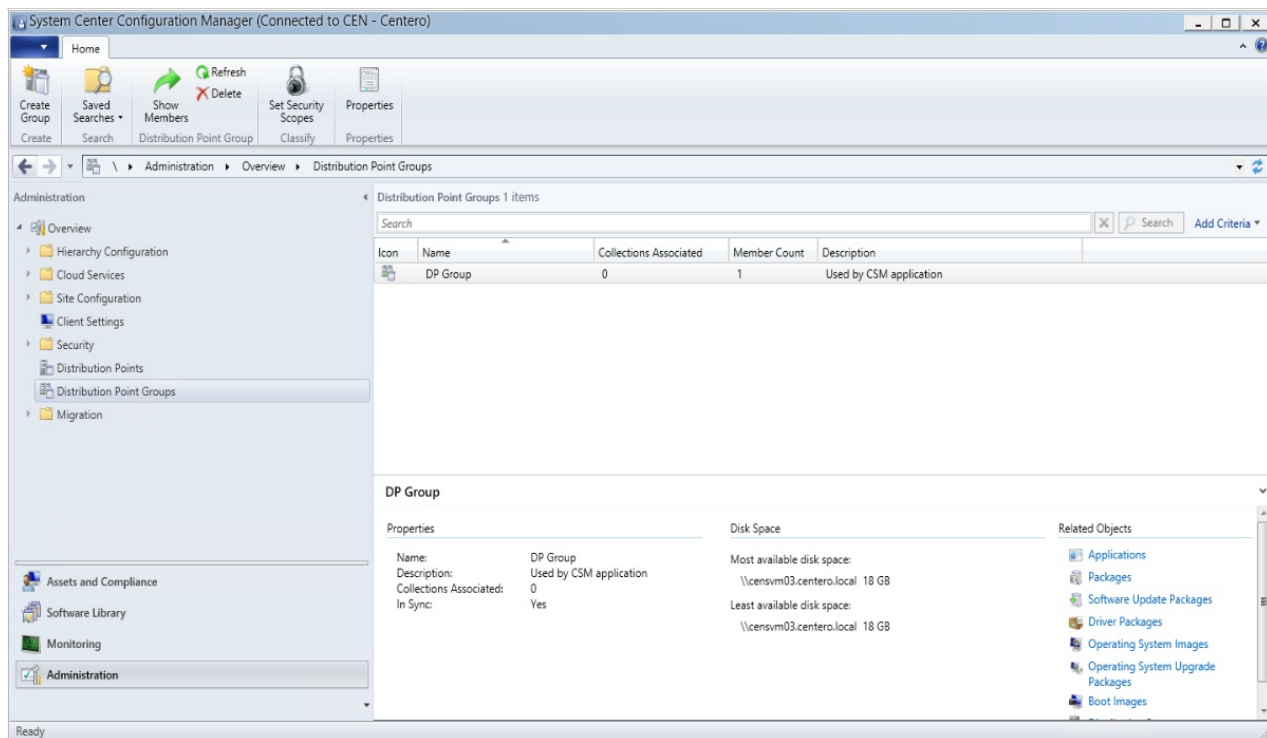
For Right Click Tools Patching to work within your Configuration Manager Console, you'll need to set up Distribution Point Groups and Collections in your ConfigMgr environment. You also have the option to set up an Application Root Folder.

### Set Up Distribution Point Groups

Patching targets application content to distribution point groups. You must have or create at least one distribution point group in Configuration Manager before installing Patching. You might want to include all distribution points in your distribution point group, but in larger environments it's possible to include only distribution points used for application media distribution. You can use existing distribution point groups in Patching.

To create a new distribution point group:

1. In your Configuration Manager console, navigate to **Administration > Distribution Point Groups**.
2. In the upper left-hand corner, click **Create Group**.



3. In the window that opens, specify a **Name** for the distribution point group.
4. On the **Members** tab, select the distribution points where content should be distributed by Configuration Manager when new applications are created by Patching and click **OK**.

### Set Up Collections

Device and user collections are used as a deployment target in Patching deployment processes. You can create collections in your Configuration Manager console by navigating to **Assets and Compliance > Device Collections** or **User collections**.

# Recast

If you are using Patching to deploy all your selected applications to all of your devices, which is most common, you only need two collections — Pilot & Production.

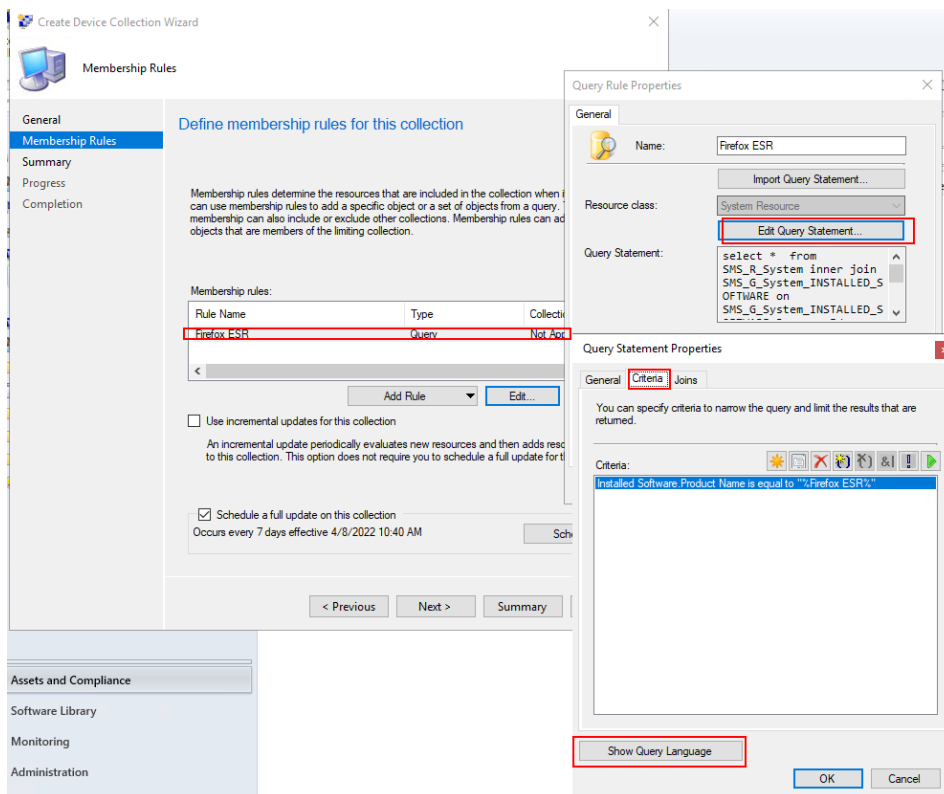
## Create an Application-Specific Collection

To deploy an application to only those devices containing a previous version of the application, you can create application-specific collections in Configuration Manager by using queries. After the collection is created, add it to an application-specific deployment process in Patching.

- In addition to deploying an application to an application-specific collection as a Required deployment, you can also create an Available deployment for the rest of your devices.
- If the newly created collection is not visible in Patching, navigate to the **Deployment Processes** page in RMS and click the Refresh icon on the **Add Collection** side panel.

To configure an application-specific query for a collection:

1. On the **Membership Rules** page in the device or user collections wizard, add a query rule to a collection.
2. Under Query Rule Properties, click **Edit Query Statement**.
3. On the **Criteria** tab, add new criteria and select **Installed Software > Product Name**. Add the application name to the **Value** field with percentage symbols around it (%APPLICATION%).



## Example queries for application-specific collections

You can also use our example queries as listed below. Add a WQL query by selecting **Show Query Language** in the **Query Statement Properties** window.

**TIP:** You can determine an application's exact product name in your Configuration Manager console by selecting a device with the application installed and going to **Resource Explorer > Installed Software**.

### Mozilla Firefox

# Recast

```
select * from SMS_R_System inner join SMS_G_System_INSTALLED_SOFTWARE on SMS_G_System_INSTALLED_SOFTWARE.ResourceId = SMS_R_System.ResourceId where SMS_G_System_INSTALLED_SOFTWARE.ProductName = "Firefox x64"
```

Google Chrome

```
select * from SMS_R_System inner join SMS_G_System_INSTALLED_SOFTWARE on SMS_G_System_INSTALLED_SOFTWARE.ResourceId = SMS_R_System.ResourceId where SMS_G_System_INSTALLED_SOFTWARE.ProductName = "Google Chrome (64-bit)"
```

Adobe Reader DC

```
select * from SMS_R_System inner join SMS_G_System_INSTALLED_SOFTWARE on SMS_G_System_INSTALLED_SOFTWARE.ResourceId = SMS_R_System.ResourceId where SMS_G_System_INSTALLED_SOFTWARE.ProductName = "Adobe Acrobat Reader DC (64-bit)"
```

If the product name includes a version

```
select SMS_R_System.ResourceId, SMS_R_System.ResourceType, SMS_R_System.Name, SMS_R_System.SMSUniqueIdentifier, SMS_R_System.ResourceDomainORWorkgroup, SMS_R_System.Client from SMS_R_System inner join SMS_G_System_INSTALLED_SOFTWARE on SMS_G_System_INSTALLED_SOFTWARE.ResourceId = SMS_R_System.ResourceId where SMS_G_System_INSTALLED_SOFTWARE.ProductName like "<product name>%"
```

---

## Set Up Application Root Folder

Right Click Tools Patching will create a folder structure for Configuration Manager in **Software Library > Application Management > Applications**. You can specify the root folder name created under **Applications**. All applications added by Patching will be created under this root folder with the following structure: Publisher > Application name. By default, the root folder name is **Patching** (previously **Application Manager**), but you can change this in the [deployment process settings](#).

---

---