

Connect Browser Extension to Recast Management Server

Last Modified on 04.22.26

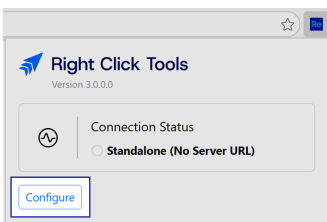
Make the most of the Right Click Tools for Intune browser extension by connecting it to your Recast Management Server.

To connect the browser extension to RMS:

1. In your browser toolbar, click the Recast icon.



2. Click **Configure**.



3. On the **Right Click Tools Configuration** page that opens, enter the **Server URL**, including `https://` at the beginning. Click **Save**.

The **Connection Status** should show as 'Connected'.

