



Update Applications With Previous Versions

Last Modified on 08.18.25

You can deploy an application to only devices that have a previous version installed by creating an application-specific collection in Configuration Manager using a query. You can then specify the application-specific collection as a target collection for a deployment process in Patching.

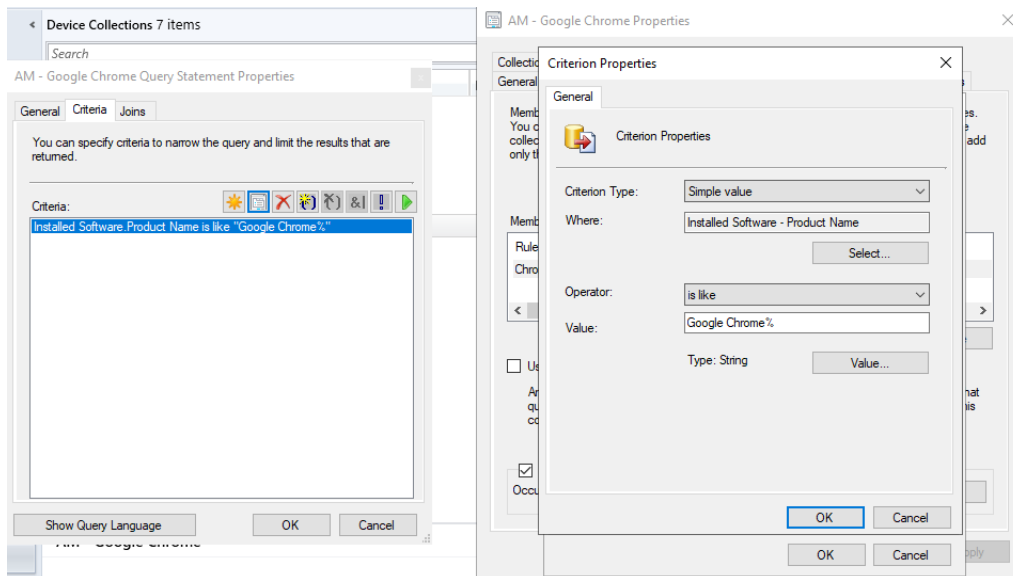
Create an Application-specific Collection

To create an application-specific collection in Configuration Manager:

1. On the Configuration Manager **Membership Rules** page, create a new device collection and add a query rule.
2. Specify a query name and click **Edit Query Statement**.
3. On the **Criteria** tab, add a new criterion with the following properties:
 - Criterion Type: **Simple value**
 - Where: **Installed Software - Product Name**
 - Operator: **is like**
 - Value: Specify the application name. You can add a wildcard character (%) at the beginning and/or at the end of the application name to find all application versions.

NOTE: You can find a list of product names in your environment by clicking the **Value** button in the Criterion Properties window. The list might not contain all products. The full list can be found on the **Count of all instances of software registered with Add or Remove Programs** report. If the application name in the Application Manager catalog does not exactly match the name in the product list, use the name from the **Value** list or the report.

Example collection for Google Chrome:



Create an Application-specific Deployment Process

To create an application-specific deployment process:

1. On the Application Manager **Deployment Processes** page, click **Add Deployment Process** or modify an existing process.
2. In the **Select Application(s)** side panel that opens, select only the application you want deploy. Click **Next**.
3. Name the deployment process and click **Next**.
4. Add the previously created collection as the target collection and configure a deployment schedule. Make sure that the deployment type is **Required**.
5. If desired, create an additional **Available** type deployment for all users/devices so that the application can be installed from the Software Center to devices without a previous version.
6. Save the deployment process and click **Run**.

Example deployment process for Google Chrome:

1 application [edit](#)

Google Chrome for Business 64-bit en-US X64

Deployment Process	Duration	Release date	+1 Days	+2 Days	+3 Days	+4 Days
Google Chrome for Business 64-bit	Total: 2 Days					
1. Deploy to AM - Pilot ①	Immediately					
Delay 2 days	2 Days					
2. Deploy to AM - Google Chrome ①	Immediately					
3. Deploy to All Users ①	Immediately					