

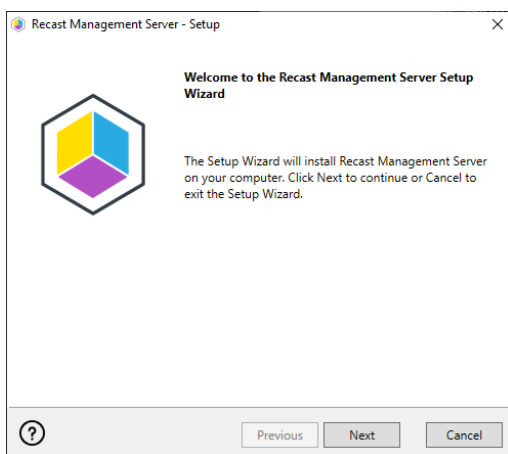
# Install Recast Management Server with Proxy

Last Modified on 08.06.25

Recast Management Server software can be installed on its own server or on the primary Configuration Manager server.

## Run the Recast Management Server Installer

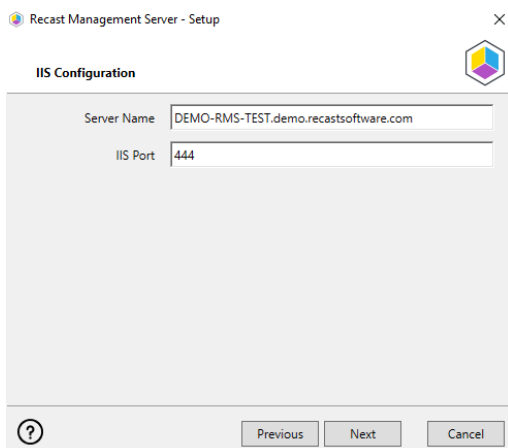
After downloading Recast Management Server from the [Recast Portal](#), run the installer and follow its prompts.



## IIS

To configure IIS:

1. On the **IIS Configuration** page, change the **Server Name** only if the client is going to use a DNS alias.
2. Set the **IIS Port**. The default IIS Port is **TCP 444**, to prevent conflicts when Recast Management Server is installed on Configuration Manager servers. The IIS Port can be changed to 443, or any open TCP port, to suit your environment.

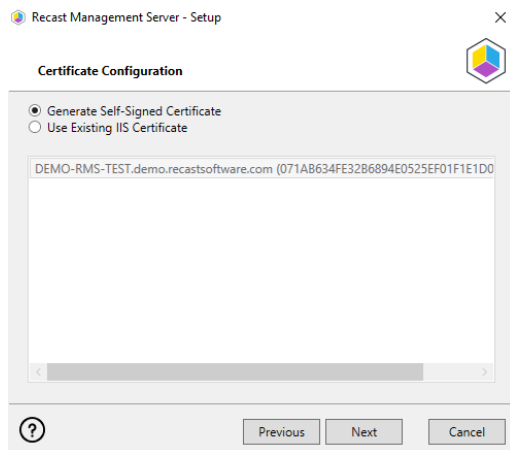


## Certificates

Recast Management Server requires a certificate for secure communication with Right Click Tools and any Recast Proxies.

To configure a certificate:

On the **Certificate Configuration** page, we recommend that you **Use an Existing IIS Certificate** issued by a trusted Certificate Authority (CA). If you choose to **Generate a Self-Signed Certificate**, you must [import the Recast Management Server self-signed certificate to the Trusted Root Certificate Authorities store](#) on devices running Right Click Tools, Recast Agent, or Recast Proxy.



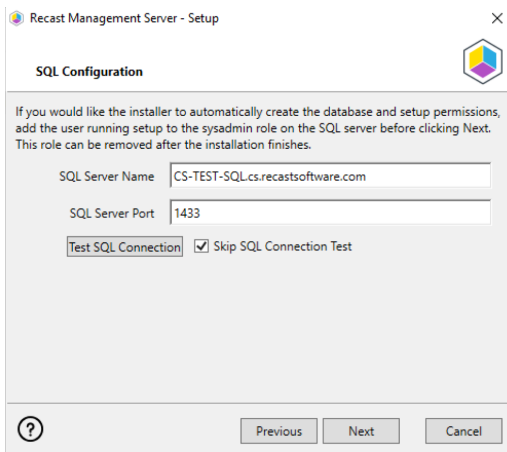
### CERTIFICATE NOTES:

- The certificate subject name (or a subject alternative name) should match the server name in the URL that Right Click Tools and Recast Proxies are pointed toward.
- Right Click Tools will prompt for any untrusted certificates and add them to an allowed list.
- The certificate can be changed later by editing the Binding in IIS Manager.

## SQL Server

There are two types of permissions that will allow the Recast Management Server installer to automatically create the SQL database with all the necessary permissions:

- The user account running the installation can be assigned a SysAdmin role in the SQL instance. If the user account has permission to connect remotely, use the **Test SQL Connection** button to check connectivity to the SQL Server during the install. After the RMS installer creates the database, the SysAdmin permission can be removed.
- The computer account of the Recast Management Server can be granted **db\_creator** permissions. In this case, check the **Skip SQL Connection Test** box.



Recast Management Server - Setup

**SQL Configuration**

If you would like the installer to automatically create the database and setup permissions, add the user running setup to the sysadmin role on the SQL server before clicking Next. This role can be removed after the installation finishes.

SQL Server Name: CS-TEST-SQLcs.recastsoftware.com

SQL Server Port: 1433

☒ Skip SQL Connection Test

## SQL SERVER NOTES:

- The default SQL Server Port Number is 1433.
- Recast strongly recommends a fully licensed version of SQL to avoid the 10GB storage limitation of SQLExpress. SQLExpress use is only supported for POC implementations of Right Click Tools.
- After the SQL database is created, [set the database recovery model to simple](#) to prevent storage issues.
- **Remote SQL Server:** The computer account of Recast Management Server will need db\_owner permissions to create the database on the remote device. If the account running the Recast Management Server installer does not have permission to create a SQL database, the database administrator can [pre-create the RecastManagementServer database](#) and manually give the computer account db\_owner permissions.
- **Local SQL Server:** The IIS AppPool\Recast Management Server account will need db\_owner permissions to create the database on the local device. Alternatively, the database administrator can [pre-create the database](#) and give the IIS AppPool\Recast Management Server account db\_owner permissions to the database. The IIS AppPool\Recast Management Server account will not exist until after the installation completes, so the permissions will need to be given after installation.

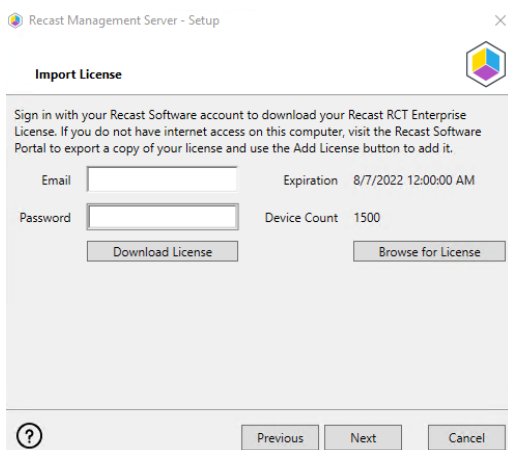
## Import License

You can download and import your Recast licenses when installing Recast Management Server.

To download your Enterprise license:

1. On the **Import License** page, enter your Recast Portal email address and password.
2. Click **Download License**. The license information will appear in the right-hand column.

**NOTE:** If your server does not have internet access, click **Browse for License** to browse the filesystem for a license file that has been exported from the [Recast Portal](#).



**Import License**

Sign in with your Recast Software account to download your Recast RCT Enterprise License. If you do not have internet access on this computer, visit the Recast Software Portal to export a copy of your license and use the Add License button to add it.

Email  Expiration 8/7/2022 12:00:00 AM

Password  Device Count 1500

## Proxy

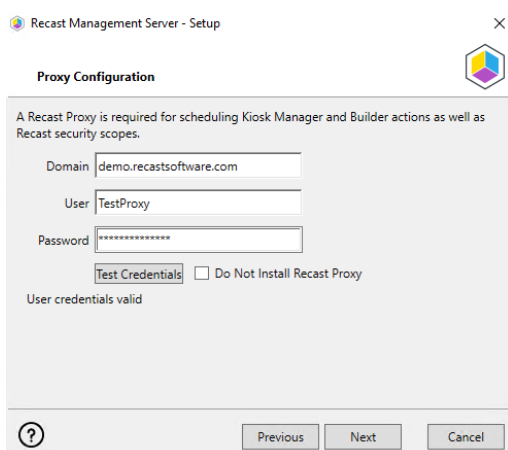
If the Recast Proxy is being installed on a server other than the Recast Management Server, [install the Proxy separately](#) after Recast Management Server installation.

**NOTE:** Proxy configuration is optional for Privileged Access where Active Directory or Entra ID objects are not used to target rules.

To configure the proxy during RMS installation:

On the installer's **Proxy Configuration** page, enter the service account **Domain**, **Username**, and **Password** and click **Test Credentials** to verify service account details.

**TIP:** If you haven't already set up the required proxy permissions, remove any information from the text fields, select **Test ConfigMgr Connection** and the **Skip ConfigMgr Verification** checkbox, and click **Next**.



**Proxy Configuration**

A Recast Proxy is required for scheduling Kiosk Manager and Builder actions as well as Recast security scopes.

Domain

User

Password

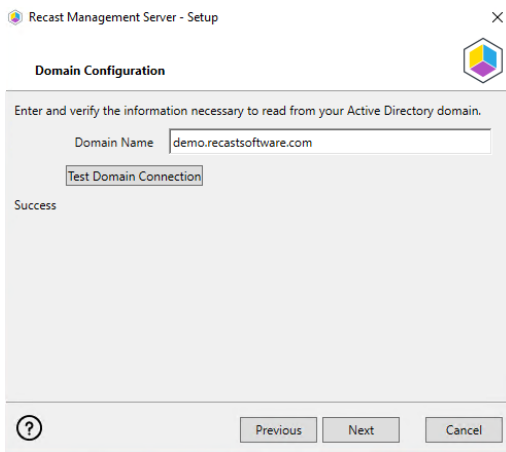
☐ Do Not Install Recast Proxy

User credentials valid

## Domain

To configure your domain:

1. On the **Domain Configuration** page, enter the **Domain Name**.
2. Click **Test Domain Connection** to verify that the service account has access to read from your domain. The test should show **Success**.



## Configuration Manager

**NOTE:** Configuration Manager does not need to be set up for Privileged Access.

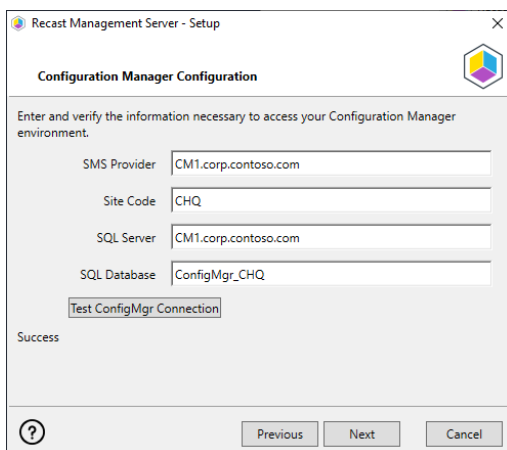
To set up your Configuration Manager for the proxy:

1. On the **Configuration Manager Configuration** page, enter the following information:

- Name of the site server that has your **SMS Provider** role
- **Site Code**
- Name of the **SQL Server** where your Configuration Manager SQL database is located
- **SQL Database** name

**NOTE:** You can skip the **Configuration Manager Configuration** page during Recast Management Server or Recast Proxy installation by removing any information from the text fields, selecting **Test ConfigMgr Connection** and the **Skip ConfigMgr Verification** checkbox, and clicking **Next**.

2. Click **Test ConfigMgr Connection** to check that the service account has access.



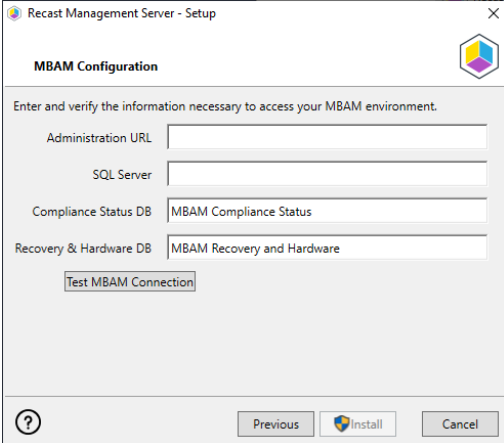
## MBAM

MBAM configuration is only required for a separate MBAM Server. If you are using the ConfigMgr-integrated BitLocker or AD, you can skip this section. MBAM also does not need to be configured for Privileged Access or Patching.

To configure MBAM:

1. Tap **Click Here to Configure MBAM**.

2. Add your **Administration URL** and **SQL Server** information.
3. Click **Test MBAM Connection** to verify that the service account has access to MBAM.



The image shows a Windows-style setup window titled "Recast Management Server - Setup". The window has a close button (X) in the top right corner. Below the title bar, there is a logo and the text "MBAM Configuration". The main area of the window contains the instruction "Enter and verify the information necessary to access your MBAM environment." followed by four text input fields: "Administration URL", "SQL Server", "Compliance Status DB" (with "MBAM Compliance Status" entered), and "Recovery & Hardware DB" (with "MBAM Recovery and Hardware" entered). Below these fields is a button labeled "Test MBAM Connection". At the bottom of the window, there is a help icon (question mark), a "Previous" button, an "Install" button with a logo, and a "Cancel" button.

## Initiate RMS Installation

Once you have filled in all the necessary information, click **Install** at the bottom of the **MBAM Configuration** page.

When the installation is complete, open the Recast Management Server by navigating to `https://ServerFQDN:Port` in a web browser (Chrome, Edge, or Firefox are recommended).

When asked to sign in, enter the username and password for the account used to install the Recast Management Server.

## Installation Log Location

To check the installation logs for Recast Management Server and Recast Proxy (when installed together), navigate to `C:\Users\<user account running the install>\AppData\Local\Temp`

**NOTE:** The log is named something like `Recast_Management_Server_2022*****.log`