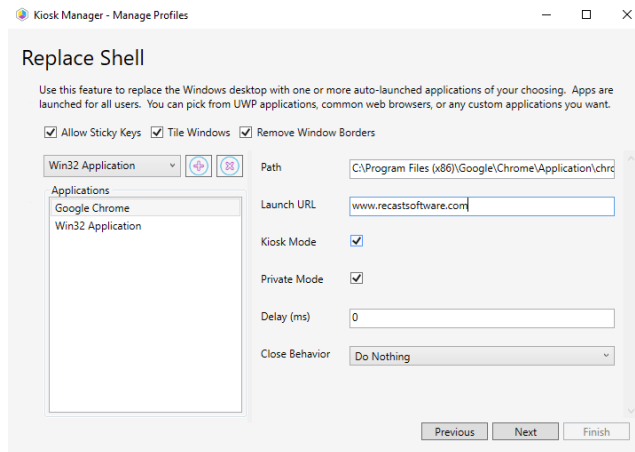


Shell Replacement

Last Modified on 07.07.23

Shell Replacement replaces the Windows desktop with one or more auto-launched applications. Applications are launched for all users. You can pick from UWP applications, common web browsers, or any custom applications you want. This feature also includes options to **Allow Sticky Keys**, **Launch Windows Explorer**, **Tile Windows**, and **Remove Window Borders**.



To set up shell replacement:

1. Select an application from the drop-down list.
2. Click the Add (+) button to add the selection to the **Applications** list.
3. If not already highlighted, click the application name in the list.
4. Set the following parameters, which will differ according to the selected application:

Browser & Application parameters

- **Path:** This field is populated from the Applications list
- **Launch URL:** For a browser, you can enter a specific URL to launch
- **Kiosk Mode:** Launch the browser in a full screen kiosk mode (Kiosk Mode is not supported by Firefox)
- **Private Mode:** Deletes the cache so that no user state is saved from the browsing session
- **Arguments:** For Win32 applications
- **Application Base Name:** For UWP applications
- **User Model:** For UWP applications
- **Delay:** Delay the shell launch by a set amount of time (in ms). Useful for scenarios where the shell needs to wait for network connectivity before it launches.
- **Window Style:** Choose from **Normal**, **Maximized**, **Minimized** and **Hidden**
- **Close Behavior:** Default behavior is to **Do Nothing**. You can also choose to **Relaunch**, **Restart Computer**, or **Shut Down Computer**.

