


Determine Devices Routed via Fast Channel

Last Modified on 01.03.23

To find out which devices can be routed to via the Fast Channel:

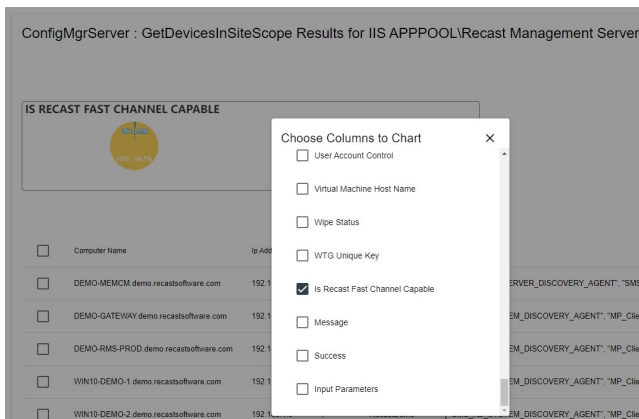
1. In the **Audit Log**, click on the **GetDevicesInCollectionScope** or **GetDevicesInSiteScope** actions.

Audit Log

Search	Start Date 2021/12/31	End Date 2022/01/08	
1/7/2022 1:40:58 PM	IIS APPPOOL\Recast Management Server	ConfigMgrServer	GetDevicesInSiteScope 00:00:05.7
			 PROXIES

2. Click the **View Results** icon to the left of the **Proxies** button.

3. In the window that opens, select **Chart** and **Is Recast Fast Channel Capable**.



NOTE: If you're not seeing expected device displayed as **Is Recast Fast Channel Capable**, make sure any hardware inventory cycle has completed after installing an agent and that your scopes have been repopulated.