

Configuration Manager Setup

Last Modified on 08.08.25

Before installing Application Manager Legacy, you'll need to set up the following in your Configuration Manager environment:

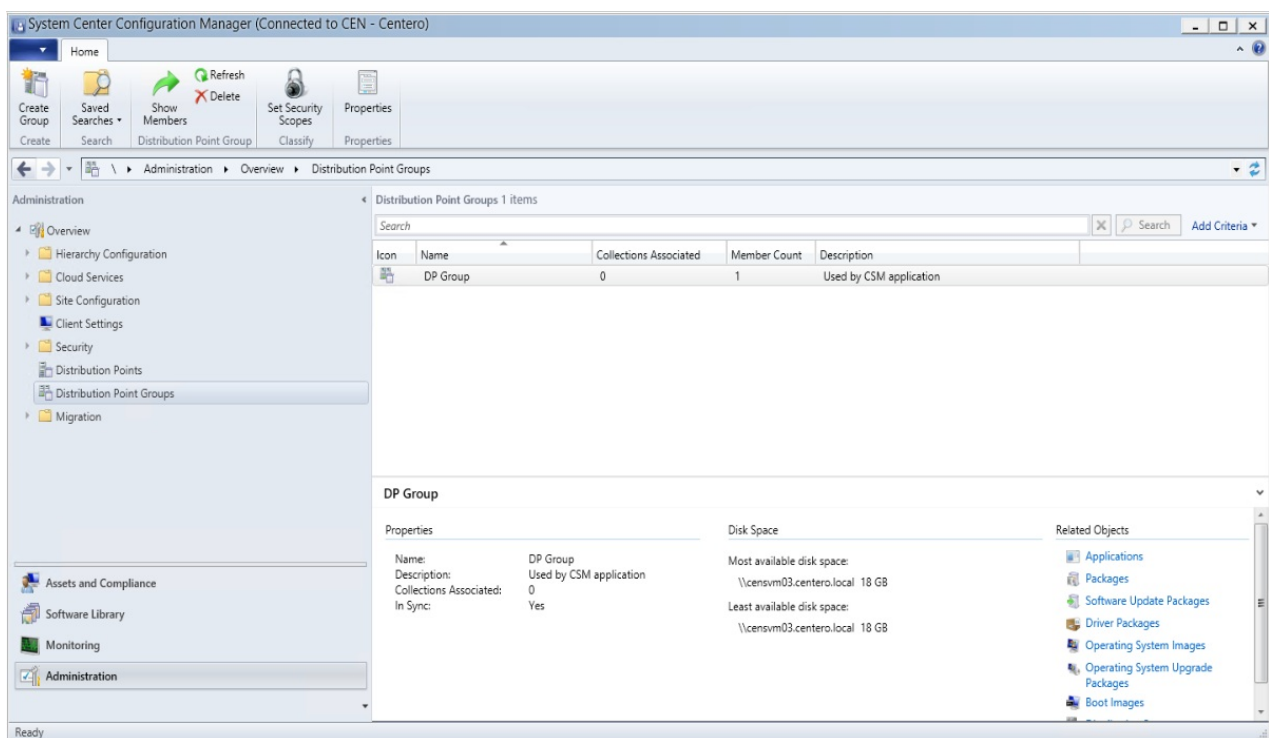
- [Distribution Point Groups](#)
- [Collections](#)
- [Application Root Folder](#)

Set Up Distribution Point Groups

Application Manager targets application content to distribution point groups. You must have or create at least one distribution point group in Configuration Manager before installing Application Manager. You might want to include all distribution points in your distribution point group, but in larger environments it's possible to include only distribution points used for application media distribution. You can use existing distribution point groups in Application Manager.

To create a new distribution point group:

1. In your Configuration Manager console, navigate to **Administration > Distribution Point Groups**.
2. In the upper left-hand corner, click **Create Group**.



The screenshot shows the System Center Configuration Manager console. The left-hand pane displays the 'Administration' tree with 'Distribution Point Groups' selected. The main pane shows a table of 'Distribution Point Groups 1 items'.

Icon	Name	Collections Associated	Member Count	Description
	DP Group	0	1	Used by CSM application

Below the table, the 'DP Group' properties are displayed:

- Properties:**
 - Name: DP Group
 - Description: Used by CSM application
 - Collections Associated: 0
 - In Sync: Yes
- Disk Space:**
 - Most available disk space: \\censvm03.centero.local 18 GB
 - Least available disk space: \\censvm03.centero.local 18 GB
- Related Objects:**
 - Applications
 - Packages
 - Software Update Packages
 - Driver Packages
 - Operating System Images
 - Operating System Upgrade Packages
 - Boot Images

3. In the window that opens, specify a **Name** for the distribution point group.

4. On the **Members** tab, select the distribution points where content should be distributed by Configuration Manager when new applications are created by Application Manager and click **OK**.

Set Up Collections

Device and user collections are used as a deployment target in Application Manager's deployment processes. You can create collections in your Configuration Manager console by navigating to **Assets and Compliance > Device Collections** or **User collections**.

If you are using Application Manager to deploy all your selected applications to all of your devices, which is most common, you only need two collections — Pilot & Production.

Create an Application-Specific Collection

To deploy an AM-created application to only those devices containing a previous version of the application, you can create application-specific collections in Configuration Manager by using queries. After the collection is created, add it to an application-specific deployment process in Application Manager.

- In addition to deploying an application to an application-specific collection as a Required deployment, you can also create an Available deployment for the rest of your devices.
- If the newly created collection is not visible in Application Manager, click the green Refresh icon next to the **Collection name** drop-down menu.

Example:

The screenshot shows the Configuration Manager console with the 'Production - Firefox ESR' collection selected. The 'Deployment settings' tab is active, showing the collection name, type, purpose, and notification settings. The 'Scheduling' section is also visible, showing deployment availability and force installation options.

Collection	Available (simulated)	Required (simulated)
Pilot - IT Devices	thu 16.11. 09:32	thu 16.11. 09:32
Production - Firefox ESR	thu 23.11. 09:32	thu 23.11. 09:32
All Users	thu 23.11. 09:32	-

Deployment settings

Collection name: Production - Firefox ESR (with refresh icon)

Collection type: Device

Deploy purpose: Required

User notification: Display in software center only

Comment:

Scheduling

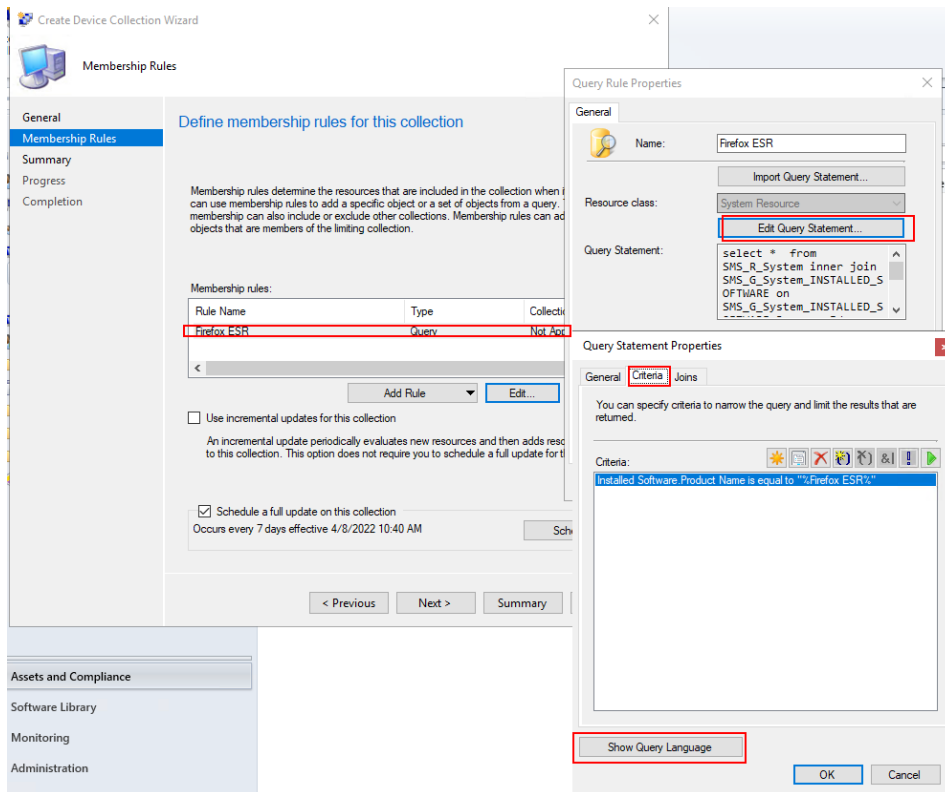
Make deployment available: ☐ Immediately ☒ after 5 working days on any working day at any time

And force installation: ☒ Immediately ☐ after working days on at

To configure an application-specific query for a collection:

1. On the **Membership Rules** page in the device or user collections wizard, add a query rule to a collection.
2. Under Query Rule Properties, click **Edit Query Statement**.
3. On the **Criteria** tab, add new criteria and select **Installed Software > Product Name**. Add the application name to the

Value field with percentage symbols around it (%APPLICATION%).



Example queries for application-specific collections

You can also use our example queries as listed below. Add a WQL query by selecting **Show Query Language** in the **Query Statement Properties** window.

TIP: You can determine an application's exact product name in your Configuration Manager console by selecting a device with the application installed and going to **Resource Explorer > Installed Software**.

Mozilla Firefox

```
select * from SMS_R_System inner join SMS_G_System_INSTALLED_SOFTWARE on SMS_G_System_INSTALLED_SOFTWARE.ResourceId = SMS_R_System.ResourceId where SMS_G_System_INSTALLED_SOFTWARE.ProductName = "Firefox x64"
```

Google Chrome

```
select * from SMS_R_System inner join SMS_G_System_INSTALLED_SOFTWARE on SMS_G_System_INSTALLED_SOFTWARE.ResourceId = SMS_R_System.ResourceId where SMS_G_System_INSTALLED_SOFTWARE.ProductName = "Google Chrome (64-bit)"
```

Adobe Reader DC

```
select * from SMS_R_System inner join SMS_G_System_INSTALLED_SOFTWARE on SMS_G_System_INSTALLED_SOFTWARE.ResourceId = SMS_R_System.ResourceId where SMS_G_System_INSTALLED_SOFTWARE.ProductName = "Adobe Acrobat Reader DC (64-bit)"
```

If the product name includes a version

```
select SMS_R_System.ResourceId, SMS_R_System.ResourceType, SMS_R_System.Name, SMS_R_System.SMSUniqueId, SMS_R_System.ResourceDomainORWorkgroup, SMS_R_System.Client from SMS_R_System inner join SMS_G_System_INSTALLED_SOFTWARE on SMS_G_System_INSTALLED_SOFTWARE.ResourceID = SMS_R_System.ResourceId where SMS_G_System_INSTALLED_SOFTWARE.ProductName like "<product name>%"
```

Set Up An Application Root Folder

Application Manager will create a folder structure for Configuration Manager in **Software Library > Application Management > Applications**. You can specify the root folder name that will be created under **Applications**. All applications added by AM will be created under this root folder with the following structure: Publisher > Application name. By default, the root folder name is **Application Manager**, but you can change this in the [deployment process settings](#).