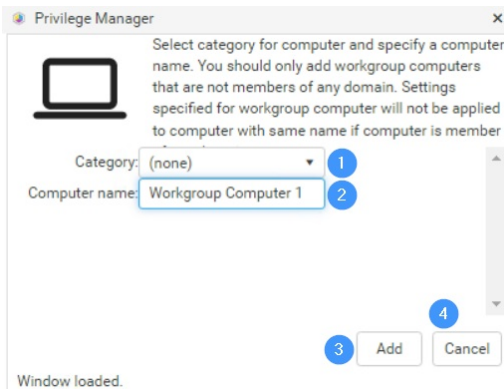


Create a Workgroup Computer

Creating a new workgroup computer allows you to create management rules for individual workgroup computers.



To create a new workgroup computer:

1. Select the **Category** in which the workgroup computer will be created and shown. The category does not affect the workgroup computer usage, category selection is purely for organizing workgroup computers to make it easier to find when creating management rules.
2. Enter a unique workgroup **Computer name**.
3. Click **Add**.