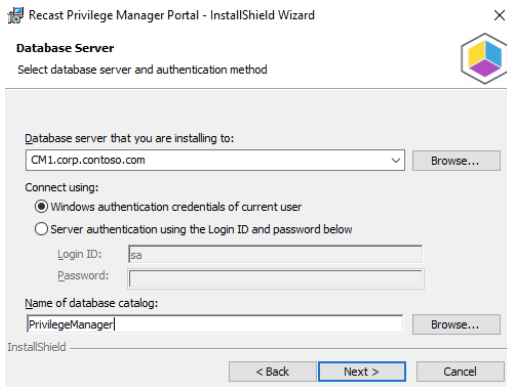


Database

On the **Database Server** page, you can specify where the Privilege Manager database will be created or used.

If the database does not already exist on the specified Microsoft SQL Server instance, the user account running the installation program must have permissions to create a new database on the SQL Server instance. If the database already exists on the specified Microsoft SQL Server instance, db_owner permissions are required on the existing database for the user account running the installation program.



To create the database:

1. Enter or browse to the Microsoft SQL Server instance where the database should be located. If using the default instance on Microsoft SQL Server, only the server name should be used. If using a named instance on Microsoft SQL Server, the instance name must also be specified. The alternative for specifying a named instance is to specify the server name and TCP/IP port where Microsoft SQL Server instance is listening, separated by a comma (for example: sql.server.com|, 4252)
2. Select an authentication method. By default, the Privilege Manager Portal application is run with Network Service credentials. Therefore, when using Windows authentication for Microsoft SQL Server, the Active Directory computer object where Privilege Manager Portal is being installed is used for authentication. If Microsoft SQL Server authentication is selected, enter SQL **Login ID** and **Password** details.
3. Enter or browse to the database name that will be used for Privilege Manager.