

Shutdown Collection — Console Tool on Collection

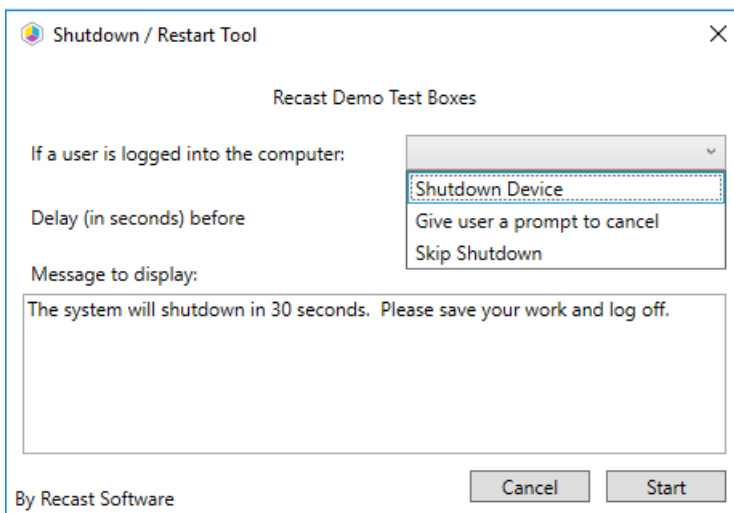
Last Modified on 12.05.22

The **Shutdown Collection** tool initiates a shutdown of the selected collection.

This tool can be run on a device collection, or with a [similar tool designed to run on single and multi-selected devices](#).

To run the tool:

1. In your Configuration Manager console, right-click on a device collection.
2. Click **Right Click Tools > Console Tools on Collection > Shutdown Collection**.
3. In the **Shutdown / Restart Tool** window, choose to **Shutdown Device**, **Give user a prompt to cancel**, or **Skip Shutdown** when a user is logged in while attempting the shutdown action.
4. Set a **Delay (in seconds) before** shutdown.
5. Customize the **Message to display** prior to shutdown (optional).



6. Click **Start** to initiate shutdown sequence.

Recast Permissions

SystemInformation	ShutdownComputer
-------------------	------------------

Microsoft Permissions

- This action requires Administrative access on the target computers.