

Ping Collection — Console Tool on Collection

Last Modified on 05.06.25

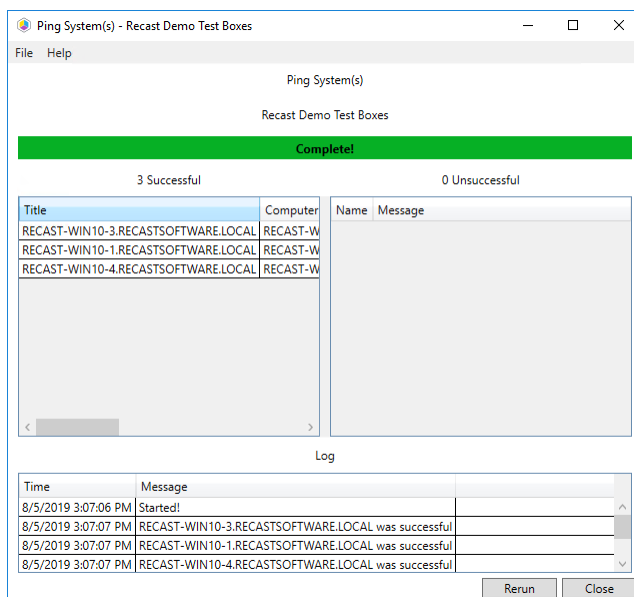
The **Ping System(s)** tool sends an ICMP Echo request.

This tool can be run on a device collection, or with a [similar tool designed to run on single and multi-selected devices](#).

To run this tool:

1. Right-click on a device collection.
2. Select **Right Click Tools** > **Console Tools on Collection** > **Ping Collection**.

The window that opens displays progress and completion according to success.



Recast Permissions

Network plugin	PingComputer permission
----------------	-------------------------

Microsoft Permissions

- Requires ICMP echo be allowed through the firewall.