

Software Updates Deployment Evaluation Cycle — Client Action on Collection

Last Modified on 12.22.25

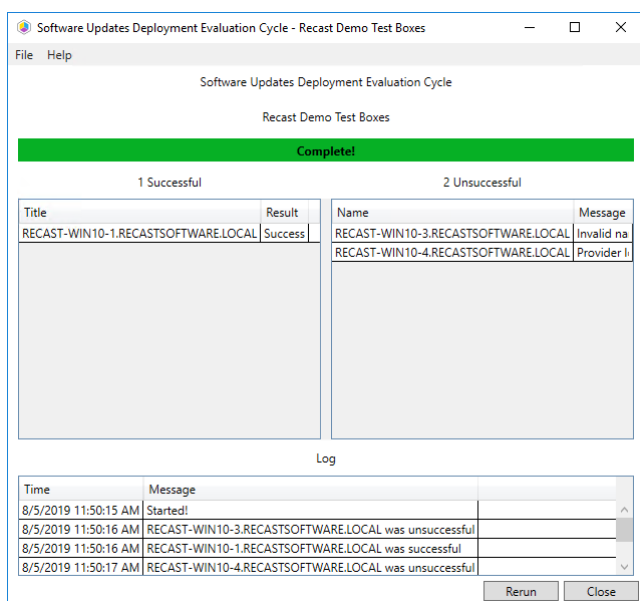
The **Software Updates Deployment Evaluation Cycle** initiates a scan of software updates compliance. Before client computers can scan for software update compliance, the software updates environment must be configured.

This action can be run on device collections, or using [asimilar tool designed for single and multi-selected devices](#)

To run this tool:

1. Right-click on a device collection.
2. Select **Right Click Tools > Client Actions on Collection > Software Updates Deployment Evaluation Cycle**.

The window that opens displays progress and successful completion.



Recast Permissions

Plugin	Permissions
ConfigMgrClient	SoftwareUpdatesDeploymentEvaluationCycle

Microsoft Permissions

- Requires that the target device has a working ConfigMgr client installed.
- Requires that the user running the ConfigMgr console has administrative access to the remote device.
- [Remote WMI](#) ports must be allowed through the firewall.
- If the 'Ping Computer Before Running Tools' option is set, [ICMP Echo](#) must be allowed through the firewall.
- If using a Recast Management Server with a proxy, the service account will need administrator permissions on the remote device.

One way around some of the permissions requirements and firewall rules is installing [aRecast Agent](#).

