



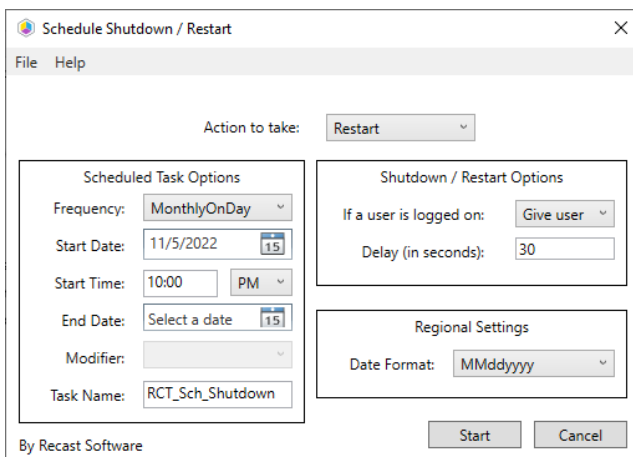
# Schedule Restart or Shutdown

Last Modified on 11.26.24

The **Schedule Restart or Shutdown** tool creates a scheduled task in Windows Task Scheduler to shut down or restart a device at a set time.

To run the tool:

1. In your Configuration Manager console, right-click on a device.
2. Click **Right Click Tools > Console Tools > Schedule Restart or Shutdown**.
3. In the **Schedule Shutdown / Restart** window, set options including the **Frequency**, **Start Date** and **Time**.
4. Set a delay in seconds before shutdown or restart for users who are logged on.
5. Click **Start**.



## Recast Permissions

SystemInformation plugin	ScheduleShutdown permission
--------------------------	-----------------------------

## Microsoft Permissions

- Requires local administrator permissions on the remote devices.
- If using Recast Management Server with a service account, the service account will need local administrator permissions on the remote device.
- This action uses [remote WMI](#).

This tool will copy an executable to C:\Windows on remote devices when the 'Give user a prompt to cancel option' is selected. Some antivirus vendors may block the execution of this application.