

Recast

Ping System(s)

Last Modified on 01.06.26

The **Ping System(s)** tool sends an ICMP Echo request. This tool can be run on single devices and multi-selected devices.

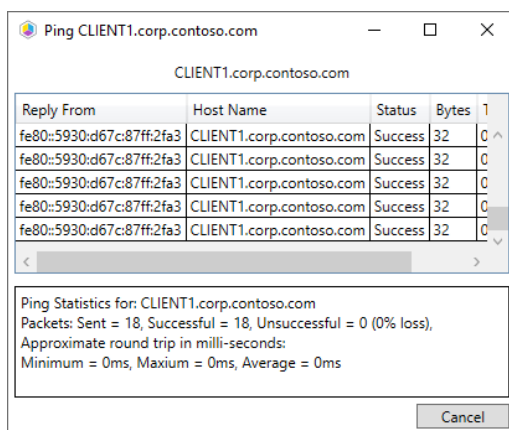


The system (rather than the route type used to run the action) determines whether the Ping System(s) action returns an IPv6 or an IPv4 address.

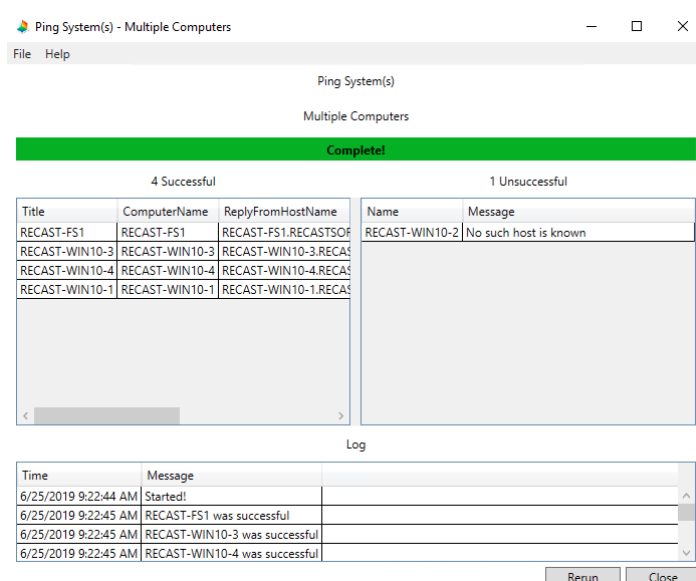
To run the tool:

1. Right-click on a device.
2. Select **Right Click Tools > Console Tools > Ping System(s)**.

Running the action on a single device opens the following window:



Running the action on multiple devices opens the **Multiple Computers** window:



Recast Permissions

Plugin

Permissions

Recast

Plugin	Permissions
Network	PingComputer

Microsoft Permissions

- Requires [ICMP Echo](#) be allowed through the firewall.
-