



Add Users to Collection(s)

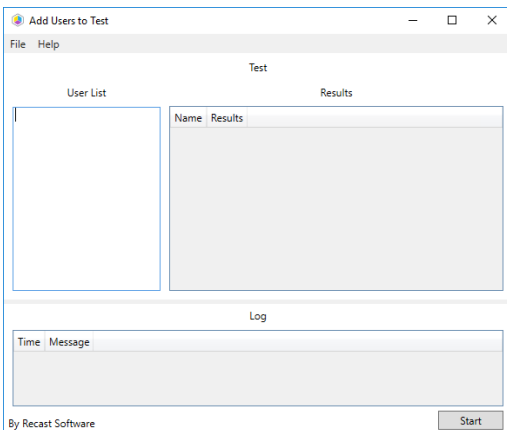
Last Modified on 11.27.24

The **Add Users to Collection(s)** tool allows administrators to add existing users to an existing collection.

To add users to collections:

1. In your Configuration Manager console navigation panel, click **Users**.
2. Right-click on a user collection.
3. Click **Right Click Tools > Add Users to Collection(s)**.
4. In the window that opens, add users to the **User List** and click **Start**.

The **Results** section will display any actions taken. The **Log** section will update the status.



TIP: If you are having trouble adding users to collections, you can also add them using `domain\username` (two slashes) or `%username` .

Recast Permissions

ConfigMgrServer plugin

AddUserstoCollection permission

Microsoft Permissions

Requires modify permission on Collection in Configuration Manager.

