



Install Endpoint Insights with Recast Management Server

Last Modified on 06.18.24

Installing Endpoint Insights with [Recast Management Server and Recast Proxy](#) allows you to collect the warranty data that populates EI's [device warranty reports](#).

Endpoint Insights must be installed on your Configuration Manager server after you've [installed Recast Management Server with Recast Proxy](#). See the [Endpoint Insights Implementation Workflow](#) for an overview of deployment and configuration steps.

During installation, Endpoint Insights completes the following tasks:

- Imports SQL Server Reporting Services (SSRS) reports, Power BI Report Server (PBRS) report sets, and Power BI desktop report sets
- Imports client settings to extend the hardware inventory
- Creates a Configuration Manager application for Recast Agent
- Via Configuration Manager methods (API), creates warranty details to allow the warranty date to be stored in the ConfigMgr database

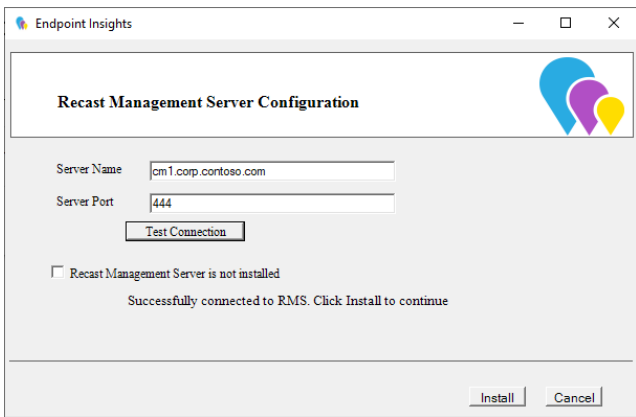
Prerequisites

- For a remote SSRS/PBRS reporting point, the Configuration Manager Primary Site Server's computer account requires SysAdmin permissions on each remote database during the installation. These permissions can be removed after Endpoint Insights is installed.
- We recommend setting a static port on the remote SSRS/PBRS servers. If there are multiple reporting points, configure them all to use the same port, as only a single port can be defined during installation.

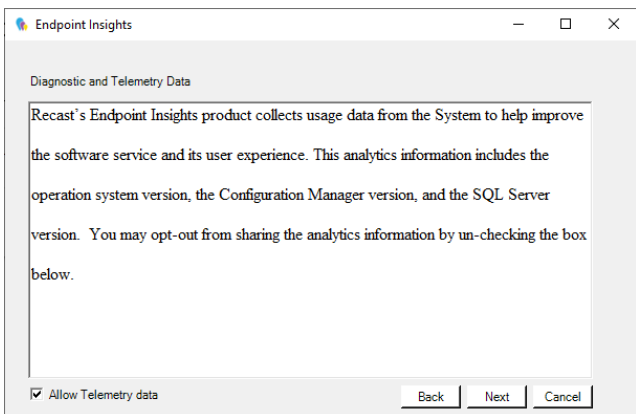
Run the Endpoint Insights Installer

To install Endpoint Insights:

1. [Download](#) and run the Endpoint Insights installer.
2. Under **Recast Management Server Configuration**, enter the **Server Name** and **Server Port**.
3. Click **Test Connection**. When connected, click **Next**.
4. Make sure **Recast Management Server is not installed** remains unchecked.
5. Click **Install**.



6. Enable **Allow Telemetry data** to allow the collection of the operating system version, the ConfigMgr version, and the SQL Server version during Endpoint Insights Setup (optional). Click **Next**.

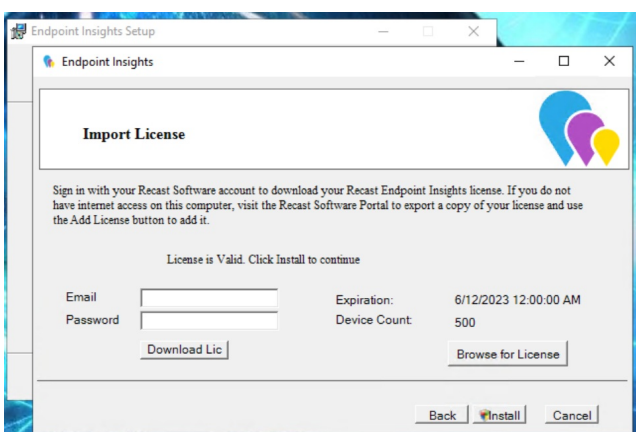


NOTE: Once Endpoint Insights Setup is complete, EI does not continue to collect usage data.

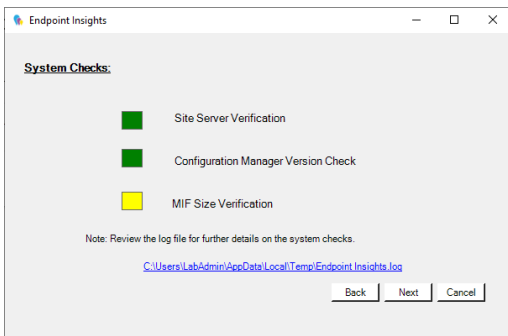
7. On the **Import License** page, enter your Recast Portal credentials, or browse to a previously downloaded license file.

NOTE: The **Import License** page will not appear if licensing was configured during [Recast Management Server installation](#).

8. Click **Install**.



The Endpoint Insights System Checks will run and report any issues with installing Endpoint Insights in your environment.

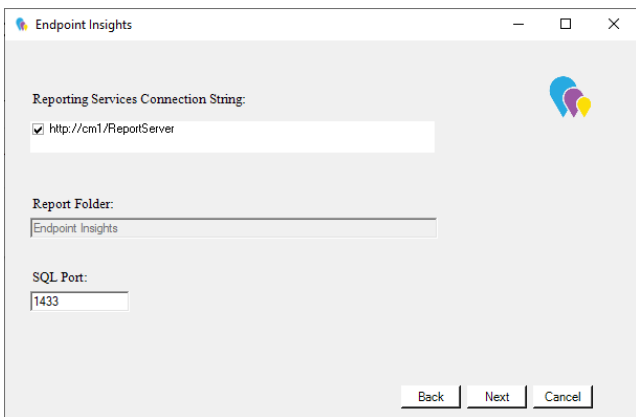


If MIF Size displays as an issue, you can increase the MIF size. To learn more, see [Change the Maximum File Size of a MIF](#).

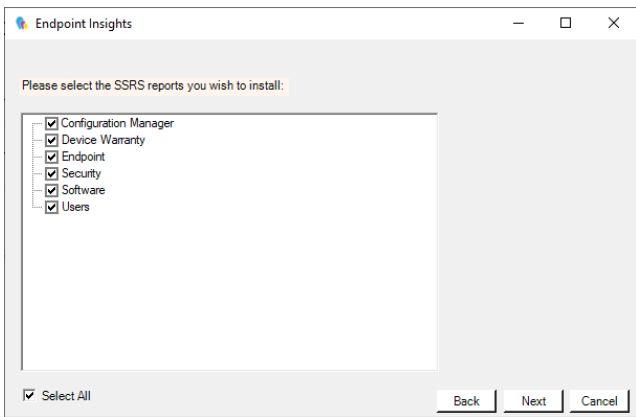
9. On the options page, you can set the following Endpoint Insight options.

- Select **Configure hardware inventory to import ER settings** to upgrade from Enhansoft Reporting to Recast Endpoint Insights.
- Select **Create Application** to automatically create the Recast Agent application in Configuration Manager.
- Select **Create Reports** to create the reports that display data collected by Endpoint Insights.
- De-select **Do not create RBA reports** only if your organization does not require role-based access on the Endpoint Insights reports.
- Enter a **SSRS Reader Group** to give an Active Directory group access to read SSRS reports.
 - To leave the SSRS Reader Group field blank, click **No** when prompted.
 - You can add the SSRS Reader Group later by re-running the EI setup.

10. Verify that the **Reporting Services Connection String**, **Report Folder** and **SQL Port** are correct for your environment. Click **Next**.



11. De-select any report categories to exclude from this installation. Click **Next**.



When setup completes, [configure Asset Intelligence](#) in your Configuration Manager to ensure that all data is returned to Endpoint Insights.

NOTE: Once Recast Management Server and Endpoint Insights are installed, you may be tempted to kick off an Endpoint Insights warranty scan on the RMS **Warranty** page. Because Endpoint Insights relies on Recast Agent and Configuration Manager hardware inventory, you'll need to wait for [Recast Agent](#) software to be deployed to your end clients and for the next hardware inventory cycle to return inventory. The default hardware inventory setting within Configuration Manager is 7 days. It's recommended to reduce that to daily. For additional information, see [ConfigMgr Inventory Cycle Recommendations](#).