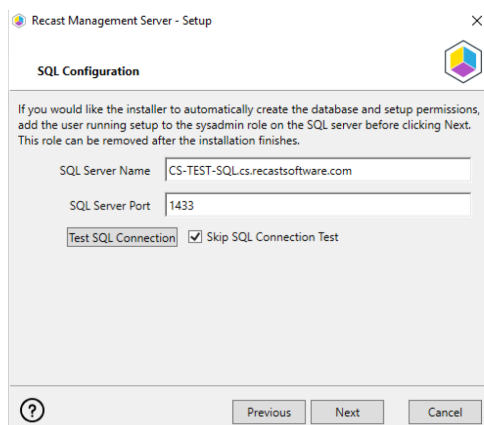


# Manually Configure SQL Server Permissions

Last Modified on 11.17.23

There are two types of permissions that will allow the Recast Management Server installer to automatically create the SQL database with all the necessary permissions:

- The user account running the installation can be assigned a SysAdmin role in the SQL instance. If the user account has permission to connect remotely, use the **Test SQL Connection** button to check connectivity to the SQL Server during the install. After the RMS installer creates the database, the SysAdmin permission can be removed.
- The computer account of the Recast Management Server can be granted **db\_creator** permissions. In this case, check the **Skip SQL Connection Test** box on the installer's **SQL Configuration** page.



## Pre-create the RecastManagementServer Database

If the account running the Recast Management Server installer does not have permission to create a SQL database, the database administrator can pre-create a database named **RecastManagementServer** and assign permissions manually.

**Remote SQL Server:** Where the database is remote from the Recast Management Server, assign **db\_owner** permissions on the database to the **computer account** of the Recast Management Server.

**Local SQL Server:** Where the database is local to the Recast Management Server, assign **db\_owner** permissions on the database to the **IIS AppPool\Recast Management Server** account.

**NOTE:** The IIS AppPool\Recast Management Server account will not exist until after the installation is finished, so db\_owner permissions will need to be assigned after installation.

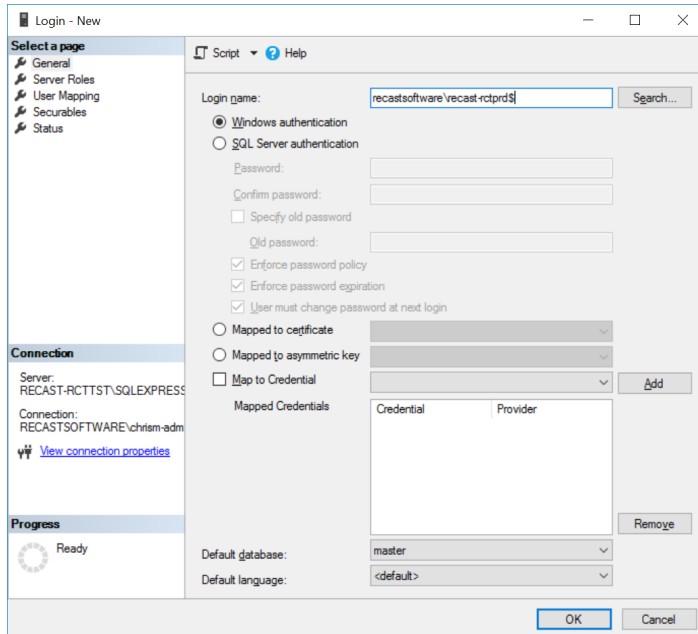
## Add the Computer Account via SSMS

If the computer account for the Recast Management Server computer does not exist in SQL, users will need to add the computer account manually, as a Login Account in SQL Server Management Studio (SSMS).

# Add the Computer Account as a Login Account

To create the computer account as a login account:

1. Open SSMS and expand the folder of the server instance in which you want to create the new login.
2. Right-click on the Security folder, point to New and select Login.
3. In the **Login - New** window, on the **General** page, enter the Login name of the account in the following format: **<domain name>\<computer name>\$**. Including the dollar sign (\$) treats the login name as a computer account rather than a user account.



4. On the **User Mapping** page, in the **Users mapped to this login** section, select **RecastManagementServer**.
5. In the **Database role membership** section, select **db\_owner**.